

11mm Size Insulated Shaft Snap-in Type RK11K Series

- [Photo](#) |
 [Dimensions](#) |
 [Mounting Hole Dimensions](#) |
 [Terminal Layout / Circuit Diagram](#) |
 [Packing Specifications](#) |
 [Soldering Conditions](#)

PRINT

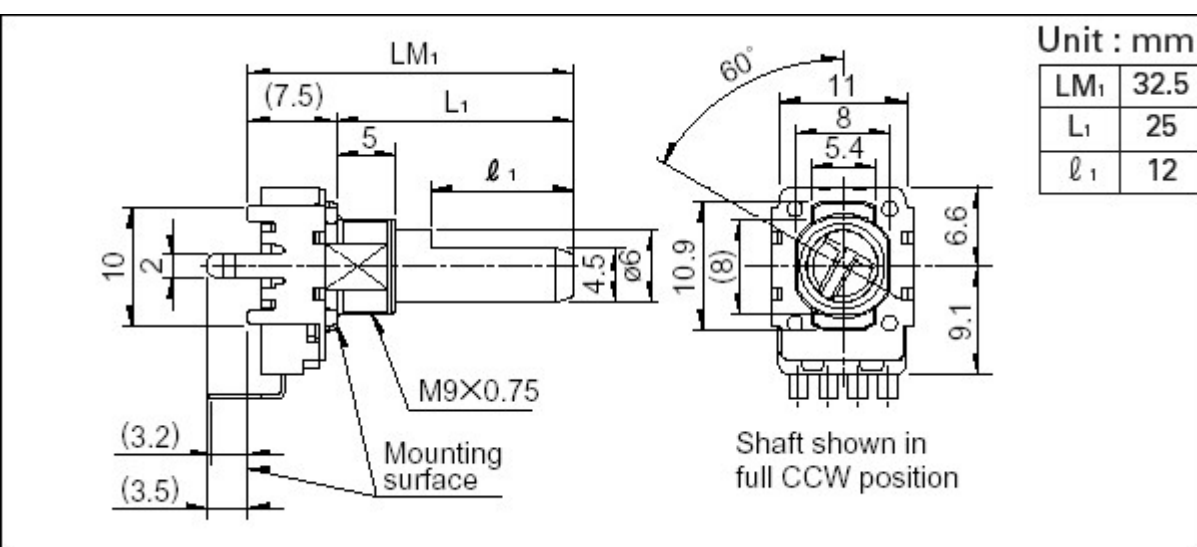
Part number	RK11K1140A2S	
Number of resistor elements	Single-unit (20V DC)	
Mounting direction	Vertical type	
Bushing	With	
Shaft types	Flat	
Length of the shaft LM1	32.5mm	
Center detent	Without	
Total resistance	10kΩ	
Resistance taper	1B	
Operating temperature range	-10℃ to +70℃	
Electrical Performance	Total resistance tolerance	±20%
	Rated power	0.05W
	Maximum operating voltage	50V AC, 20V DC
	Insulation resistance	100MΩ min. 500V DC
	Voltage proof	500V AC for 1 minute
Mechanical Performance	Total rotational angle	300°±5°
	Rotational torque	3 to 20mN·m
	Stopper strength	0.6N·m
	Push-pull strength	80N max.
	Vibration	10 to 55 to 10Hz/min., the amplitude is 1.5mm for all the frequencies, in the 3 direction of X, Y and Z and for 2 hours respectively
Durability	Operating life	15,000 cycles
Minimum order unit (pcs.)	Japan	800
	Export	1,600



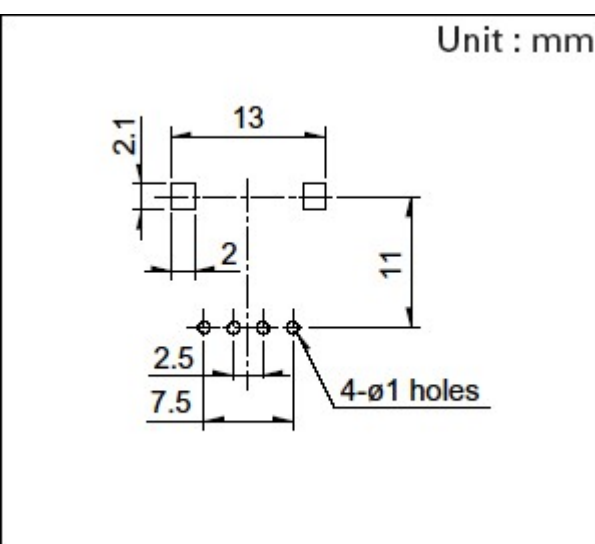
Photo



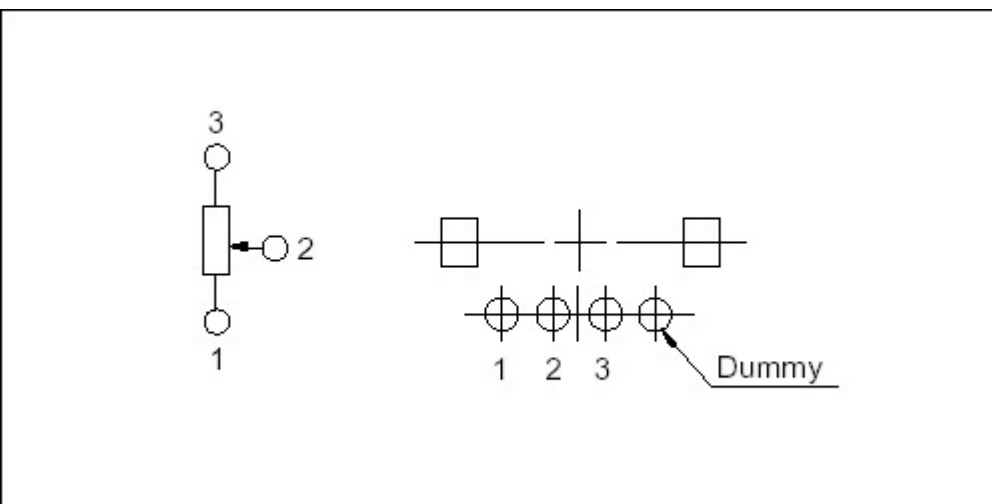
Dimensions



Mounting Hole Dimensions



Terminal Layout / Circuit Diagram



Packing Specifications

Tray

Number of packages (pcs.)	1 case / Japan	800
	1 case / export packing	1,600
Export package measurements (mm)		374×532×240

Soldering Conditions

Reference for Hand Soldering

Tip temperature	350℃ max.
Soldering time	3s max.
No. of solders	1 time

Notes are common to this series/models.

1. This site catalog shows only outline specifications. When using the products, please obtain formal specifications for supply.
2. Please place purchase orders per minimum order unit (integer).
3. Products other than those listed in above products are also available. Please contact us for details.
4. Nut and washer are not attached. Please specify if required.

Inquiries about Products

[!\[\]\(0d5ec72f61334709c3fc9450209b754f_img.jpg\) Inquiry](#)