

9mm Size Metal Shaft Multi-ganged Type RK097 Series

[Photo](#) |
 [Dimensions](#) |
 [Mounting Hole Dimensions](#) |
 [Dimensions of Terminal](#) |
 [Dimensions of Bushings](#) |
 [Attached Parts](#) |
 [Packing Specifications](#) |
 [Soldering Conditions](#) |

PRINT

Single-shaft without switch type

Part number	RK09712200MY	
Number of resistor elements	Dual-unit	
Mounting direction	Horizontal type	
Fixing method of bushing	Screw	
Shaft types	Flat	
Length of the shaft	15mm	
Center detent	Without	
Total resistance	10kΩ	
Resistance taper	3B	
Operating temperature range	-20 to +70	
Electrical Performance	Total resistance tolerance	±20%
	Rated power	0.05W
	Maximum operating voltage	50V AC, 10V DC
	Residual resistance	20Ω max.
	Gang error	-40dB to 0dB 3dB max.
	Insulation resistance	100MΩ min. 250V DC
	Voltage proof	300V AC for 1 minute
Mechanical Performance	Total rotational angle	300°±5°
	Rotational torque	2 to 25mN·m
	Stopper strength	0.5N·m
	Push-pull strength	100N max.
	Vibration	10 to 55 to 10Hz/min., the amplitude is 1.5mm for all the frequencies, in the 3 direction of X, Y and Z and for 2 hours respectively
Durability	Operating life	15,000 cycles

Minimum order unit (pcs.)	Japan	1,200
	Export	2,400

3D CAD (STEP) [↓](#)

Certificate of Compliance to RoHS regulations [↓](#)

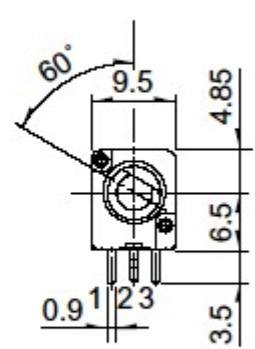
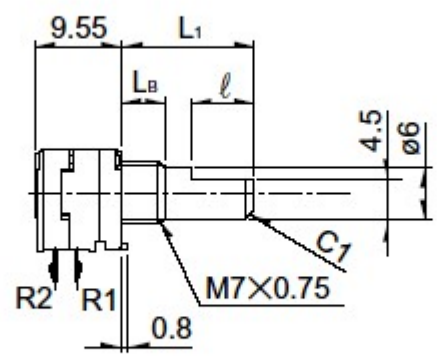
Photo



Dimensions

L ₁	15
L _B	5
ℓ	7

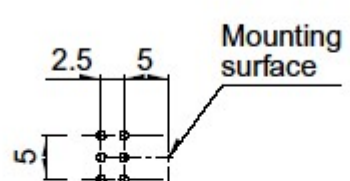
Unit : mm



Shaft shown in full CCW position

Mounting Hole Dimensions

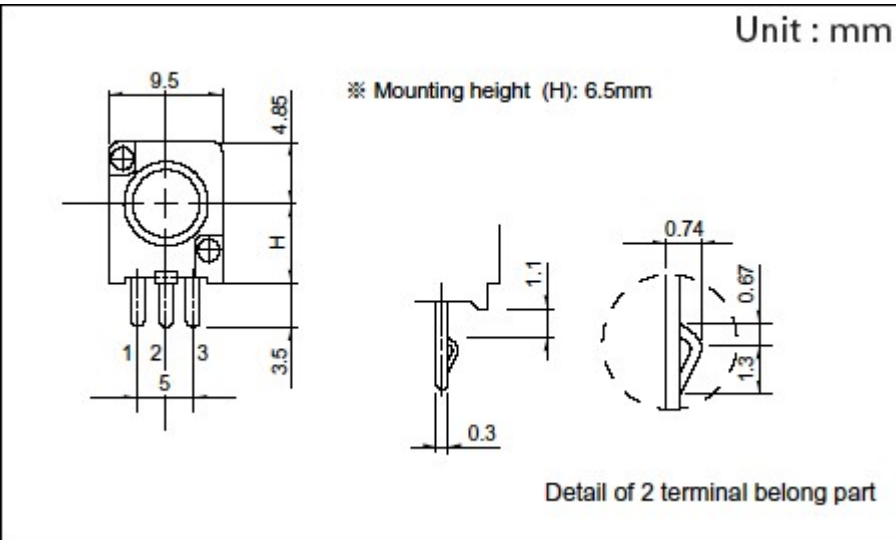
Unit : mm



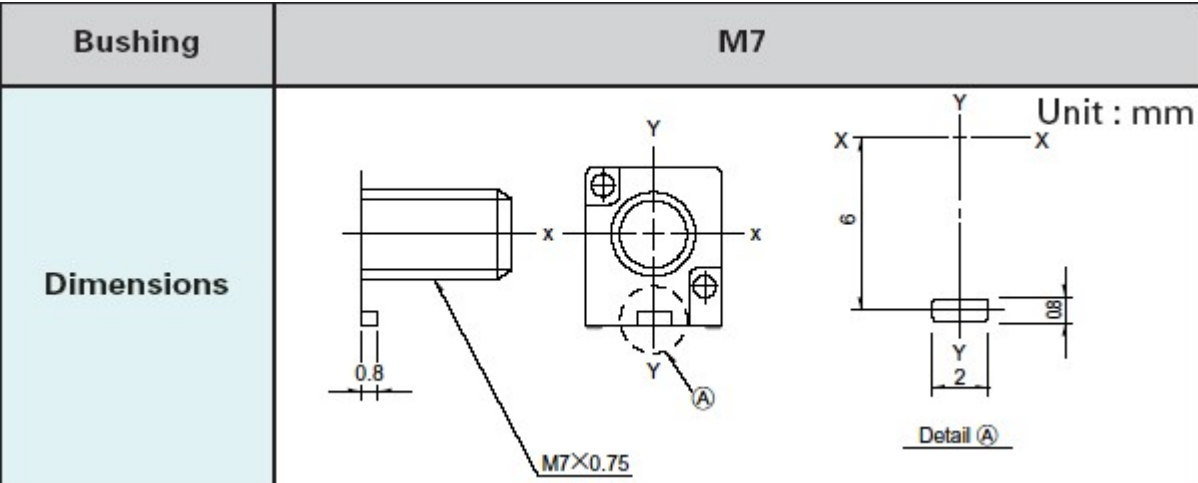
6- ϕ 1 holes

Viewed from mounting side.

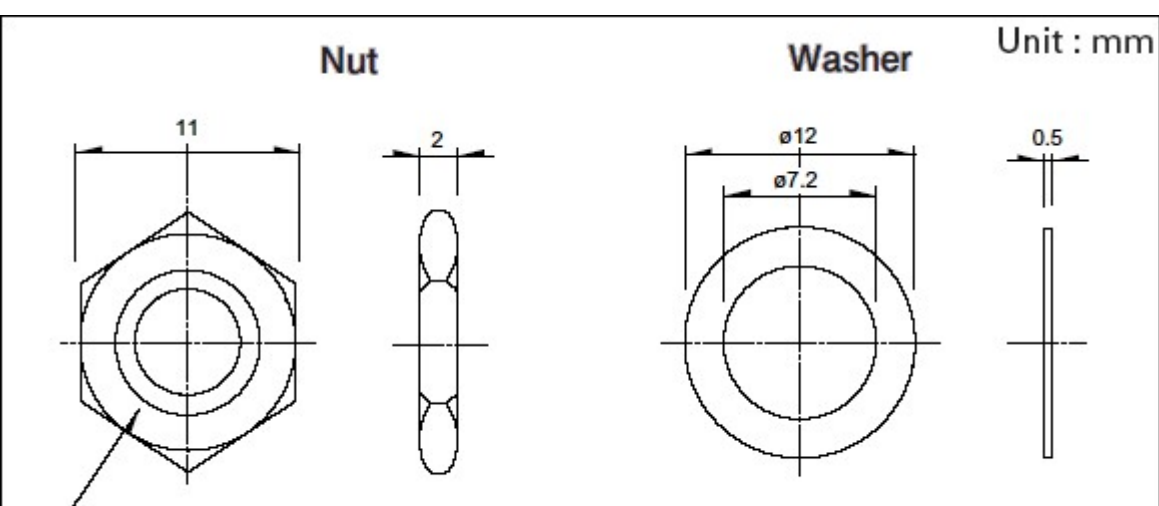
Dimensions of Terminal



Dimensions of Bushings



Attached Parts



These parts are attached to the following products.

Packing Specifications

Tray

Number of packages (pcs.)	1 case / Japan	1,200
	1 case / export packing	2,400
Export package measurements (mm)	375×490×185	

Soldering Conditions

Reference for Dip Soldering

Preheating	Soldering surface temperature	100° max.
	Heating time	2 min. max.
Dip soldering	Soldering temperature	260±5° max.
	Soldering time	5±1s
No. of solders	2 time max.	

Reference for Hand Soldering

Tip temperature	350° max.
Soldering time	3s max.
No. of solders	1 time

Notes are common to this series/models.

1. This site catalog shows only outline specifications. When using the products, please obtain formal specifications for supply.
2. For the switch attached, the single-shaft or inner shaft of the dual-shaft type can be chosen.
3. Please place purchase orders per minimum order unit (integer).
4. Products other than those listed in above products are also available. Please contact us for details.
5. This products can be used in vehicles.
Although these products are designed to perform over a wide operating temperature range, please ensure that you receive and read the formal delivery specifications before use.

Inquiries about Products

 [Inquiry](#)