

9mm Size Metal Shaft Multi-ganged Type RK097 Series

- [Photo](#) | [Dimensions](#) | [Mounting Hole Dimensions](#) | [Example of Uses](#) | [Dimensions of Terminal](#) | [Dimensions of Bushings](#) | [Attached Parts](#) | [Packing Specifications](#) | [Soldering Conditions](#) |

PRINT

Single-shaft with push-lock mechanism type

Part number	RK097111T064	
Number of resistor elements	Single-unit	
Mounting direction	Horizontal type	
Fixing method of bushing	Screw	
Shaft types	Flat	
Length of the shaft	25mm	
Center detent	Without	
Total resistance	100kΩ	
Resistance taper	1B	
Operating temperature range	-20 to +70	
Electrical Performance	Total resistance tolerance	±20%
	Rated power	0.05W
	Maximum operating voltage	50V AC, 10V DC
	Residual resistance	100Ω max.
	Insulation resistance	100MΩ min. 250V DC
	Voltage proof	300V AC for 1 minute
Mechanical Performance	Total rotational angle	300°(+10, -5)°
	Rotational torque	2 to 25mN·m
	Stopper strength	0.4N·m
	Push-pull strength	100N max.
	Vibration	10 to 55 to 10Hz/min., the amplitude is 1.5mm for all the frequencies, in the 3 direction of X, Y and Z and for 2 hours respectively
Durability	Operating life	15,000 cycles
Minimum order unit	Japan	700

3D CAD (STEP)



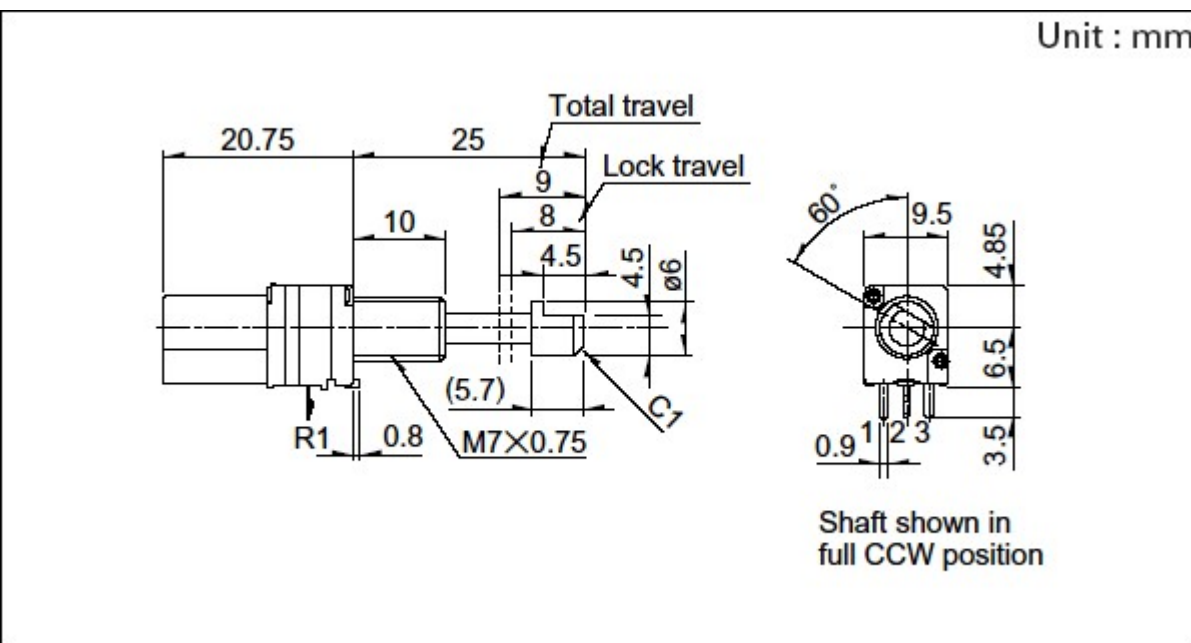
Certificate of Compliance to RoHS regulations



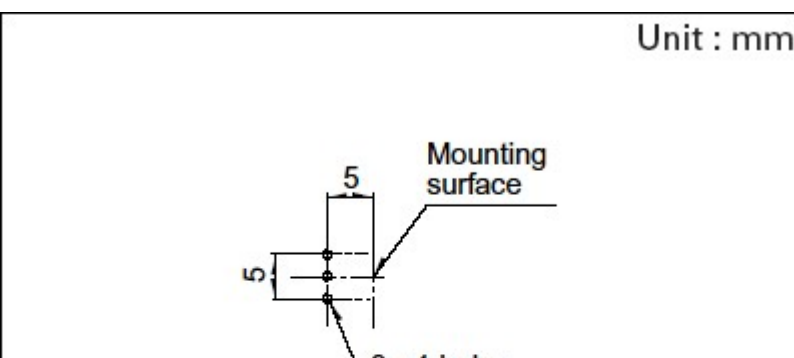
Photo



Dimensions



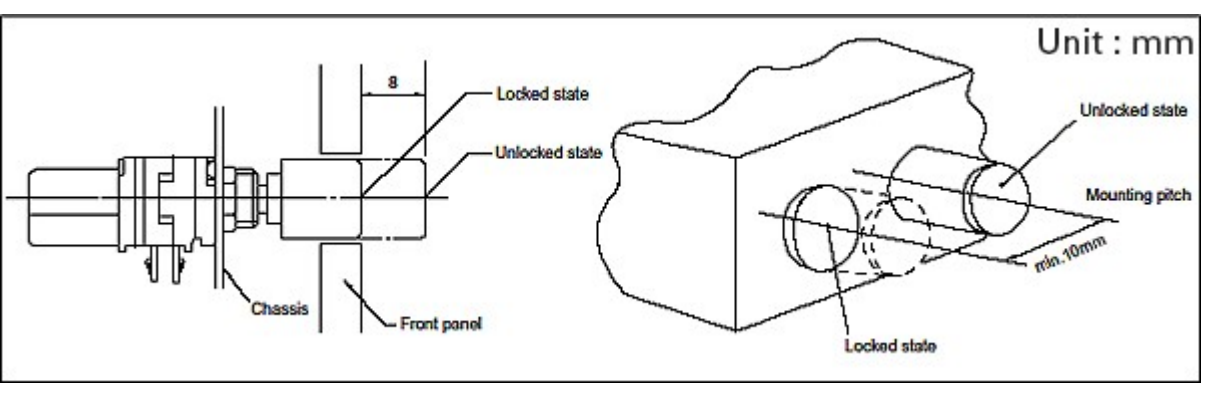
Mounting Hole Dimensions



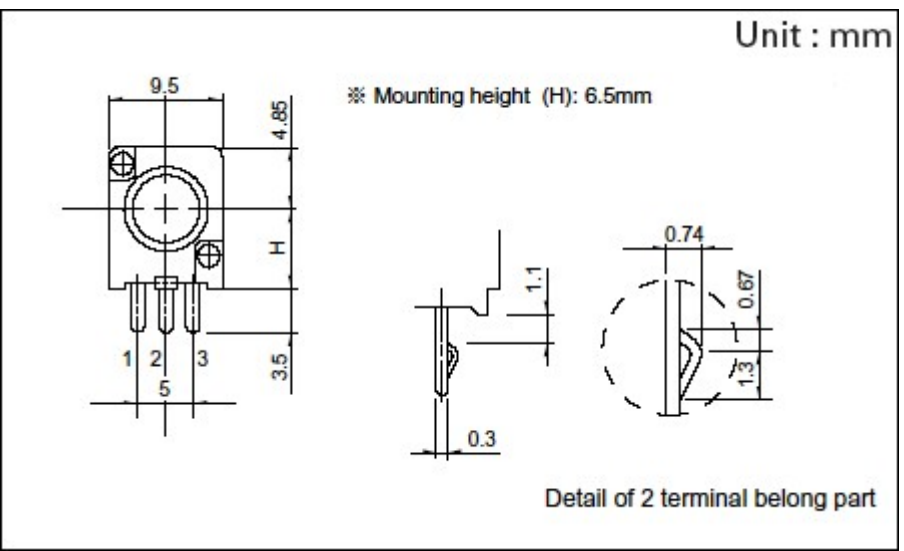
3- ϕ 1 holes

Viewed from mounting side.

Example of Uses



Dimensions of Terminal

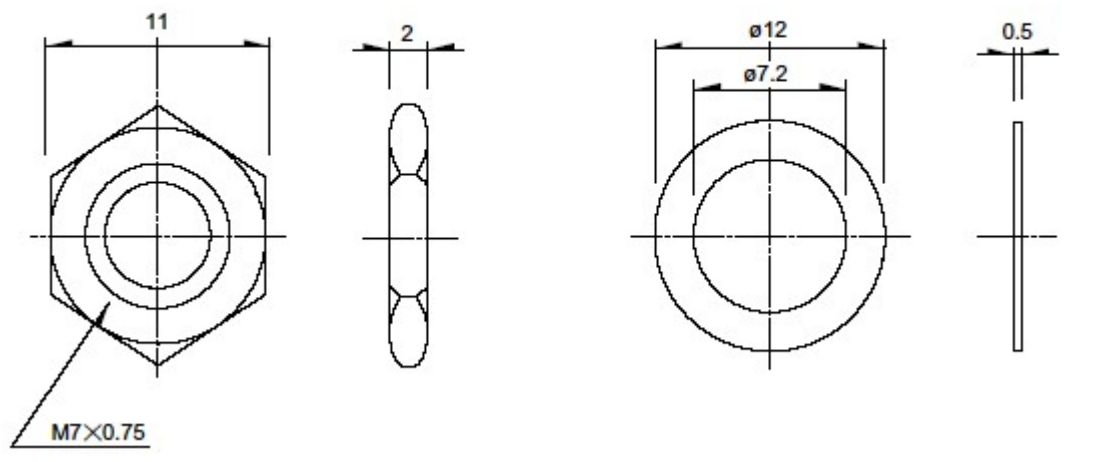


Dimensions of Bushings

Bushing	M7
<p>Dimensions</p>	

Attached Parts

Nut	Washer	Unit : mm
-----	--------	-----------



These parts are attached to the following products.

Packing Specifications

Tray

Number of packages (pcs.)	1 case / Japan	700
	1 case / export packing	1,400
Export package measurements (mm)	373×540×181	

Soldering Conditions

Reference for Dip Soldering

Preheating	Soldering surface temperature	100° max.
	Heating time	2 min. max.
Dip soldering	Soldering temperature	260±5° max.
	Soldering time	5±1s
No. of solders	2 time max.	

Reference for Hand Soldering

Tip temperature	350° max.
Soldering time	3s max.
No. of solders	1 time

Notes are common to this series/models.

1. This site catalog shows only outline specifications. When using the products, please obtain formal specifications for supply.
 2. For the switch attached, the single-shaft or inner shaft of the dual-shaft type can be chosen.
 3. Please place purchase orders per minimum order unit (integer).
 4. Products other than those listed in above products are also available. Please contact us for details.
 5. This products can be used in vehicles.
- Although these products are designed to perform over a wide operating temperature range, please ensure that you receive and read the formal delivery specifications before use.

Inquiries about Products

 [Inquiry](#)