

## 9mm Size Metal Shaft Multi-ganged Type RK097 Series

[Photo](#) | 
 [Dimensions](#) | 
 [Mounting Hole Dimensions](#) | 
 [Dimensions of Terminal](#) | 
 [Dimensions of Bushings](#) | 
 [Attached Parts](#) | 
 [Packing Specifications](#) | 
 [Soldering Conditions](#) |

PRINT

### Single-shaft push-on push-off (1.5mm travel) switc

Part number	<b>RK097111202P</b>	
Number of resistor elements	Single-unit	
Mounting direction	Horizontal type	
Fixing method of bushing	Screw	
Shaft types	Flat	
Length of the shaft	25mm	
Center detent	Without	
Total resistance	10kΩ	
Resistance taper	15A	
Operating temperature range	-20 to +70	
Electrical Performance	Total resistance tolerance	±20%
	Rated power	0.05W
	Maximum operating voltage	50V AC, 10V DC
	Residual resistance	20Ω max.
	Insulation resistance	100MΩ min. 250V DC
	Voltage proof	300V AC for 1 minute
Mechanical Performance	Total rotational angle	300°(+10, -5)°
	Rotational torque	2 to 25mN·m
	Stopper strength	0.5N·m
	Push-pull strength	100N max.
	Vibration	10 to 55 to 10Hz/min., the amplitude is 1.5mm for all the frequencies, in the 3 direction of X, Y and Z and for 2 hours respectively
Durability	Operating life	15,000 cycles
Specifications	Contact arrangement	Double pole and single throw

switches	Travel	1.5±0.5mm
	Changeover force	12±8N
	Operating life	10,000 cycles
	Ratings	3A 16V DC (10mA 16V DC min. rating)
	Contact resistance	100mΩ for initial period, 200mΩmax. after operating life.
	Insulation resistance	100MΩ min. 250V DC
	Voltage proof	300V AC for 1 minute
Minimum order unit (pcs.)	Japan	700
	Export	1,400

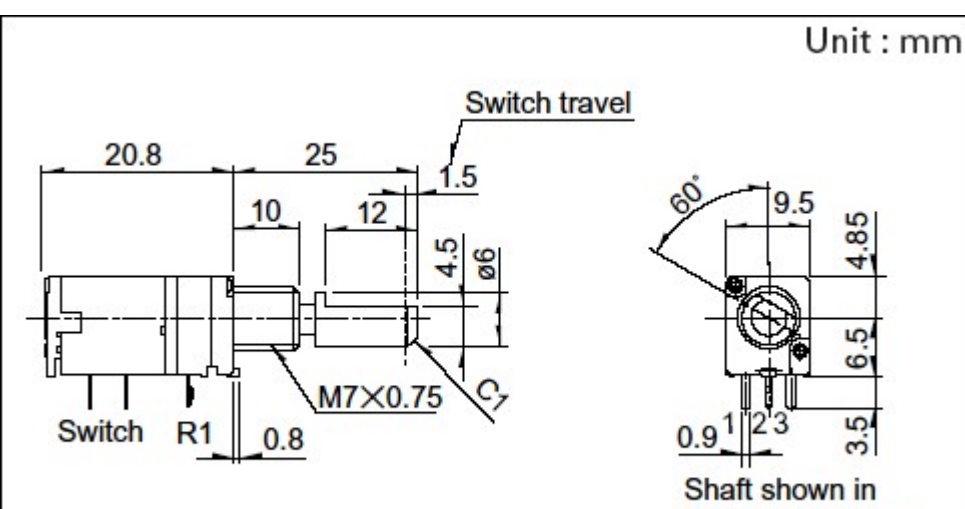
3D CAD (STEP) [↓](#)

Certificate of Compliance to RoHS regulations [↓](#)

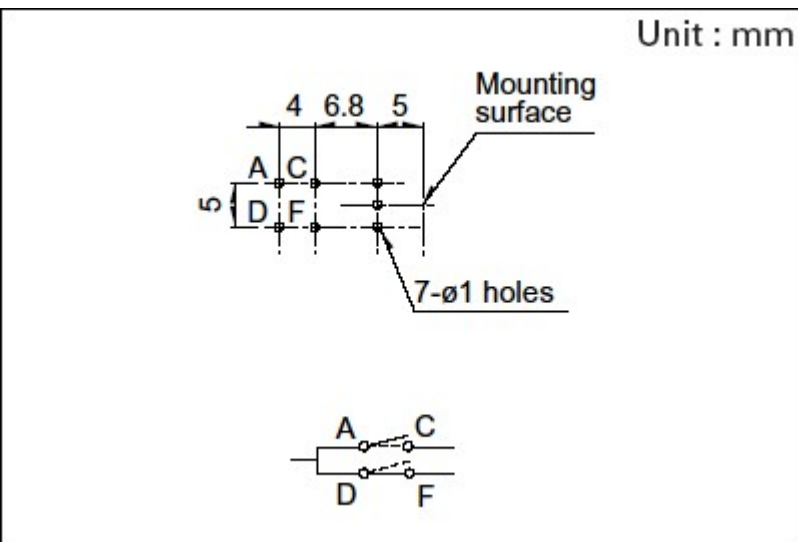
## Photo



## Dimensions

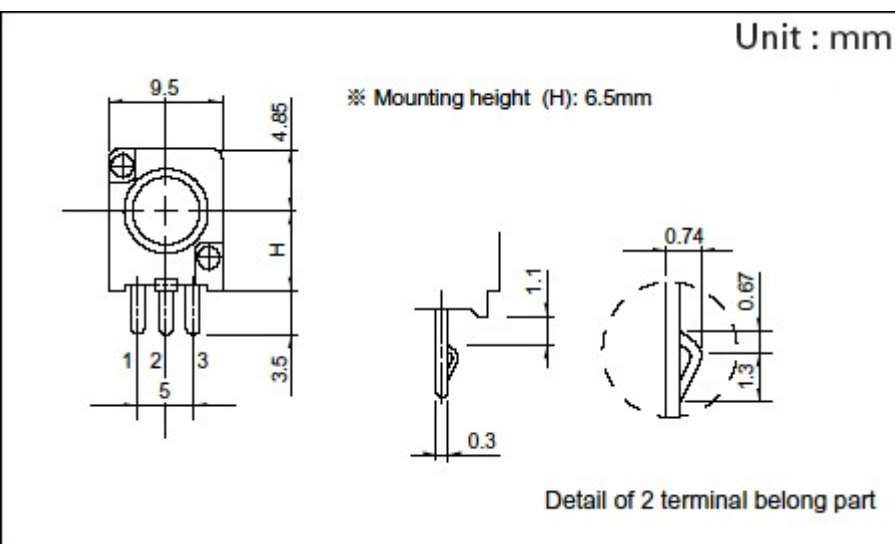


### Mounting Hole Dimensions



Viewed from mounting side.

### Dimensions of Terminal



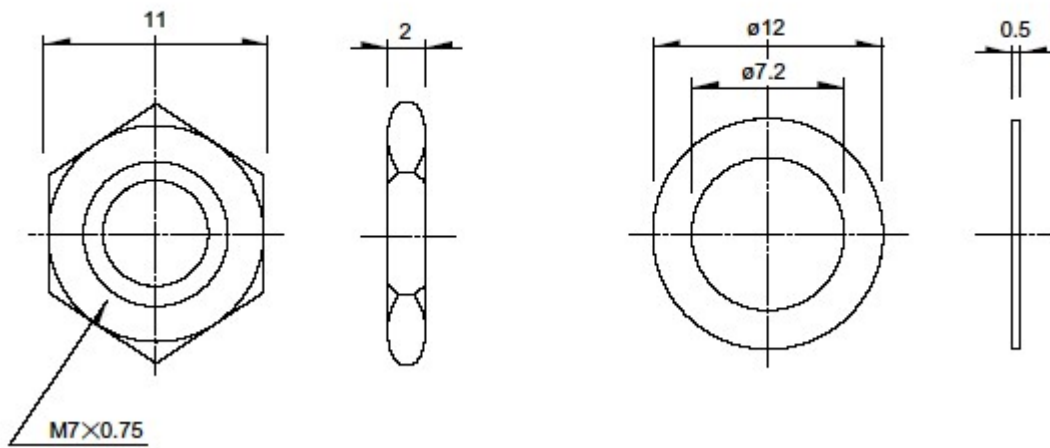
### Dimensions of Bushings

Bushing	M7
Dimensions	<p style="text-align: right;">Unit : mm</p> <p>The diagram shows a side view of a bushing with a diameter of 0.8 mm. The length is labeled as x. The distance from the left end to the center of the bushing is labeled as Y. A detail view (A) shows the bushing with a diameter of 0.8 mm and a length of 2 mm. The distance from the centerline to the edge is labeled as X.</p> <p style="text-align: center;">Detail (A)</p>

### Attached Parts

**Nut****Washer**

Unit : mm



These parts are attached to the following products.

**Packing Specifications****Tray**

Number of packages (pcs.)	1 case / Japan	700
	1 case / export packing	1,400
Export package measurements (mm)		373×540×181

**Soldering Conditions****Reference for Dip Soldering**

Preheating	Soldering surface temperature	100° max.
	Heating time	2 min. max.
Dip soldering	Soldering temperature	260±5° max.
	Soldering time	5±1s
No. of solders		2 time max.

**Reference for Hand Soldering**

Tip temperature	350° max.
Soldering time	3s max.
No. of solders	1 time

**Notes are common to this series/models.**

1. This site catalog shows only outline specifications. When using the products, please obtain formal specifications for supply.
2. For the switch attached, the single-shaft or inner shaft of the dual-shaft type can be chosen.
3. Please place purchase orders per minimum order unit (integer).
4. Products other than those listed in above products are also available. Please contact us for details.
5. This products can be used in vehicles.

Although these products are designed to perform over a wide operating temperature range, please ensure that you receive and read the formal delivery specifications before use.

## Inquiries about Products

 [Inquiry](#)