

With Knob Type RK10J/RK14J Series

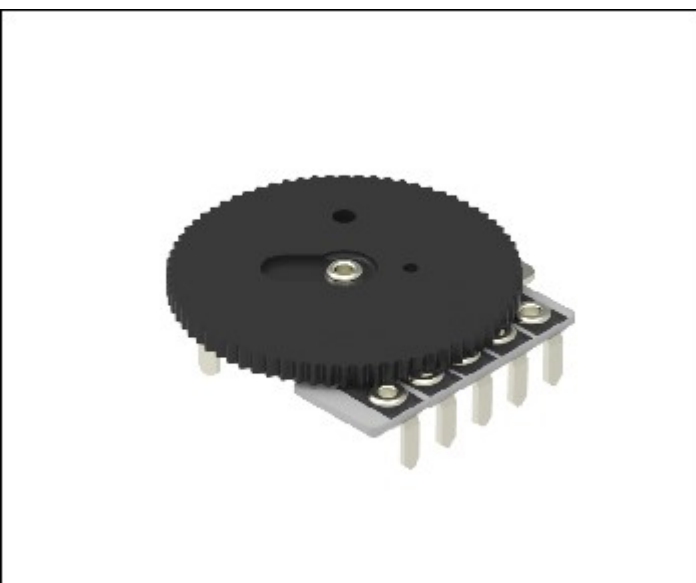
- [Photo](#) | 
 [Dimensions](#) | 
 [Mounting Hole Dimensions](#) | 
 [Terminal Layout](#) | 
 [Circuit Diagram](#) | 
 [Packing Specifications](#) | 
 [Soldering Conditions](#)

PRINT

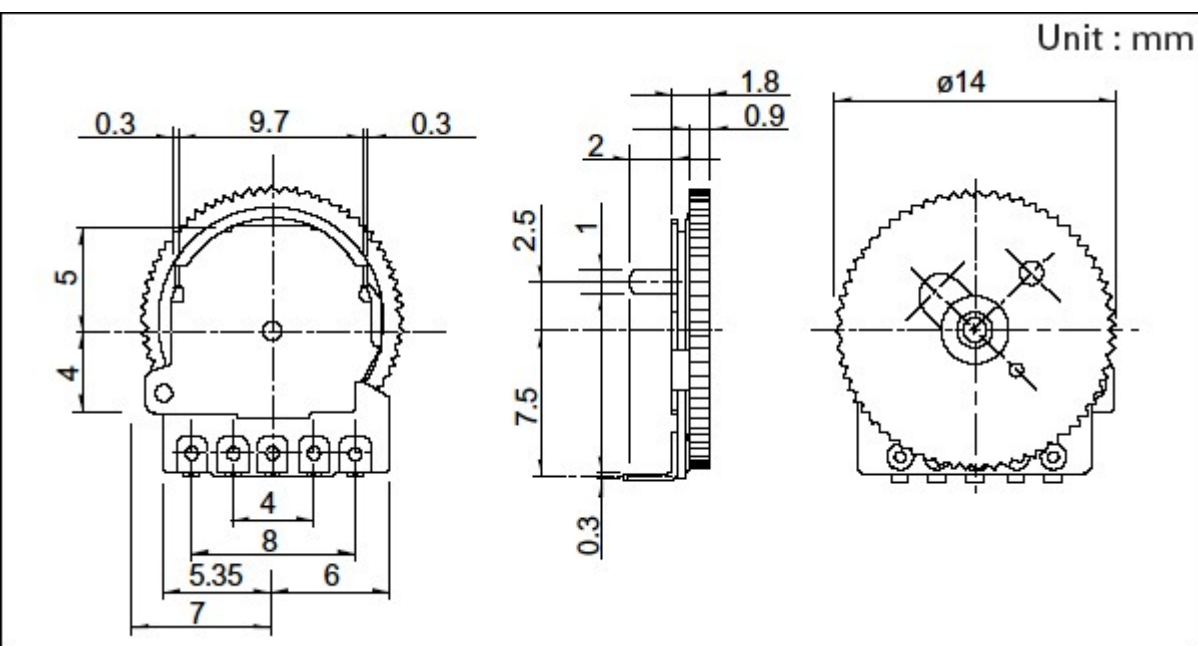
Part number	<b>RK10J11E002Y</b>	
Number of resistor elements	Single-unit	
Total resistance	20kΩ	
Resistance taper	3B	
Soldering	Manual	
Type	10mm Size	
Knob types	Outer size: φ14 Knob thickness: t0.9mm Color: Black	
Mounting board types	Insertion (t: 2mm)	
For DC use	20V DC	
Operating temperature range	-10ℓ to +60ℓ	
Electrical Performance	Total resistance tolerance	±30%
	Rated power	0.03W
	Maximum operating voltage	50V AC 20V DC
	Maximum attenuation	70dB min.
	Insulation resistance	100MΩ min. 100V DC
	Voltage proof	100V AC for 1 minute
Mechanical Performance	Total rotational angle	270°±10°
	Rotational torque	0.5 to 10mN·m
	Stopper strength	70mN·m
	Push-pull strength	5N
Durability	Operating life	10,000 cycles
Minimum order unit (pcs.)	Japan	3,000
	Export	2,400



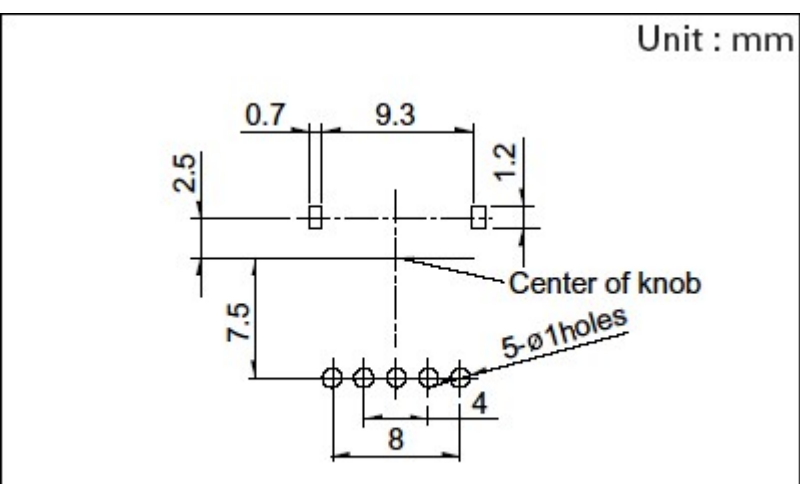
## Photo



## Dimensions

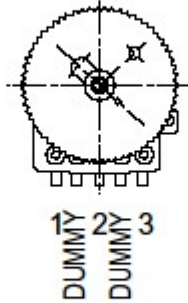


## Mounting Hole Dimensions

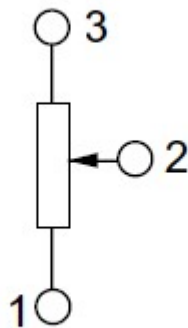


Viewed from mounting side.

## Terminal Layout



## Circuit Diagram



## Packing Specifications

### Bulk

Number of packages (pcs.) 1 case / Japan 3,000

1 case / export packing 2,400

Export package measurements (mm) 250×371×190

## Soldering Conditions

### Reference for Hand Soldering

Tip temperature

350℃ max.

Soldering time	3s max.
No. of solders	1 time

---

Notes are common to this series/models.

1. This site catalog shows only outline specifications. When using the products, please obtain formal specifications for supply.
2. Please place purchase orders per minimum order unit (integer).
3. Products other than those listed in above products are also available. Please contact us for details.
4. Dip soldering can be applied to RK14J. For dip soldering applications, specify separately as "dip soldering applicable product".

## Inquiries about Products

 [Inquiry](#)