

9mm Size Insulated Shaft Snap-in Type RK09K/RK09D Series

- [Photo](#) |
 [Dimensions](#) |
 [Mounting Hole Dimensions](#) |
 [Terminal Layout / Circuit Diagram](#) |
 [Packing Specifications](#) |
 [Soldering Conditions](#) |

PRINT

Part number	RK09K12C0A19	
Number of resistor elements	Dual-unit (50V AC)	
Mounting direction (Mounting height)	Vertical type	
Collar (Sleeve type)	Without	
Shaft types	Flat	
Length of the shaft LM1	15mm	
Center detent	Without	
Total resistance	10kΩ	
Resistance taper	15A	
Operating temperature range	-10 to +70	
Electrical Performance	Total resistance tolerance	±30%
	Rated power	0.03W
	Maximum operating voltage	50V AC for AC only
	Gang error	-40dB to 0dB 3dB max.
	Insulation resistance	100MΩ min. 250V DC
	Voltage proof	250V AC for 1 minute
Mechanical Performance	Total rotational angle	280°±5°
	Rotational torque	1 to 8mN·m
	Stopper strength	0.3N·m
	Push-pull strength	50N max.
	Vibration	10 to 55 to 10Hz/min., the amplitude is 1.5mm for all the frequencies, in the 3 direction of X, Y and Z and for 2 hours respectively
Durability	Operating life	10,000 cycles
Minimum order unit	Japan	1,000

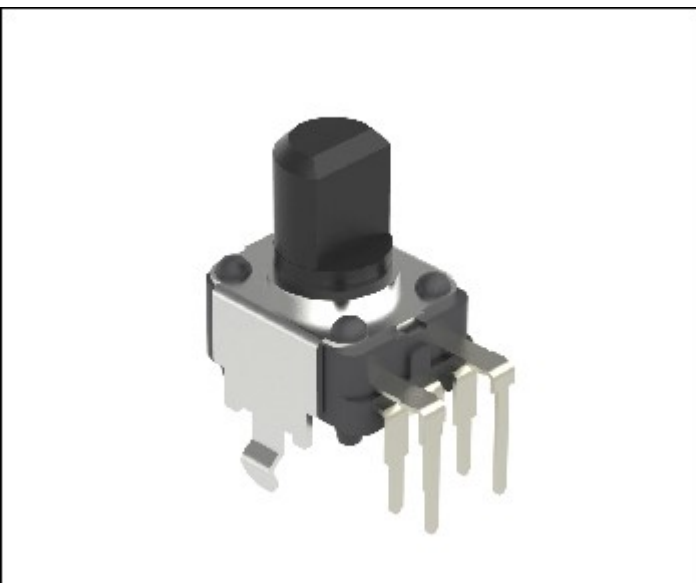
3D CAD (STEP)



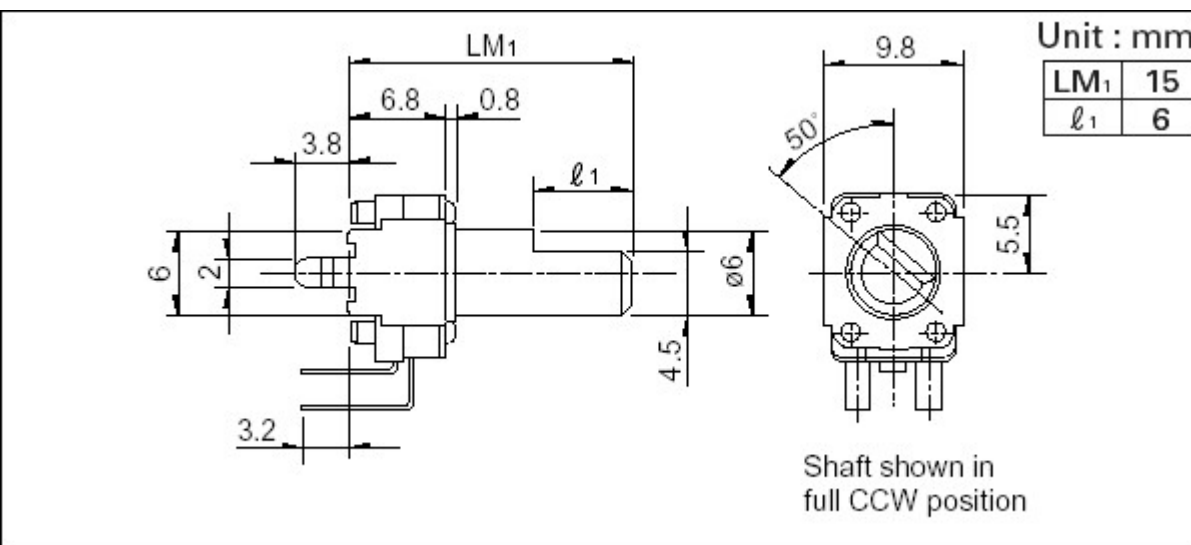
Certificate of Compliance to RoHS regulations



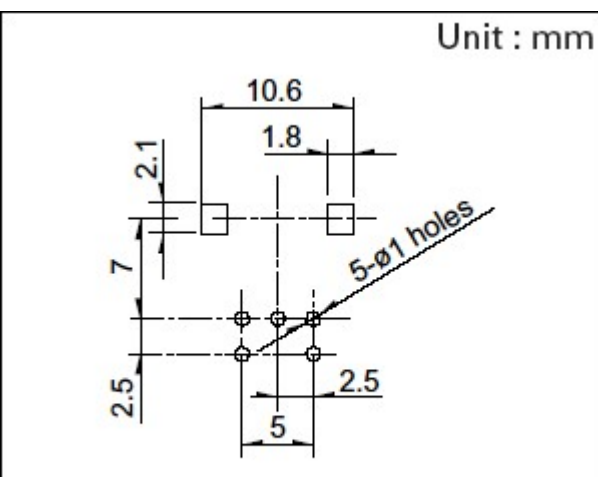
Photo



Dimensions

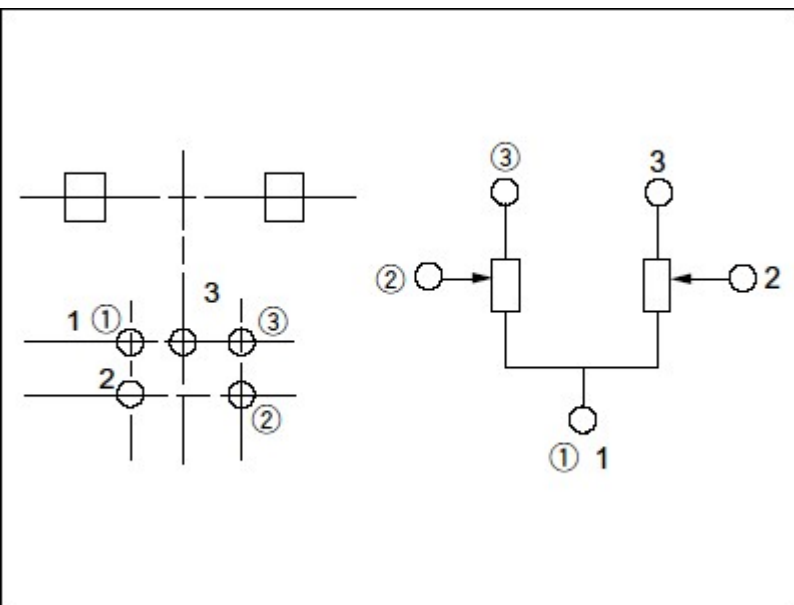


Mounting Hole Dimensions



Viewed from mounting side.

Terminal Layout / Circuit Diagram



Packing Specifications

Bulk

Number of packages (pcs.) 1 case / Japan 1,000

1 case / export packing 2,000

Export package measurements (mm) 368×530×180

Soldering Conditions

Reference for Hand Soldering

Tip temperature 350℃ max.

Soldering time 3s max.

No. of solders 1 time

Notes are common to this series/models.

1. This site catalog shows only outline specifications. When using the products, please obtain formal specifications for supply.
2. Please place purchase orders per minimum order unit (integer).
3. Products other than those listed in above products are also available. Please contact us for details.

Inquiries about Products

[Inquiry](#)

