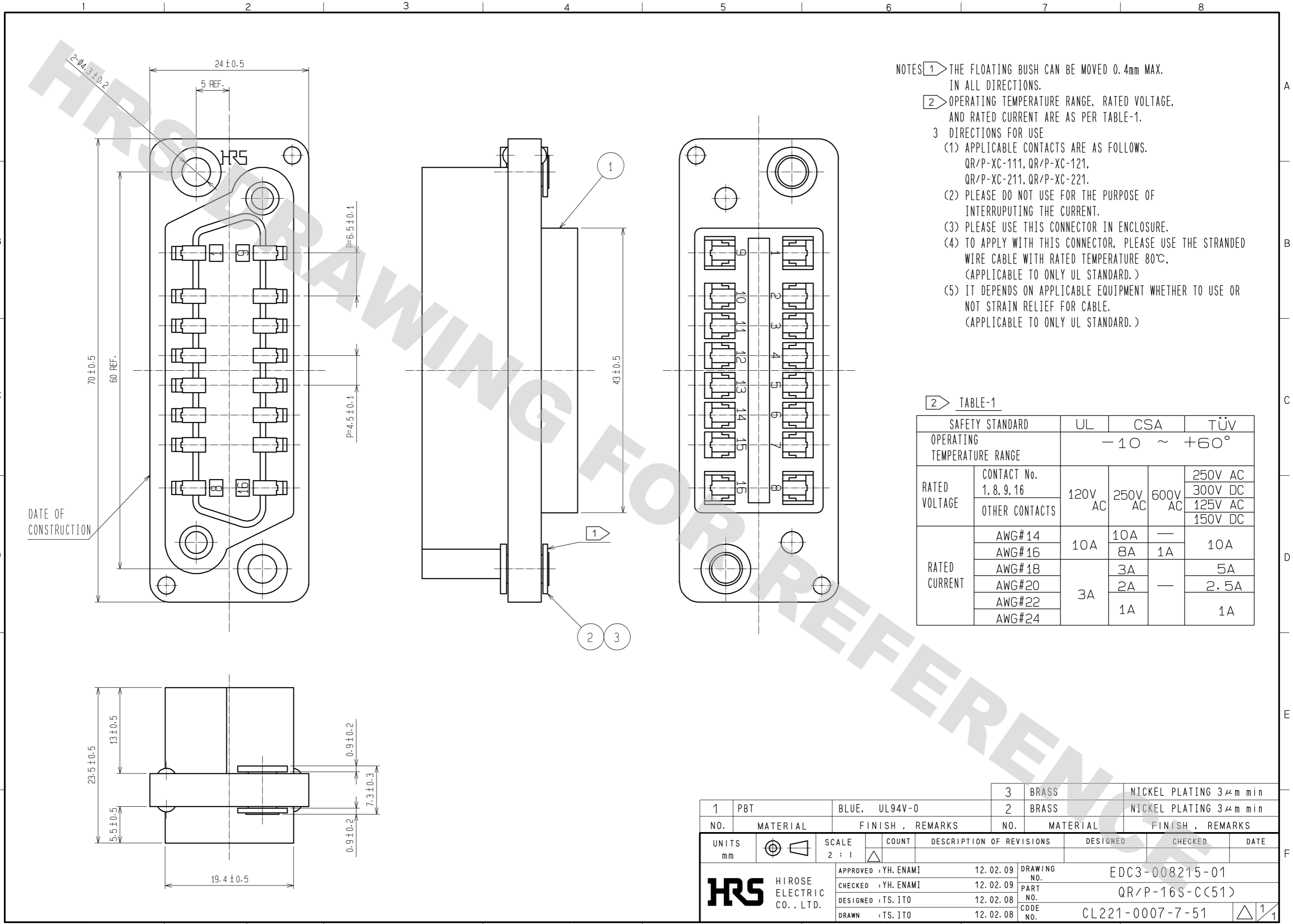


DRAWING FOR REFERENCE: This is subject to change without notice  
08/11/2012



- NOTES
- 1 THE FLOATING BUSH CAN BE MOVED 0.4mm MAX. IN ALL DIRECTIONS.
  - 2 OPERATING TEMPERATURE RANGE, RATED VOLTAGE, AND RATED CURRENT ARE AS PER TABLE-1.
  - 3 DIRECTIONS FOR USE
    - (1) APPLICABLE CONTACTS ARE AS FOLLOWS.  
QR/P-XC-111, QR/P-XC-121,  
QR/P-XC-211, QR/P-XC-221.
    - (2) PLEASE DO NOT USE FOR THE PURPOSE OF INTERRUPTING THE CURRENT.
    - (3) PLEASE USE THIS CONNECTOR IN ENCLOSURE.
    - (4) TO APPLY WITH THIS CONNECTOR, PLEASE USE THE STRANDED WIRE CABLE WITH RATED TEMPERATURE 80°C. (APPLICABLE TO ONLY UL STANDARD.)
    - (5) IT DEPENDS ON APPLICABLE EQUIPMENT WHETHER TO USE OR NOT STRAIN RELIEF FOR CABLE. (APPLICABLE TO ONLY UL STANDARD.)

2 TABLE-1

SAFETY STANDARD		UL	CSA	TÜV		
OPERATING TEMPERATURE RANGE		-10 ~ +60°				
RATED VOLTAGE	CONTACT No. 1, 8, 9, 16	120V AC	250V AC	600V AC	250V AC	
	OTHER CONTACTS				300V DC	
RATED CURRENT	AWG# 14	10A	10A	—	10A	
	AWG# 16		8A	1A	10A	
	AWG# 18	3A	3A	—	5A	
	AWG# 20		2A	—	2.5A	
	AWG# 22		1A	—	1A	
AWG# 24	—	—	—	—		

1	PBT	BLUE, UL94V-0	3	BRASS	NICKEL PLATING 3μm min
2	BRASS	NICKEL PLATING 3μm min	2	BRASS	NICKEL PLATING 3μm min
NO.	MATERIAL	FINISH, REMARKS	NO.	MATERIAL	FINISH, REMARKS
UNITS mm		SCALE 2:1		COUNT	DESCRIPTION OF REVISIONS
DESIGNED		CHECKED		DATE	
APPROVED : YH. ENAMI		12.02.09		DRAWING NO. EDC3-008215-01	
CHECKED : YH. ENAMI		12.02.09		PART NO. QR/P-16S-C(51)	
DESIGNED : TS. ITO		12.02.08		CODE NO. CL221-0007-7-51	
DRAWN : TS. ITO		12.02.08			