

TABLE 1

SAFETY STANDARD		UL		CSA		TÜV	
OPERATING TEMPERATURE RANGE		-10~+60°C					
RATED VOLTAGE	No. 1, 8, 9, 16	AC120V	AC250V	AC125V	AC250V	AC250V, DC300V	
	OTHERS					AC125V, DC150V	
CURRENT RATING	AWG #14	10A	3A	10A	3A	10A	
	AWG #16			8A			
	AWG #18	3A	1A	3A	1A	5A	
	AWG #20					2.5A	
	AWG #22						
	AWG #	No. 1, 8, 9, 16	2A	1A	2A	1A	1A
	24	OTHERS					
AWG #26	1A	0.5A	1A	0.5A			
AWG #28							

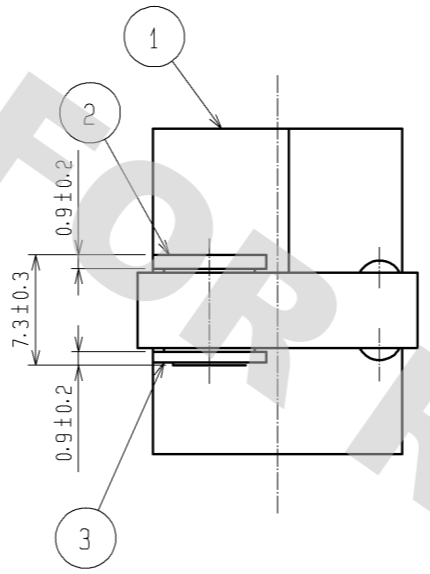
TABLE 2

APPLICABLE CONTACT	AWG No.
QR/P1-SC1A-※11	AWG #18~24
QR/P1-SC1B-※21	AWG #14~16
QR/P1-SC2A-※11	AWG #24~28
QR/P1-SC2B-※21	AWG #20~24

※: 1 INDICATED LOOSE CONTACT
2 INDICATED CHAIN CONTACT

NOTES

- THE TOLERANCE FOR EACH TERMINAL HOLE IS ±0.1.
- OPERATING TEMPERATURE RANGE, RATED VOLTAGE, CURRENT RATING ARE PER TABLE 1.
- THE FLOATING BUSH CAN BE MOVED 0.4mm MAX IN ALL DIRECTIONS.
- APPLICABLE CONTACTS FOR THIS CONNECTOR ARE PER TABLE 2.
- DIRECTIONS FOR USE
(1) PLEASE DON'T USE FOR THE PURPOSE OF INTERRUPTING THE CURRENT.
(2) PLEASE USE THIS CONNECTOR IN ENCLOSURE



2	BRASS	NICKEL PLATED 3μm MIN		3	BRASS	NICKEL PLATED 3μm MIN	
1	PBT	UL94V-0(BLACK)					
NO.	MATERIAL	FINISH	REMARKS	NO.	MATERIAL	FINISH	REMARKS
UNITS	mm	SCALE	2 : 1	COUNT	DESCRIPTION OF REVISIONS	DESIGNED	CHECKED
APPROVED : YH. ENAMI		08.03.07		DRAWING NO.		EDC3-020653-01	
CHECKED : HO. MIWA		08.03.07		PART NO.		QR/P1-16S-C(51)	
DESIGNED : KI. NAGANUMA		08.03.06		CODE NO.		CL221-0111-9-51	
DRAWN : KI. NAGANUMA		08.03.06					

DRAWING FOR REFERENCE: This is subject to change without notice
08/11/2012