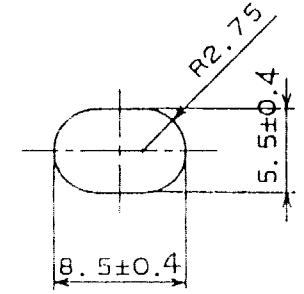
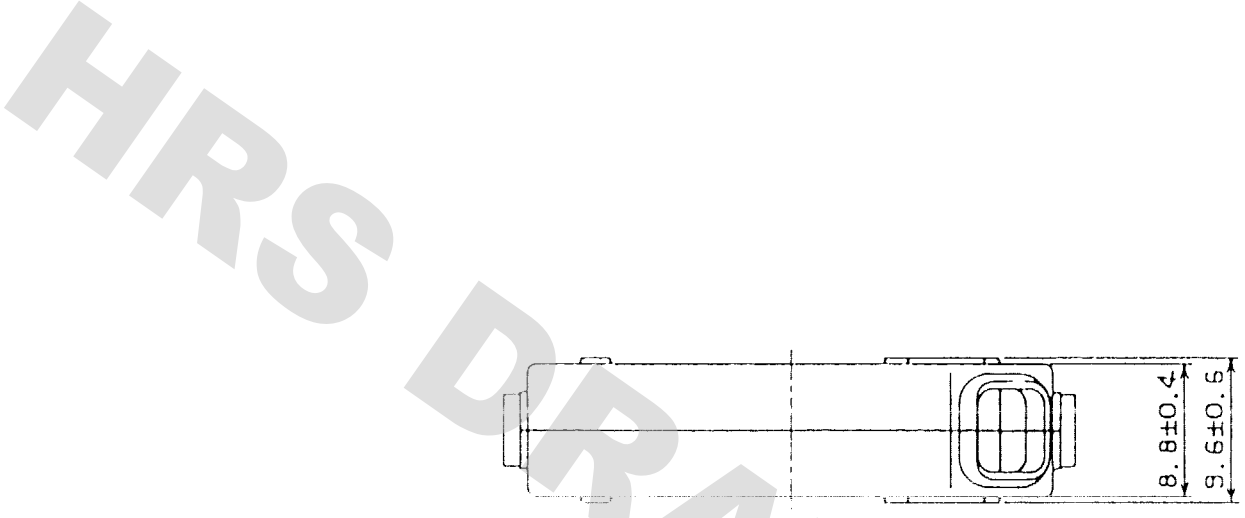
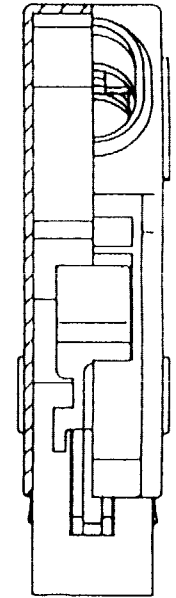


1 2 3 4 5 6 7 8

COUNT	DESCRIPTION OF REVISIONS	BY	CHKD	DATE	COUNT	DESCRIPTION OF REVISIONS	BY	CHKD	DATE

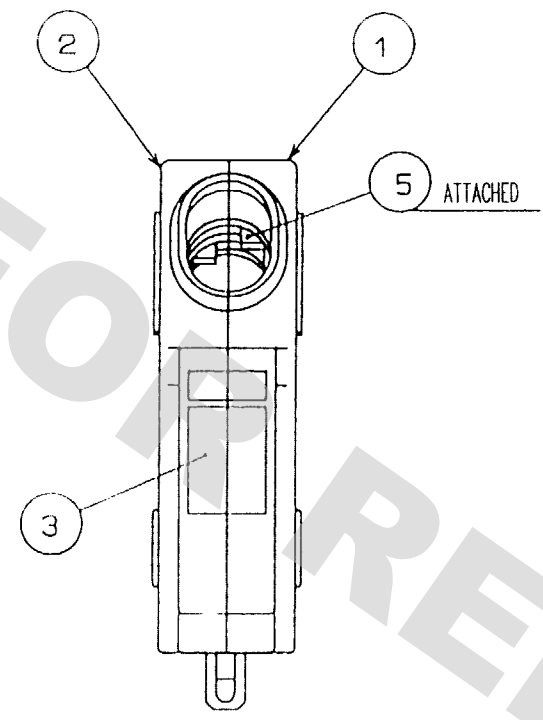
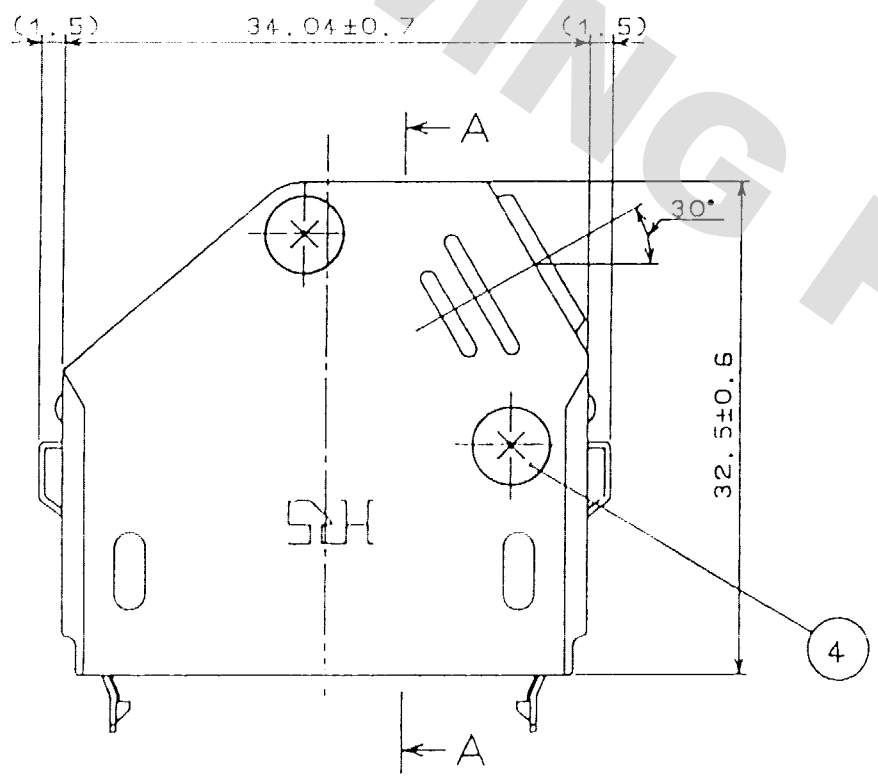


CABLE HOLE DIMENSION



CUT SECTION OF COVER CASE AND CONNECTOR ASSEMBLED (A-A)

(QM30-26PA-EP)



DRAWING FOR REFERENCE: This is subject to change without notice  
08/11/2012

TO
Q

3	STAINLESS STEEL				
2	ZINC ALLOY DIE CASTING	SILVER BURNING COATING (CONDUCTIVE CHROMATE TREATMENT)	5	STEEL	TIN PLATING
1	ZINC ALLOY DIE CASTING	SILVER BURNING COATING (CONDUCTIVE CHROMATE TREATMENT)	4	BRASS	NICKEL PLATING
NO.	MATERIAL	FINISH, REMARKS	NO.	MATERIAL	FINISH, REMARKS

CODE NO. (OLD) CL	DRAWN <i>J. Kamaya</i> 03.9.9	DESIGNED <i>J. Kamaya</i> 03.7.7	CHECKED <i>J. Enami</i> 03.09.09	APPROVED <i>H. Miura</i> 03.09.10	RELEASED
----------------------	-------------------------------------	--	--	---	----------

SCALE 2 : 1	DRAWING NO. EDC3-023331-01	PART NO. QM-26-CS(50)
UNITS mm	<b>HRS</b> HIROSE ELECTRIC CO., LTD	CODE NO. CL226-0059-2-50