

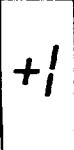


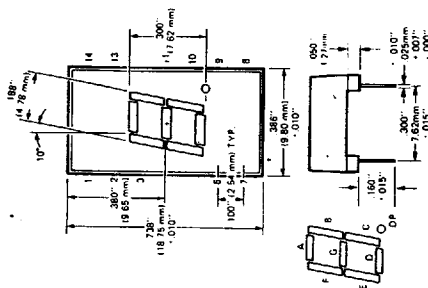


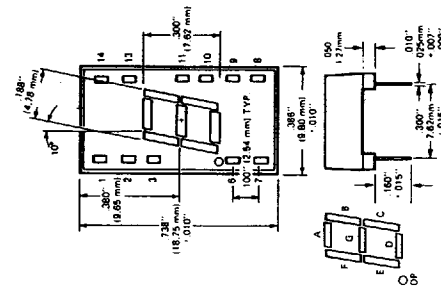
T-41-33

PACKAGE	DEVICE NO.	COLOR	DESCRIPTION	BRIGHTNESS OR LUMINOUS INTENSITY (PER SEG. MIN.)	PKG. KEY SEE PG. NO.
	MAN3410A	High Eff. Green	.3-Inch; Common Anode; RHDP	510 μ cd @ 10 mA	6-A
	MAN3610A	Orange		510 μ cd @ 10 mA	
	MAN3810A	Yellow		320 μ cd @ 10 mA	
	MAN3910A	High Eff. Red		320 μ cd @ 10 mA	
	MAN71A	Red		125 μ cd @ 10 mA	
	MAN3420A	High Eff. Green	.3-Inch; Common Anode; LHDP	510 μ cd @ 10 mA	6-B
	MAN3620A	Orange		510 μ cd @ 10 mA	
	MAN3820A	Yellow		320 μ cd @ 10 mA	
	MAN3920A	High Eff. Red		320 μ cd @ 10 mA	
	MAN72A	Red		125 μ cd @ 10 mA	
	MAN3430A	High Eff. Green	.3-Inch; Common Anode; Polarity & Overflow	510 μ cd @ 10 mA	7-C
	MAN3630A	Orange		510 μ cd @ 10 mA	
	MAN3830A	Yellow		320 μ cd @ 10 mA	
	MAN3930A	High Eff. Red		320 μ cd @ 10 mA	
	MAN73A	Red		125 μ cd @ 10 mA	
	MAN3440A	High Eff. Green	.3-Inch; Common Cathode; RHDP	510 μ cd @ 10 mA	7-D
	MAN3640A	Orange		510 μ cd @ 10 mA	
	MAN3840A	Yellow		320 μ cd @ 10 mA	
	MAN3940A	High Eff. Red		320 μ cd @ 10 mA	
	MAN74A	Red	125 μ cd @ 10 mA		
	MAN3480A	High Eff. Green	.3-Inch; Common Cathode; RHDP; 10-Pin	510 μ cd @ 10 mA	
	MAN3680A	Orange		510 μ cd @ 10 mA	
	MAN3880A	Yellow		320 μ cd @ 10 mA	
	MAN3980A	High Eff. Red		320 μ cd @ 10 mA	
	MAN78A	Red		125 μ cd @ 10 mA	
	FND310	High Eff. Red	.362-Inch; Common Anode; RHDP	2800 μ cd @ 20 mA	7-E
	FND350	Red		240 μ cd @ 20 mA	
	FND360	Hi-brite Red		590 μ cd @ 20 mA	
	FND317	High Eff. Red	.362-Inch; Common Cathode; RHDP	2800 μ cd @ 20 mA	
	FND357	Red		240 μ cd @ 20 mA	
	FND367	Hi-brite Red		590 μ cd @ 20 mA	

A



B



PIN CONNECTIONS (see note)

1	2	3	4	5	6	7	8	9	10	11	12	13	14	APPLICATIONS
Ac	Fc	ca	NP	NP	NC	Ec	Dc	DPc	Cc	Gc	NP	Bc	ca	Instruments Test Equipment Office Machines Computers Automobiles Clocks/Radios Communication Equipment Calculators CB Radios
Ac	Fc	ca	NP	NP	DPc	Ec	Dc	NC	Cc	Gc	NP	Bc	ca	
Ca Da	NP	Ca Da	NP	NP	NP	Dc	Cc	NC	Bc	Ac	NP	NP	Aa Ba	
Fa	Ga	NP	cc	NP	Ea	Da	Ca	DPa	NP	NP	cc	Ba	Aa	
Cc	Fa	Ga	Ea	Da	Cc	DPa	Ca	Ba	Aa	—	—	—	—	
ca	Fc	Gc	Ec	Dc	ca	DPc	Cc	Bc	Ac	—	—	—	—	
cc	Fa	Ga	Ea	Da	cc	DPa	Ca	Ba	Aa	—	—	—	—	

