






■ Features

- (1) For equipment designed to conform EMI regulations such as VCCI, CISPR, FCC, VDE, etc.
- (2) Attenuation effect against high voltage pulse noise
- (3) Attenuates conductive emission from power supply
- (4) Leakage current: 1mA max. (250V, 60Hz)
- (5) High shielded effect

■ Safety standard

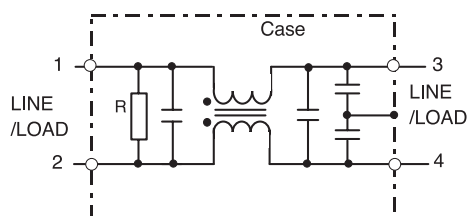
-  UL1283,  CSA Std. C22. 2 No. 8
 VDE0565 Teil. 3

■ Specifications

Item		Model	MBW-12R5-22	MBW-1201-22	MBW-1202-22	MBW-1203-22	MBW-1205-22
1	Rated voltage (AC, DC)		250V				
2	Rated current (AC, DC) (Note)		0.5A	1A	2A	3A	5A
3	Test voltage (terminal to case, AC 1 minute)		2500V				
4	Isolation resistance (terminal to case, 500VDC)		100M min.				
5	Leakage current	125V, 60Hz	0.5mA max.				
		250V, 60Hz	1mA max.				
6	DC resistance		5 max.	1.5 max.	0.6 max.	0.3 max.	0.2 max.
7	Temperature rise		30°C max.				
8	Operating temperature range		-25 ~ +85°C				
9	Weight (typ)		95g	95g	95g	160g	290g

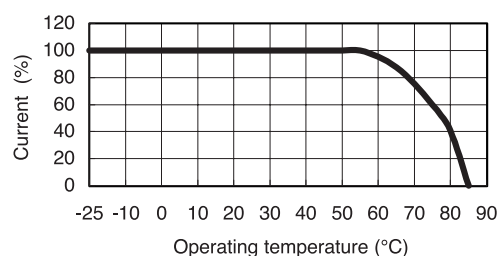
(Note) : Value at Ta ≤ 55°C. Refer to the derating curve shown below at Ta > 55°C.

■ Circuit



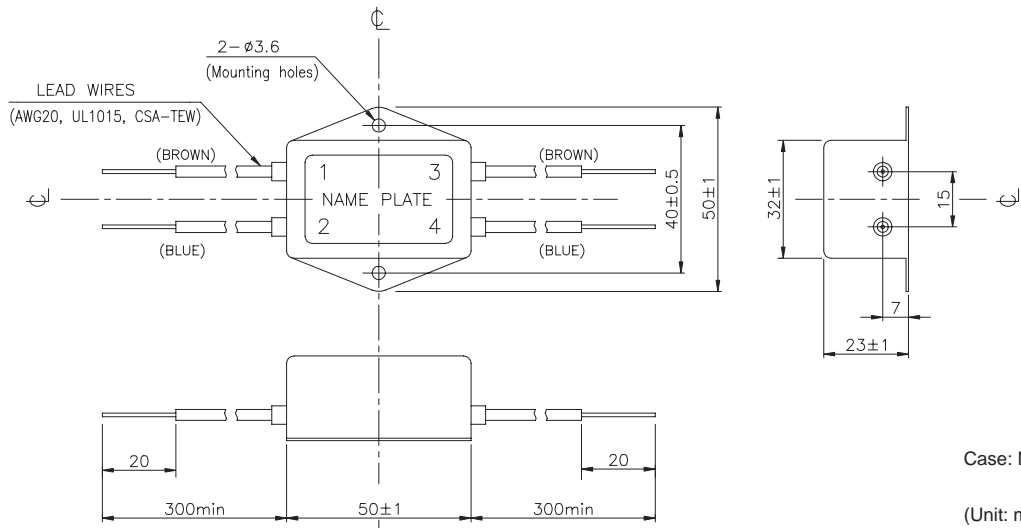
R: Breeder resistance

■ Derating

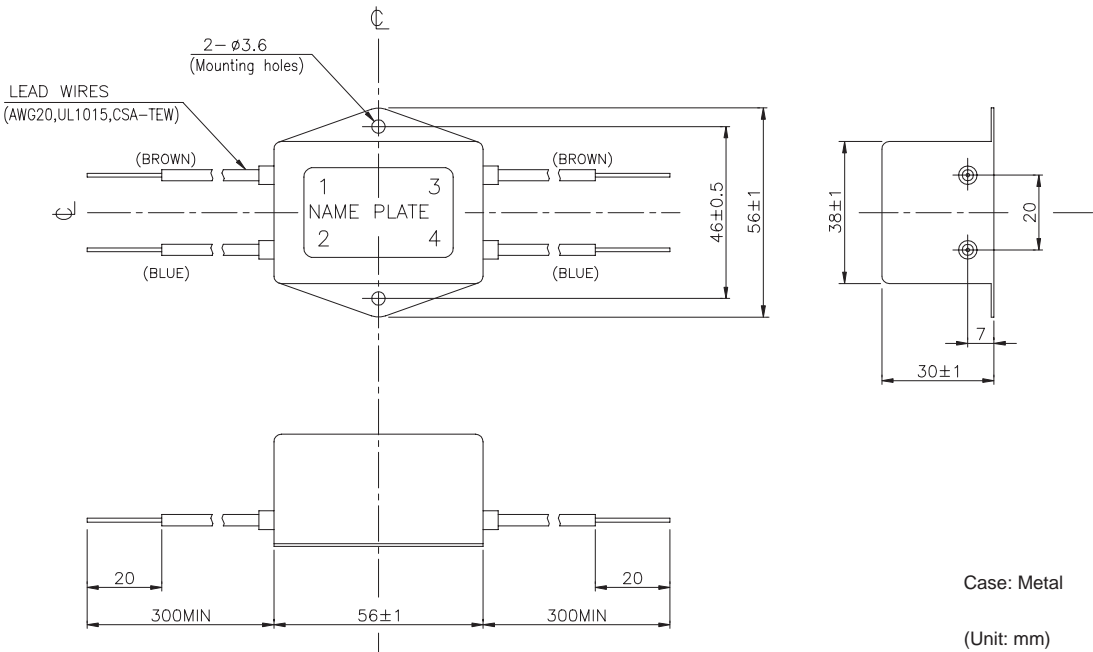


MBW-SERIES

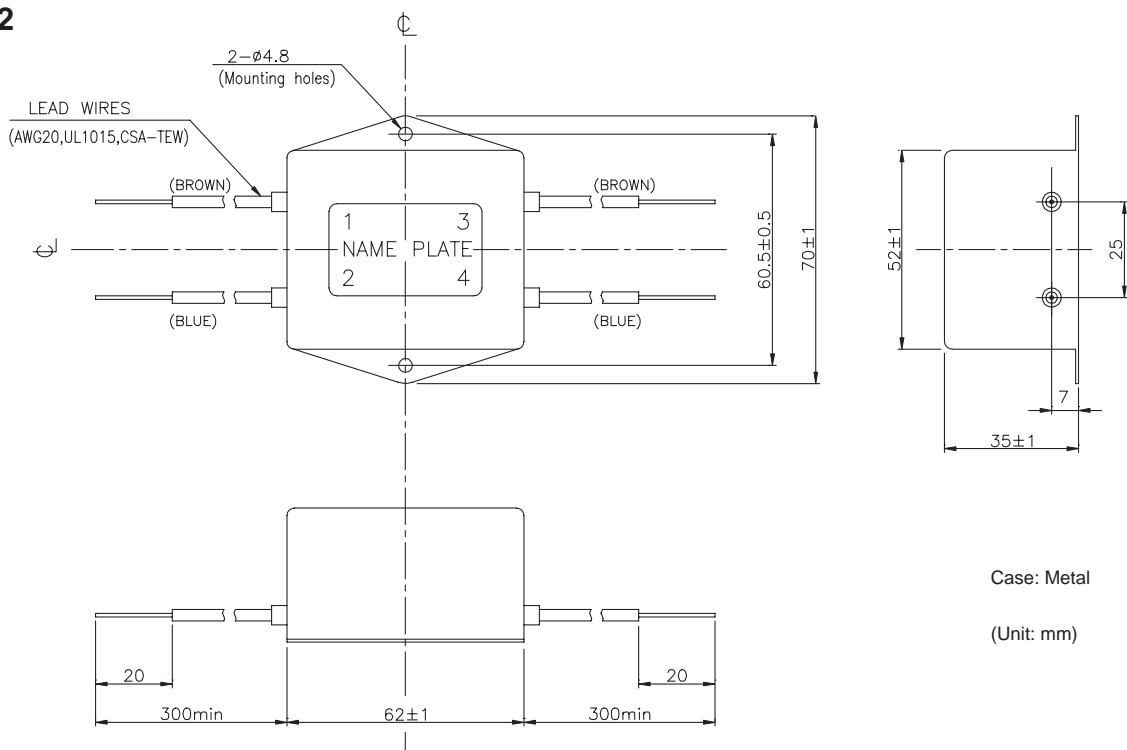
- MBW-12R5-22
- MBW-1201-22
- MBW-1202-22



- MBW-1203-22



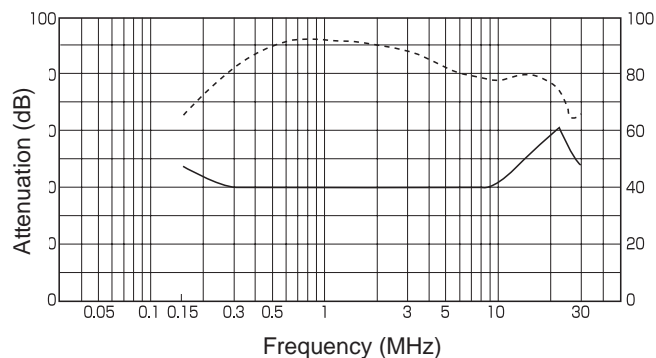
- MBW-1205-22



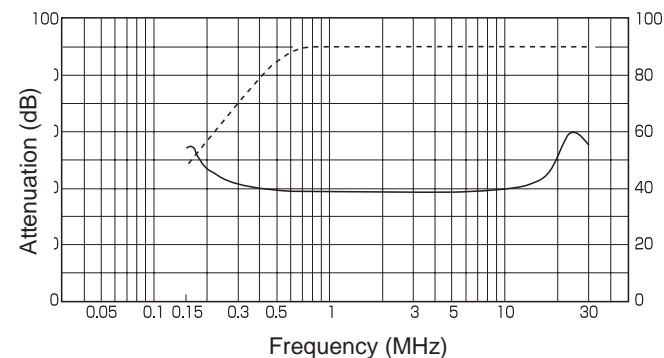
CHARACTERISTICS

■ Typical Insertion Loss Symmetrical
 ——— Asymmetrical

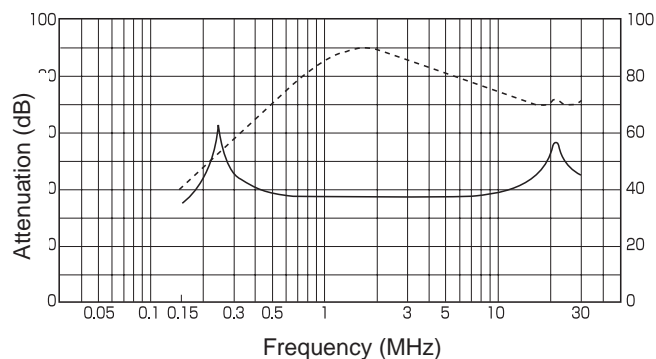
MBW-12R5



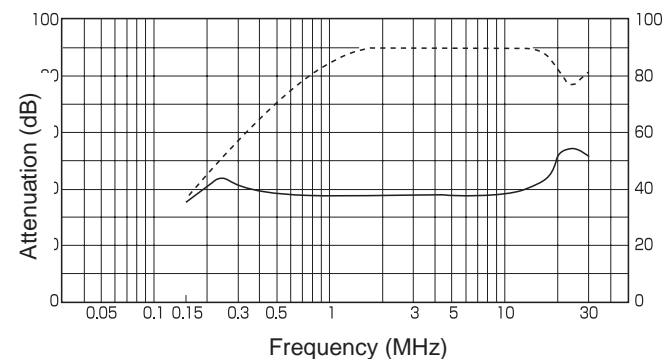
MBW-1201



MBW-1202



MBW-1203



MBW-1205

