

# CA-10 • CD-10

## ■ FEATURES

- Analog and digital types are available
- Internal lock mechanism provided
- Simple Installation



## ■ LIST OF PART NUMBERS

Item	Part number
Analog type	CA-10
Digital type	CD-10

## ■ STANDARD SPECIFICATIONS

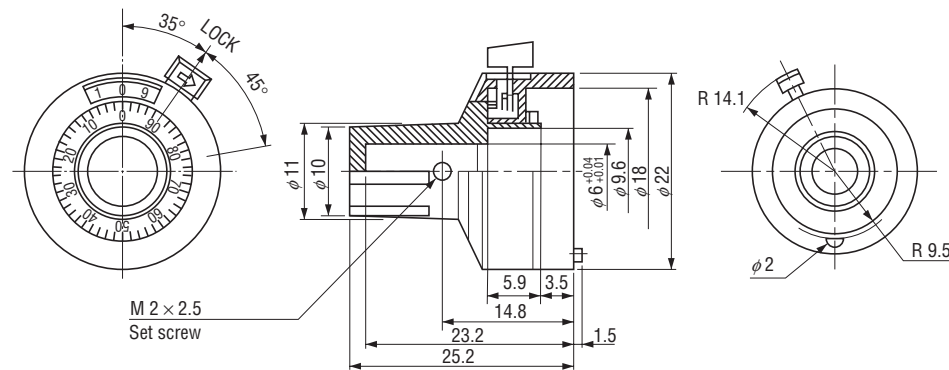
Item	Part number	Analog type	Digital type
		CA-10	CD-10
No. of digits		—	3 digits (000 ~ 999)
No. of turns		10 turns (3600°)	
Minor scale division		1/50 turn	—
Minimum scale division		—	1/500 turn
Shaft diameter	mm	$\phi 6$	
Maximum rotational speed	min <sup>-1</sup>	50	
Rotational torque	mN·m {gf·cm} maximum	9.81 {100}	19.6 {200}
Rocking torque	N·m {kgf·cm} maximum	0.069 {0.7}	0.098 {1}
Indicator shift in rocking		1 scale maximum	2 scales maximum
Life		2 million turns (in 30 min <sup>-1</sup> )	
Operating temp. range	°C	−40 ~ 85	−40 ~ 80
Net weight	g	Approx. 15	Approx. 42

## CA-10/CD-10 TURNS COUNTING DIALS

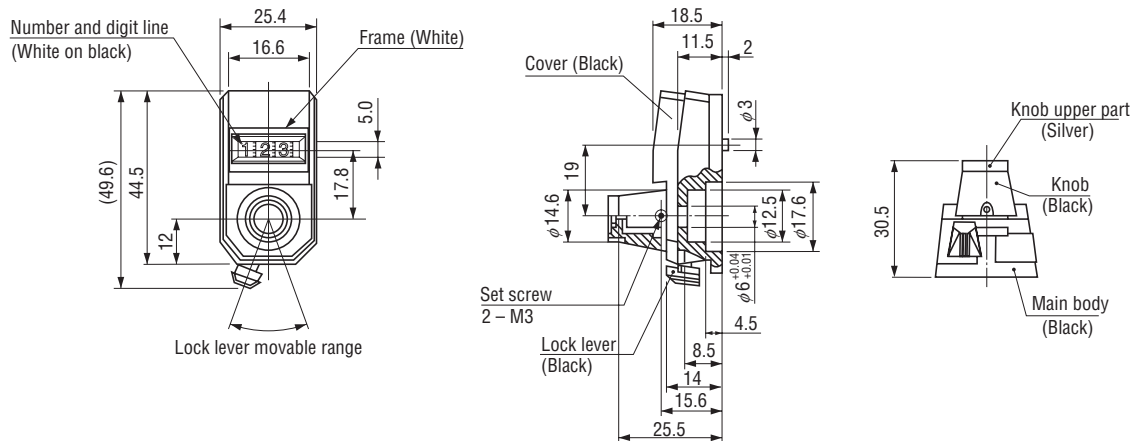
## ■ OUTLINE DIMENSIONS

(Unit: mm)

- **Analog dial**  
**CA-10**

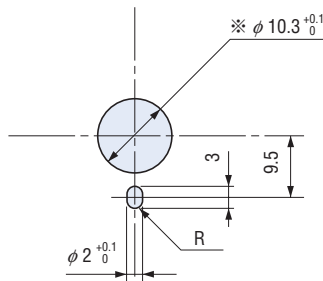


- Digital dial CD-10



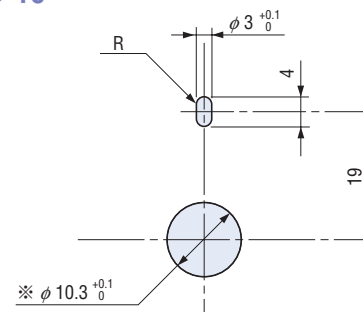
## ■ DIMENSION AND LOCATION OF MOUNTING HOLES (RECOMMENDED)

● CA-10



\* Dimensions show those in case of mounting M-22S10, M-22E10.  
For hexagonal wrench is provided as an option.

● **CD-10**



(Unit: mm)

**<CA-10>**

- Install so that no radial load will be applied to the shaft.
- Use a 0.89 hexagonal wrench for the set screw, and tighten with torque of less than 0.147 N·m {1.5 kgf·cm}.

<CD-10>

- Use a 0.89 hexagonal wrench for the set screw, and tighten with torque of less than 0.49 N·m {5 kgf·cm}.
- Install so that no radial load will be applied to the shaft.