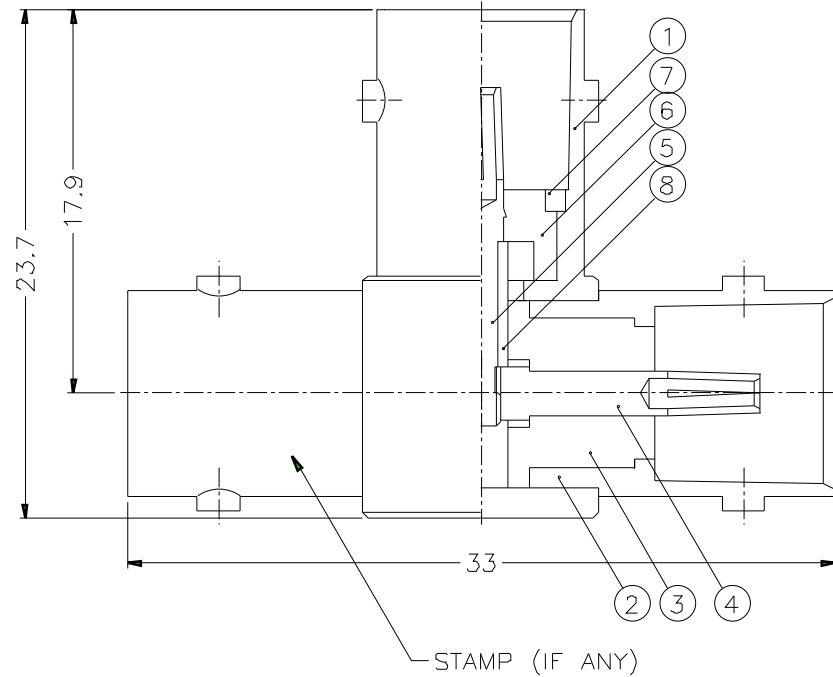


1			2			3			4			5			6			7			8		
REVISIONS																							
ISS	ZONE	DESCRIPTION\PER REQUEST\DATE																					



NOTES: FINISH (PLATING THICKNESS IN MICRO-INCHES)
 1. BRASS PER QQ-B-626
 2. NICKEL PL. 100 MIN. THICK OVER COPPER STRIKE
 3. PHOSPHOR BRONZE PER QQ-B-750
 4. GOLD PL 3 MIN. THICK OVER NICKEL PL. 100 MIN. THICK OVER COPPER STRIKE

8	SLEEVE	DELTRIN	NATURAL	1	SL-25/17X6	DIMENSIONS ARE IN MILLIMETERS				PART NO.	B8073A1-ND3G-75		Amphenol			
7	LOCK RING	NOTE 1	NOTE 2	1	LR-79/62X08	UNLESS OTHERWISE SPECIFIED TOLERANCES 0.5-6 = ±0.2 6-30 = ±0.4 30-120 = ±0.6 120-315 = ±1 315-1000 = ±1.6 1000-2000 = ±2.4				APPROVED	DATE	10-11-01'				
6	INSULATOR	DELTRIN	NATURAL	1	B8073A1-6-75					CHECKED	DATE	10-11-01'		DRAWING NO.	KJ-B8073A1-ND3G-75	
5	CONTACT PIN	NOTE 3	NOTE 4	1	B8073A1-5					DRAWN	DATE	10-11-01'		ITEM NO.		
4	CONTACT PIN	NOTE 3	NOTE 4	1	B7996-5											
3	INSULATOR	DELTRIN	NATURAL	2	B9073A1-4-75											
2	BODY	NOTE 1	NOTE 2	2	B9073A1-3											
1	HOUSING	NOTE 1	NOTE 2	1	B7995-1											
NO.	DESCRIPTION	MATERIAL	FINISH	Q'TY	DRAWING NO.	SCALE	3/1	ISSUE	A	FILE NO.						

1			2			3			4			5			6			7			8		
---	--	--	---	--	--	---	--	--	---	--	--	---	--	--	---	--	--	---	--	--	---	--	--