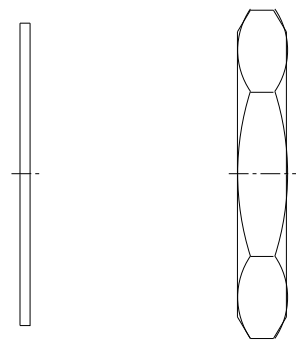
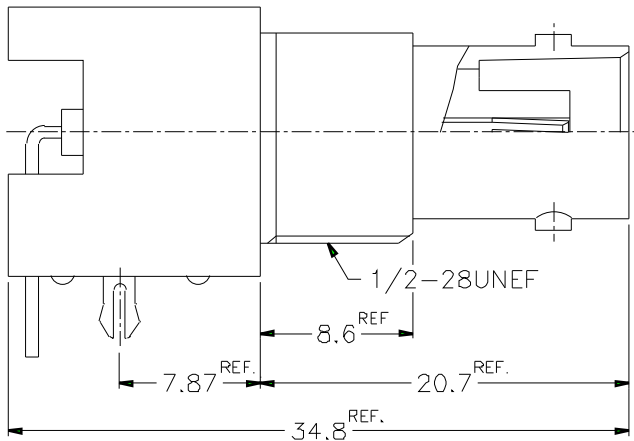
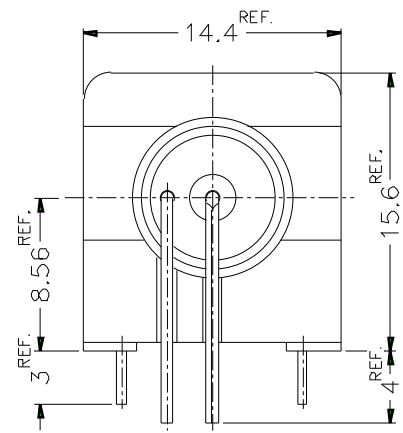
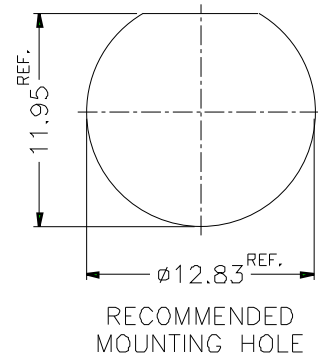
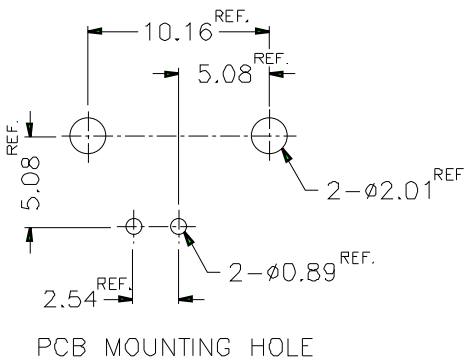


REVISIONS		
ISS	ZONE	DESCRIPTION\PER REQUEST\DATE



- NOTES: FINISH (PLATING THICKNESS IN MICRO-INCHES)
- BRASS PER QQ-B-626
  - BRASS PER QQ-B-613
  - NICKEL PL. 100 MIN. THICK OVER ZINC ALLOY
  - TIN PLATING
  - PHOSPHOR BRONZE PER QQ-B-750
  - GOLD FLASH OVER NICKEL PL. 50 MIN. THICK AT MATING AREA.  
TIN-LEAD PL 100 MIN. THICK OVER NICKEL PL. 50 MIN. THICK AT TAIL.
  - ZINC DIECAST
  - POLYPROPYLENE UL 94HB
  - PBT (UL 94 V-0)

1. MAX. PANEL THICKNESS=5mm

8	HEX NUT	NOTE 1	NOTE 3		
7	LOCK WASHER	NOTE 2	NOTE 3		
6	MOUNTING POST	NOTE 2	NOTE 4		
5	POST	COPPER	NOTE 4		
4	CONTACT PIN	NOTE 5	NOTE 6		
3	INSULATOR	NOTE 8	NATURAL		
2	BODY	NOTE 7	NOTE 3		
1	HOUSING	NOTE 9	WHITE		
NO.	DESCRIPTION	MATERIAL	FINISH	Q'TY	DRAWING NO.

DIMENSIONS ARE IN MILLIMETERS  
UNLESS OTHERWISE SPECIFIED TOLERANCES

0.5-6	= ±0.2
6-30	= ±0.4
30-120	= ±0.6
120-315	= ±1
315-1000	= ±1.6
1000-2000	= ±2.4

PART NO.	B6252H5-NPP3G-50	
APPROVED	DATE	10-11-01'
CHECKED	DATE	10-11-01'
DRAWN	DATE	10-11-01'
FILE NO.		

<b>Amphenol</b>	
TITLE	BNC R/A PC MOUNT RECEPT. JACK
DRAWING NO.	KJ-B6252H5-NPP3G-50
ITEM NO.	

1	2	3	4	5	6	7	8
---	---	---	---	---	---	---	---