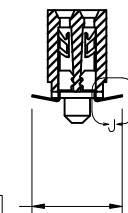
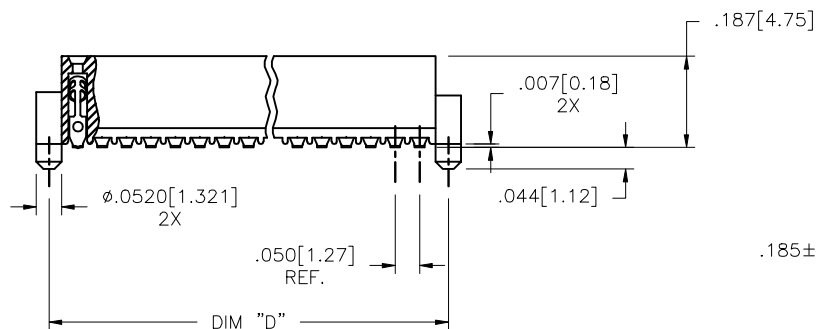
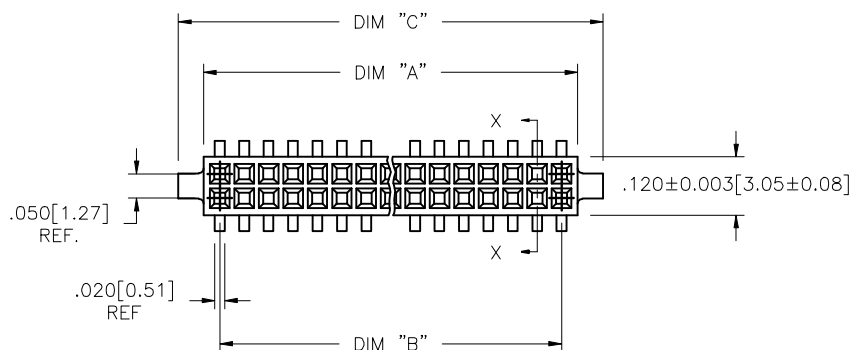
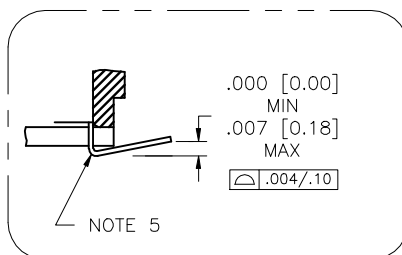


PRODUCT NUMBER
SEE TABLE



SECTION X-X



DETAIL J
SCALE 10/1

mat'l. code				surface ISO 1302	tolerance ISO 406 ISO 1101	projection	product family
-							RIB CAGE
ltr	ecn no	dr	date	tolerances unless otherwise specified		INCH/MM	title
AA	V10994	DLW	3/09/01	angles	xx ±.01/.3		.050cc VERT. CARD CONN.
AB	V11674	CRG	6/22/01	linear	xxx ±.005/.13	Scale 3:1	SURF. MT. W/LOC. FEATURES
AC	M05-0084	MHT	5/05/05	σ±2°	xxxx ±.0020/.050		
AD	M06-0284	AEA	7/27/06	dr	M. CLOUSER	5/25/91	dwg no
AE	M07-0267	MHT	6/08/07	engr	B. BARUFFALO	5/25/91	sheet 1 of 4 size
AF	M07-0345	AGS	7/26/07	chr	B. BARUFFALO	5/25/91	A3
AG	M09-0058	CMR	4/06/09	appd	B. BARUFFALO	5/25/91	type
sheet	revision	AG	AG	AG	AG	AG	Product Customer Drawing
index	sheet	1	2	3	4		

PRODUCT NO.
87023 - XXX

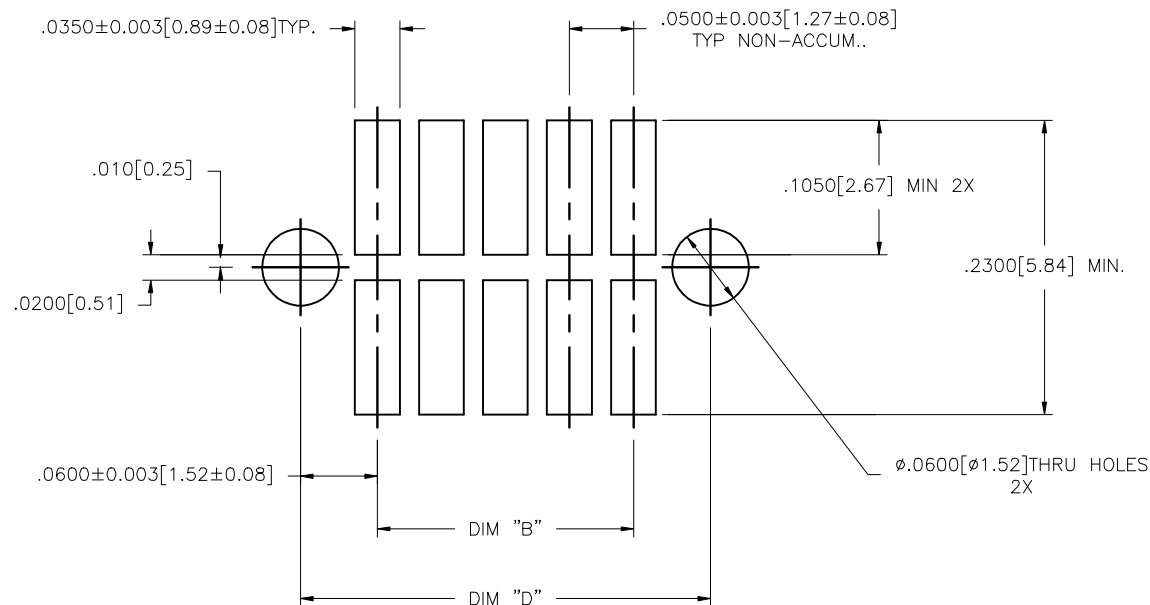
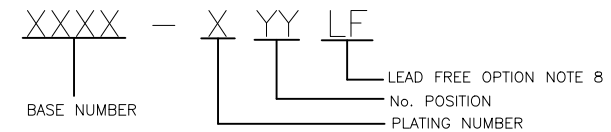


FIGURE A
RECOMMENDED
P.C.B. LAYOUT

mat'l. code				surface ISO 1302	tolerance ISO 406 ISO 1101	projection	product family
ltr	ecn no	dr	date	tolerances unless otherwise specified		INCH/MM	RIB CAGE
AG				angles	linear		title
				0°±2'	xxx ±.01/.3	Scale 3:1	.050cc VERT. CARD CONN.
					xxx ±.005/.13		SURF. MT. W/LOC. FEATURES
					xxxx ±.0020/.050		dwg no
				dr	M. CLOUSER 5/25/91	FCJ	sheet 2 of 4 size
				engr	B. BARUFFALO 5/25/91		A3
				chr	B. BARUFFALO 5/25/91		
				appd	B. BARUFFALO 5/25/91		
sheet	revision						type
index	sheet						Product Customer Drawing

PRODUCT NO. NOTE 8	SIZE	DIM A	DIM B	DIM C	DIM D	SPECIAL PACKAGING	TAPE WIDTH PITCH	PIECES PER REEL
87023-605	2 X 5	.266/6.756	.200/5.08	.370/9.398	.3200/8.128	NO	—	—
-610	2 X 10	.516/13.106	.450/11.43	.620/15.748	.5700/14.478	NOTE 6	24mm 12mm	750
-615	2 X 15	.766/19.456	.700/17.78	.870/22.098	.8200/20.828	NOTE 6	44mm 12mm	500
-620	2 X 20	1.016/25.806	.950/24.13	1.120/28.448	1.0700/27.178	NOTE 6 & 7	44mm 12mm	500
-625	2 X 25	1.266/32.156	1.200/30.48	1.370/34.798	1.3200/33.528	NOTE 6	56mm 12mm	500
-630	2 X 30	1.516/38.506	1.450/36.83	1.620/41.148	1.5700/39.878	NOTE 6 & 7	56mm 12mm	500
-635	2 X 35	1.766/44.856	1.700/43.18	1.870/47.498	1.8200/46.228	NO	—	—
-640	2 X 40	2.016/51.206	1.950/49.53	2.120/53.848	2.0700/52.578	NOTE 7	—	—
-645	2 X 45	2.266/57.556	2.200/55.88	2.370/60.198	2.3200/58.928	NO	—	—
-650	2 X 50	2.516/63.906	2.450/62.23	2.620/66.548	2.5700/65.278	NO	—	—
-905	2 X 5	.266/6.756	.200/5.08	.370/9.398	.3200/8.128	NO	—	—
-910	2 X 10	.516/13.106	.450/11.43	.620/15.748	.5700/14.478	NO	—	—
-915	2 X 15	.766/19.456	.700/17.78	.870/22.098	.8200/20.828	NO	—	—
-920	2 X 20	1.016/25.806	.950/24.13	1.120/28.448	1.0700/27.178	—	—	—
-925	2 X 25	1.266/32.156	1.200/30.48	1.370/34.798	1.3200/33.528	NO	—	—
-930	2 X 30	1.516/38.506	1.450/36.83	1.620/41.148	1.5700/39.878	NO	—	—
-935	2 X 35	1.766/44.856	1.700/43.18	1.870/47.498	1.8200/46.228	NO	—	—
-940	2 X 40	2.016/51.206	1.950/49.53	2.120/53.848	2.0700/52.578	NO	—	—
-945	2 X 45	2.266/57.556	2.200/55.88	2.370/60.198	2.3200/58.928	NO	—	—
87023-950	2 X 50	2.516/63.906	2.450/62.23	2.620/66.548	2.5700/65.278	NO	—	—



NOTES:

- HOUSING MATERIAL:
GLASS FILLED THERMOPLASTIC FLAME RETARDANT PER UL 94V-0
COLOR: NATURAL
- TERMINAL MATERIAL: BeCu
- TERMINAL PLATING:
LEAD FREE OPTION
-6XXLF- 30u"/.76u MIN HARD GOLD OVER Ni ON CONTACT ZONES.
100u"/2.54u MIN PURE TIN OVER Ni
IN SOLDERING ZONES, OTHERWISE GOLD FLASH OR UNPLATED.
-9XXLF- 60u"/1.52u MIN HARD GOLD ON CONTACT ZONES,
100u"/2.54u MIN PURE TIN OVER Ni
OVER Ni IN SOLDERING ZONES, OTHERWISE GOLD FLASH OR UNPLATED.
TIN LEAD OPTION
-6XX- 30u"/.76u MIN HARD GOLD OVER Ni ON CONTACT ZONES.
100u"/2.54u MIN SnPb OVER Ni
IN SOLDERING ZONES, OTHERWISE GOLD FLASH OR UNPLATED.
- APPLICATION INFORMATION:
A. RECOMMENDED MOUNTING PAD PATTERN IS
SHOWN IN FIGURE "A".
B. MATING PINS TO BE .0176/.447 TO .0181/.459 DIA.
C. MATING PIN TIPS TO BE IN TRUE POSITION TO MATING
GRID WITHIN .006/.15 DIA.
D. SUGGESTED MATING PIN LENGTH .130/3.30
±.010/.25.

- LEAD TIPS TO BE ABOVE HEEL, UP TO .007/0.18 MAX.
COPLANARITY TO BE MEASURED AT LOWEST POINT (HEEL).
- ADD "TR" TO END OF DASH NUMBER FOR TAPE AND REEL
PACKAGED WITH CAP. TOOLED ONLY FOR NOTED CONNECTORS.
- ADD "CT" TO END OF DASH NUMBER FOR CONNECTOR WITH
CAP FOR VACUUM PICKUP IN TUBE.
- ADD LF SUFFIX AT THE END OF PART NUMBER
FOR LEAD FREE OPTION.
- THE HOUSING WILL WITHSTAND EXPOSURE TO 260°C PEAK TEMPERATURE
FOR 20 SECONDS IN A CONVECTION, INFRA-RED OR VAPOR PHASE REFLOW
OVEN. SEE APPLICATION NOTE/PROCEDURES IF THEY ARE AVAILABLE.
- THIS PRODUCT MEETS EUROPEAN UNION DIRECTIVES AND OTHER
COUNTRY REGULATION AS DESCRIBED IN GS-22-008.

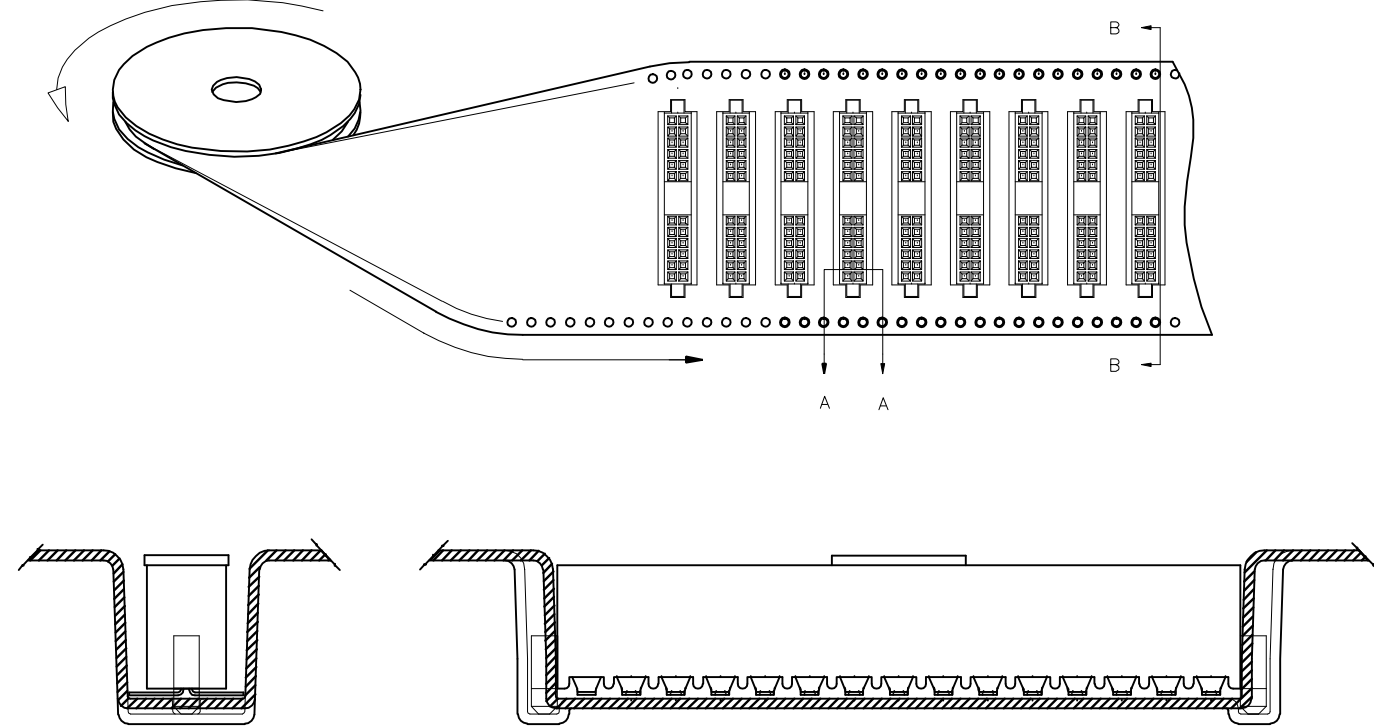
mat'l. code		surface		ISO 1302	tolerance	ISO 406	projection	product family
—		—		—	—	—	—	RIB_CAGE
ltr	ecp no	dr	date	tolerances unless otherwise specified		INCH/MM		title
AG				angles	linear	xx ±.01/.3		.050cc VERT. CARD CONN.
				0'±2'		xxx ±.005/.13	Scale 3:1	SURF. MT. W/LOC. FEATURES
				dr	M. CLOUSER	5/25/91		dwg no
				engr	B. BARUFFALO	5/25/91		sheet 3 of 4
				chr	B. BARUFFALO	5/25/91		size
				appd	B. BARUFFALO	5/25/91		A3
sheet	revision							type
index	sheet							Product Customer Drawing

PRODUCT NUMBER
SEE TABLE

UNREELING
DIRECTION

REFERENCE ONLY

TAPE WIDTH'S 32mm AND ABOVE HAS BOTH FEED TRACKS,
BELOW 32mm HAS TOP FEED TRACK ONLY.



SECTION A-A

SECTION B-B

mat'l. code				surface	tolerance	projection	product family
-				ISO 1302	ISO 406		RIB CAGE
tr				tolerances unless otherwise specified			title
AG	ecp no	dr	date	linear	xx ±.01/.3	INCH/MM	.050cc VERT. CARD CONN.
				angles	xxx ±.005/.13		SURF. MT. W/LOC. FEATURES
				0°±2°	xxxx ±.0020/.050	scale 3:1	dwg no
				dr	M. CLOUSER 5/25/91		sheet 4 of 4 size
				engr	B. BARUFFALO 5/25/91		87023 A3
				chr	B. BARUFFALO 5/25/91		
				appd	B. BARUFFALO 5/25/91		type
sheet	revision						Product Customer Drawing
index	sheet						