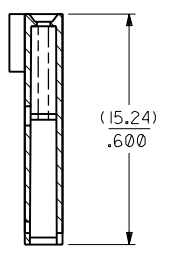
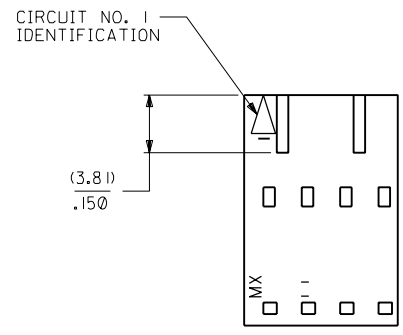
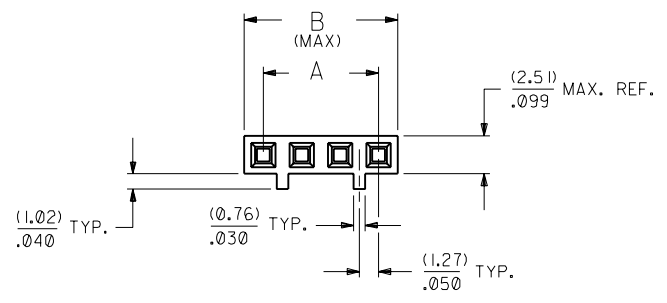


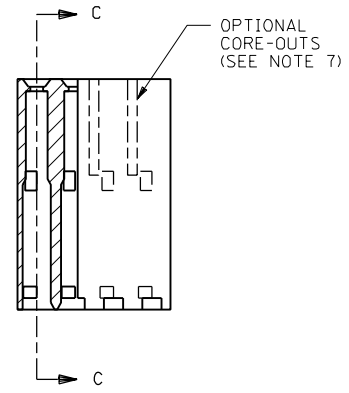
NOTES:

- 1) MATERIAL: G.F. POLYESTER
- 2) HOUSING TO BE USE WITH TERMINAL PT. NO. 70058-****
- 3) SEE CHART FOR CIRCUIT SIZES.
- 4) TO BE USED WITH (0.64)/.025 SQ. OR RD. PINS.
- 5) PARTS STACKABLE END TO END ON (2.54)/.100 CENTERS.
- 6) REFER TO PRODUCT SPECIFICATION NO. : P.S.-70058
- 7) PARTS MAY OR MAY NOT BE SUPPLIED WITH EXTERIOR CORE-OUT CONFIGURATION. SEE DWG. SD-70066-**** FOR OPTIONAL HOUSING DETAILS.
- 8) PACKAGE PER PK-70066-100.

OPTION "C"



SECTION C-C



CKT. SIZE	EDP. NO.	ENG. NO.	A	B
2	50-57-9202	70066-0071	(2.54)/.100	(5.05)/.199
3	50-57-9203	70066-0072	(5.08)/.200	(7.59)/.299
4	50-57-9204	70066-0073	(7.62)/.300	(10.13)/.399
5	50-57-9205	70066-0074	(10.16)/.400	(12.67)/.499
6	50-57-9206	70066-0075	(12.70)/.500	(15.21)/.599
7	50-57-9207	70066-0076	(15.24)/.600	(17.75)/.699
8	50-57-9208	70066-0077	(17.78)/.700	(20.29)/.799
9	50-57-9209	70066-0078	(20.32)/.800	(22.83)/.899
10	50-57-9210	70066-0079	(22.86)/.900	(25.37)/.999
11	50-57-9211	70066-0080	(25.40)/1.000	(27.91)/1.099
12	50-57-9212	70066-0081	(27.94)/1.100	(30.45)/1.199
13	50-57-9213	70066-0082	(30.48)/1.200	(32.99)/1.299
14	50-57-9214	70066-0083	(33.02)/1.300	(35.53)/1.399
15	50-57-9215	70066-0084	(35.56)/1.400	(38.07)/1.499
16	50-57-9216	70066-0085	(38.10)/1.500	(40.61)/1.599
17	50-57-9217	70066-0086	(40.64)/1.600	(43.15)/1.699
18	50-57-9218	70066-0087	(43.18)/1.700	(45.69)/1.799
19	50-57-9219	70066-0088	(45.72)/1.800	(48.23)/1.899
20	50-57-9220	70066-0089	(48.26)/1.900	(50.77)/1.999
21	50-57-9221	70066-0090	(50.80)/2.000	(53.31)/2.099
22	50-57-9222	70066-0091	(53.34)/2.100	(55.85)/2.199
23	50-57-9223	70066-0092	(55.88)/2.200	(58.39)/2.299
24	50-57-9224	70066-0093	(58.42)/2.300	(60.93)/2.399
25	50-57-9225	70066-0094	(60.96)/2.400	(63.47)/2.499

DIMENSIONS SHOWN (METRIC) INCH UNLESS OTHERWISE SPECIFIED TOLERANCES: ANGULAR ± 1/2°		REVISIONS PER ECR# U10967 8-8-91 MJM/MGB	
REVISIONS PER ECR# U80051 3-27-89 MCB		REDRAWN ON CAD ECR # 9120 5/5/86 WZ	
ADD PKG NOTE ECN UDT2000-0468 SCHAFFER 99/12/1		REVISIONS PER ECR# U10967 8-8-91 MJM/MGB	
REVISIONS PER ECR# U80051 3-27-89 MCB		REDRAWN ON CAD ECR # 9120 5/5/86 WZ	
DRAFT WHERE APPLICABLE MUST REMAIN WITHIN DIMENSIONS		DRAFT WHERE APPLICABLE MUST REMAIN WITHIN DIMENSIONS	
DRWG. BY: RS APP'D. BY: RL	CHK'D. BY: WZ SCALE: 4:1	FILE NAME: 700660071 THIS DRAWING CONTAINS INFORMATION THAT IS PROPRIETARY TO MOLEX INC. AND SHOULD NOT BE USED WITHOUT WRITTEN PERMISSION.	
TITLE: HOUSING CONNECTOR (2.54)/.100 GRID STACKABLE SINGLE ROW		SHEET NO. 1 DATE 03/26/86	
MOLEX INCORPORATED LITTLE ROCK, AR, U.S.A.		SD-70066-0071-0094	