

FEATURES AND SPECIFICATIONS

Features and Benefits

- Locking tang provides terminal retention to housing

Reference Information

Packaging: Reel or bag
 Use With: 35507, 51065 and 87369 housings
 Designed In: Millimeters

**molex® 2.00mm (.079") Pitch
 Wire-to-Board
 Crimp Terminal**

50212

Electrical

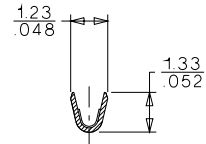
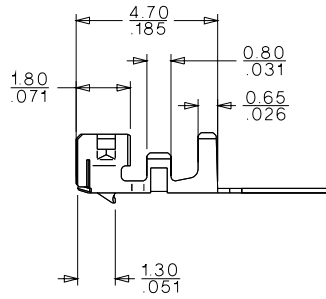
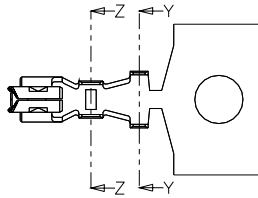
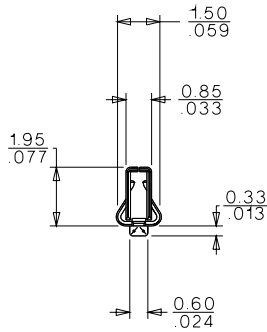
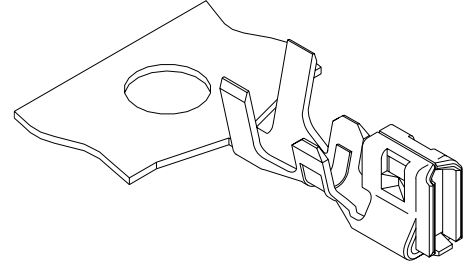
Voltage: 125V
 Current:

AWG	24	26	28	30
Amperes	2.0	1.5	1.0	0.5

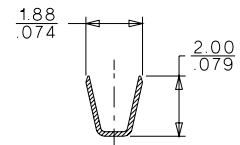
Contact Resistance: 20mΩ max.
 Dielectric Withstanding Voltage: 500V AC/1 min.
 Insulation Resistance: 1000 MΩ min.

Physical

Contact: Phosphor Bronze
 Plating: Tin
 Wire Range: 24 to 30 AWG
 Insulation Range: 1.40mm dia. max.
 Strip Length: 1.3 to 1.8mm
 Temperature: -40 to +105°C



SECTION Z-Z



SECTION Y-Y

ORDERING INFORMATION

Order No.	Terminal
50212-8000	Reel
50212-8100	Bag