

Three-Row Pin Assemblies With One Guide Hole

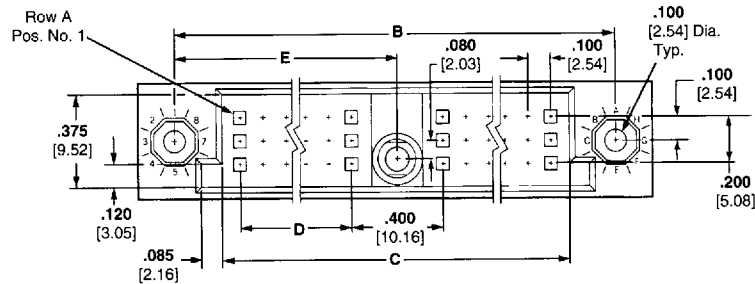
Vertical Posts

Material and Finish:

Housing—Brown glass-filled polyphenylene sulfide

Contacts—Phosphor bronze, plated as follows:

- A** .000030 [0.00076] gold in contact area; tin on posts, with entire contact underplated .000050-.000100 [0.00127-0.00254] nickel
- B** Gold flash over .000050-.000100 [0.00127-0.00254] nickel on entire contact, with .000030 [0.00076] gold in contact area and for .200 [5.08] from tip of wrap-type post

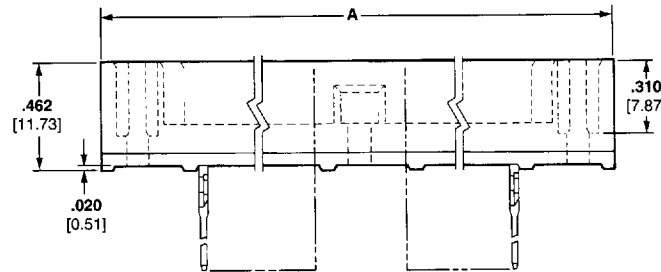


Related Product Data:

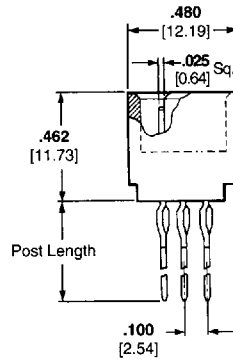
Mateable Connectors—pages 31, 82

Accessories:

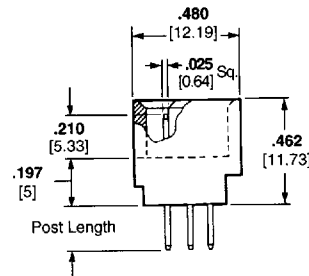
- Shrouds**—page 44
- Guide/Power Pins**—pages 46, 47
- Static Discharge Guide/Power Pins**—page 46
- Guide Pins**—page 48
- Keys**—page 49
- Jackscrews**—pages 50, 51
- PCB Hole Layouts**—page 57
- Application Tooling**—pages 61-65
- MFBL Capabilities**—pages 76, 77
- Technical Documents** (page 112):
AMP Product Specifications 108-9063, 108-16
AMP Application Specification 114-9008
AMP Instruction Sheets 408-2636, 408-6626, 408-6909, 408-6927, 408-9007, 408-9038, 408-9142, 408-9185



Note: Housing with center mounting is recommended for assemblies having 75 contacts or more per row.



ACTION PIN Posts



Solder Posts

Three-Row Pin Assemblies With One Guide Hole (Continued)

No. of Pos.	Dimensions					Post Length	Contact Finish	Part Numbers*	
	A	B	C	D	E			ACTION PIN Posts	Solder Posts
240	9.050 229.87	8.750 222.25	8.350 212.09	3.900 99.06	4.375 111.12	.533	A	533513-1	—
						13.54	B	533434-1	—
						.250	A	533294-1	—
						6.35			
276	10.250 260.35	9.950 252.73	9.550 242.57	4.500 114.30	4.975 126.36	.190	A	—	532931-1
						4.83			
						.733	A	532919-3	—
						18.62			
294	10.850 275.59	10.550 267.97	10.150 257.81	4.800 121.92	5.275 133.98	.533	A	533513-3	—
						13.54	B	533434-3	—
						.250	A	533294-3	—
						6.35			
312	11.450 290.83	11.150 283.21	10.750 273.05	5.100 129.54	5.575 141.60	.190	A	—	532931-3
						4.83			
						.733	A	532919-4	—
						18.62			
330	12.050 306.07	11.750 298.45	11.350 288.29	5.400 137.16	5.875 149.22	.533	A	533513-4	—
						13.54	B	533434-4	—
						.250	A	533294-4	—
						6.35			
366	13.250 336.55	12.950 328.93	12.550 318.77	6.000 152.40	6.475 164.46	.190	A	—	532931-4
						4.83			
						.733	B	533296-8	—
						18.62			
366	13.250 336.55	12.950 328.93	12.550 318.77	6.000 152.40	6.475 164.46	.533	A	533513-5	—
						13.54	B	533434-5	—
						.250	A	533294-5	—
						6.35			
366	13.250 336.55	12.950 328.93	12.550 318.77	6.000 152.40	6.475 164.46	.190	A	—	532931-5
						4.83			
						.733	A	532919-6	—
						18.62			
366	13.250 336.55	12.950 328.93	12.550 318.77	6.000 152.40	6.475 164.46	.533	A	533513-6	—
						13.54	B	533434-6	—
						.250	A	533294-6	—
						6.35			
366	13.250 336.55	12.950 328.93	12.550 318.77	6.000 152.40	6.475 164.46	.190	A	—	532931-6
						4.83			
						.733	A	532919-6	—
						18.62			
366	13.250 336.55	12.950 328.93	12.550 318.77	6.000 152.40	6.475 164.46	.533	A	533513-6	—
						13.54	B	533434-6	—
						.250	A	533294-6	—
						6.35			
366	13.250 336.55	12.950 328.93	12.550 318.77	6.000 152.40	6.475 164.46	.190	A	—	532931-6
						4.83			
						.733	B	533296-8	—
						18.62			
366	13.250 336.55	12.950 328.93	12.550 318.77	6.000 152.40	6.475 164.46	.533	A	533513-8	—
						13.54	B	533434-8	—
						.250	A	533294-8	—
						6.35			
366	13.250 336.55	12.950 328.93	12.550 318.77	6.000 152.40	6.475 164.46	.190	A	—	532931-8
						4.83			
						.733	B	533296-8	—
						18.62			

*Connectors with other post style/length/plating combinations can be made available, consult AMP.

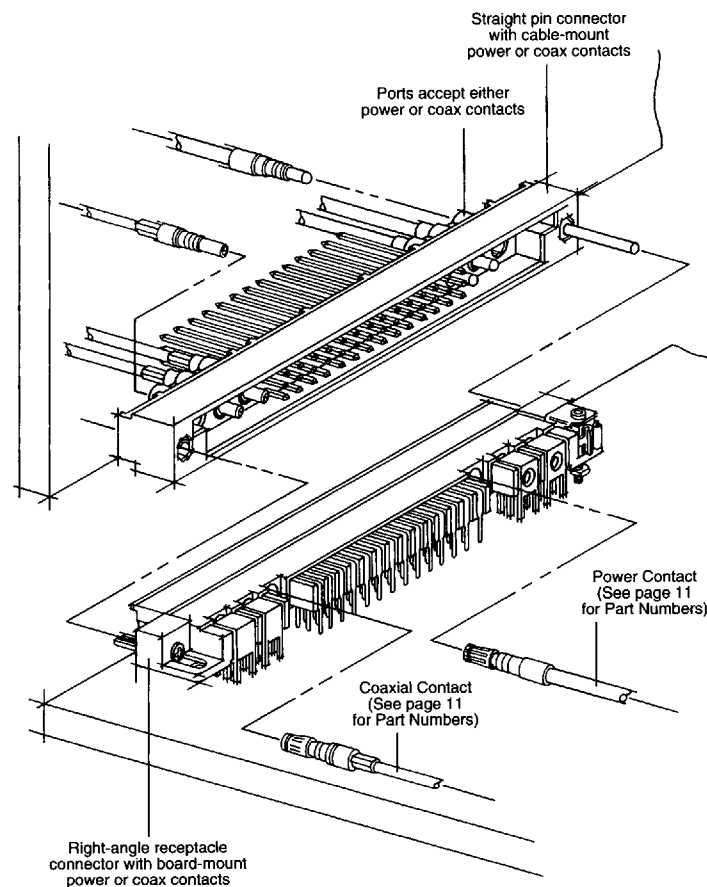
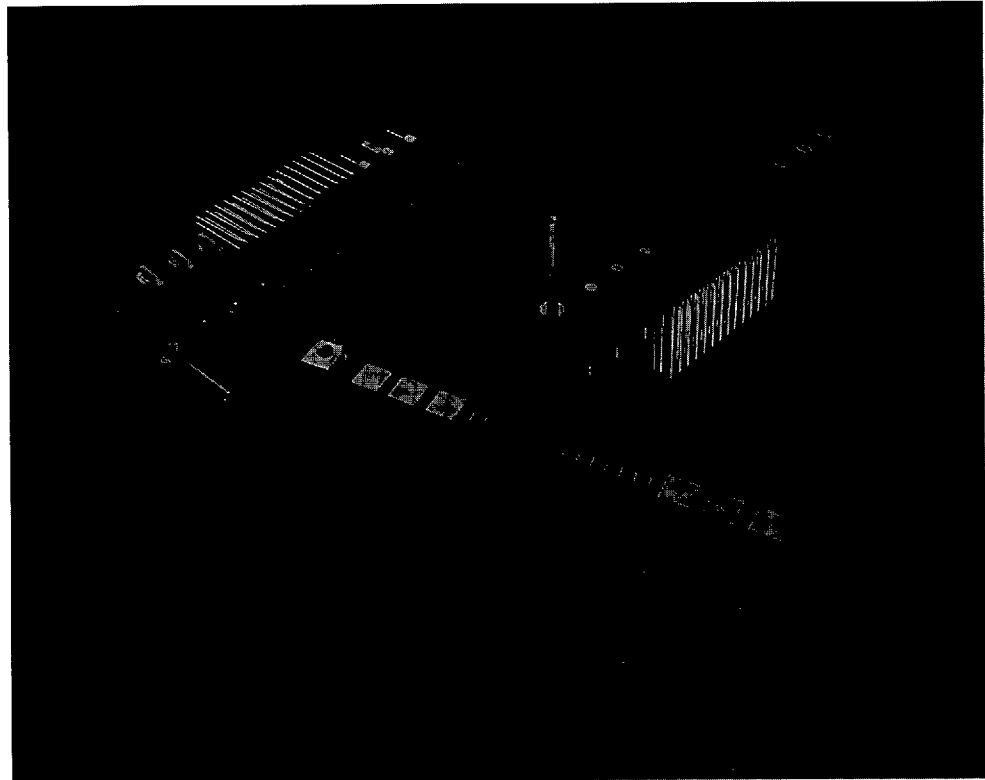
AMP-HDI Hybrid Connectors

Unusual Convenience in High-Density Applications

Hybrid versions of the state-of-the-art AMP-HDI connector provide an easy blend of signal with power or coax. With signal contacts on the standard .100 x .100 [2.54 x 2.54] grid, these hybrid connectors feature ports that accept either power or coax contacts for board-mount and cable-mount applications. The connectors are compatible with all standard AMP-HDI connector hardware, application tooling and low power guide pins, and possess all the high performance features of their standard counterparts.

The durability of these hybrids has been tested to 250 cycles, and they have an operating temperature of -65°C to 125°C. Power contacts handle up to 30 amperes each (depending upon application) and coax contacts maintain a low VSWR of between 1.30 and 1.40, depending on the application.

The connector housing material withstands the high temperatures of vapor phase soldering, and pin assemblies are available with SOLDER PINS or compliant ACTION PIN posts.

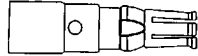


Power and Coaxial Contacts (Size 8) for Three- and Four-Row AMP-HDI Hybrid Connectors

AMP-HDI Connectors,
Hybrid

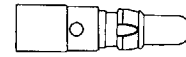
Cable-to-Cable Power Applications

Contacts for Receptacle Assemblies



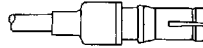
Straight Socket Contact
Part Number 211161-1

Contacts for Pin Assemblies

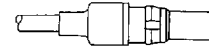


Straight Pin Contact
Part Number 211159-1

Cable-to-Cable Coaxial Applications

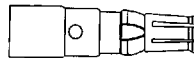


Straight Socket Contact
Part Number 228596-1

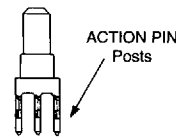


Straight Pin Contact
Part Number 228618-1

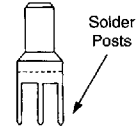
Cable-to-Board Power Applications



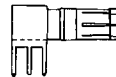
Straight Socket Contact
Part Number 211161-1



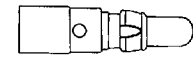
Vertical Pin Contact
Part Number 534135-1*



Vertical Pin Contact
Part Number 532824-1*



Right-Angle Socket Contact
Part Number 532823-1



Straight Pin Contact
Part Number 211159-1

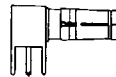
Cable-to-Board Coaxial Applications



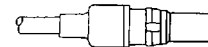
Straight Socket Contact
Part Number 228596-1



Vertical Pin Contact
Part Number 414509-1*

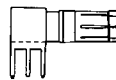


Right-Angle Socket Contact
Part Number 221162-1

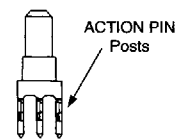


Straight Pin Contact
Part Number 228618-1

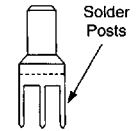
Board-to-Board Power Applications



Right-Angle Socket Contact
Part Number 532823-1 (Gold Solder Tail)
Part Number 532823-2 (Tin-Lead Solder Tail)

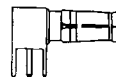


Vertical Pin Contact
Part Number 534135-1*



Vertical Pin Contact
Part Number 532824-1*

Board-to-Board Coaxial Applications



Right-Angle Socket Contact
Part Number 221162-1



Vertical Pin Contact
Part Number 221158-1*

*These contacts are used in square power ports only; all other contacts are used in round power ports.
Extraction Tool No. 58095-2 is used to remove coaxial and power contacts from AMP-HDI hybrid connector housings.

Dimensions are shown for reference purposes only.

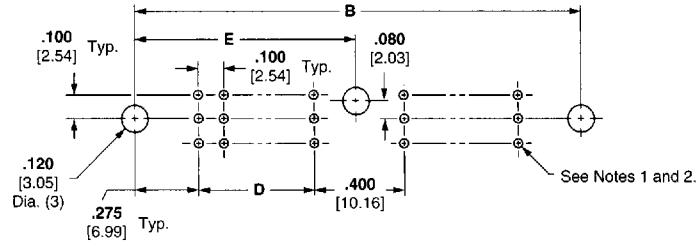
Dimensions are in inches and millimeters unless specified otherwise. Values in brackets are metric equivalents. Chart dimensions are in inches over millimeters.

For drawings, technical data or samples, contact your AMP sales engineer or call the AMP Product Information Center: 1-800-522-6752

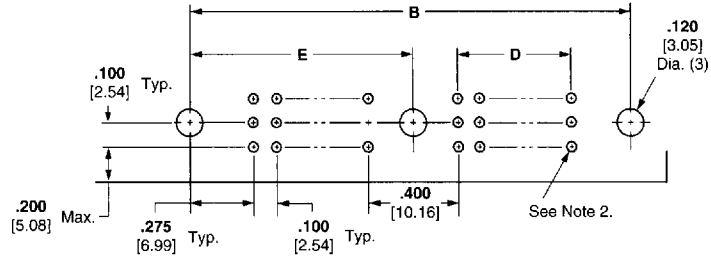
Specifications subject to change. Consult AMP for latest specifications.

Recommended PC Board Hole Layouts (Continued)

Three-Row Connectors With One Guide Hole



**Vertical Pin Assemblies with
ACTION PIN Contacts and Solder Posts**



**Right-Angle Pin and Receptacle
Assemblies with Solder Posts**

- Notes:** 1. ACTION PIN posts require .093 [2.36] min. thick PC board. For ACTION PIN post plated-through hole specifications, see page 60.
2. Plated-through hole diameter for solder posts is .037-.043 [0.94-1.09]; recommended pad diameter is hole diameter plus .020 [0.51].

No. of Pos.	Dimensions		
	B	D	E
240	8.750 222.25	3.900 99.06	4.375 111.12
276	9.950 252.73	4.500 114.30	4.975 126.36
294	10.550 267.97	4.800 121.92	5.275 133.98
312	11.150 283.21	5.100 129.54	5.575 141.60
330	11.750 298.45	5.400 137.16	5.875 149.22
348	12.350 313.69	5.700 144.78	6.175 156.84
366	12.950 328.93	6.000 152.40	6.475 164.46