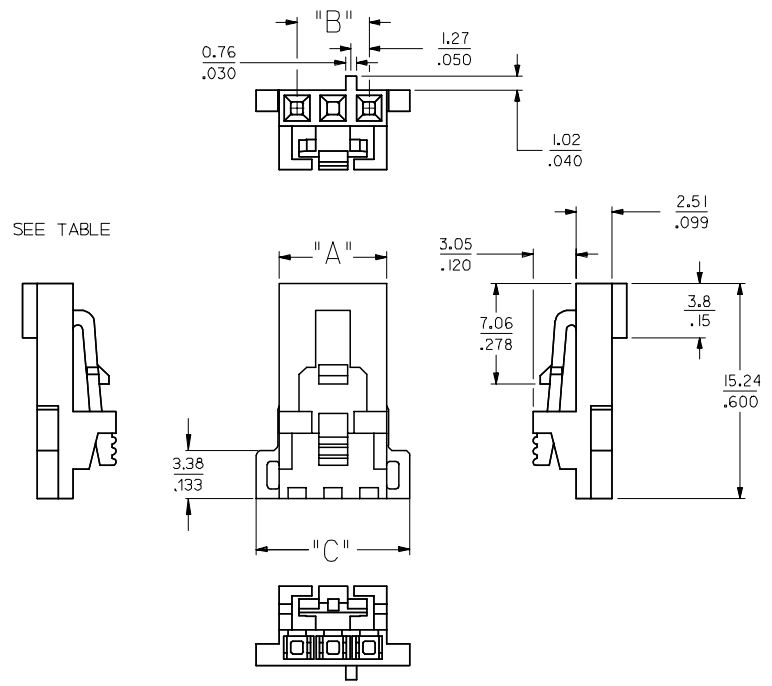
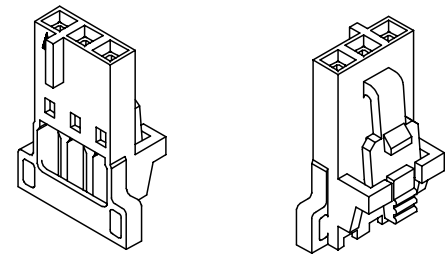
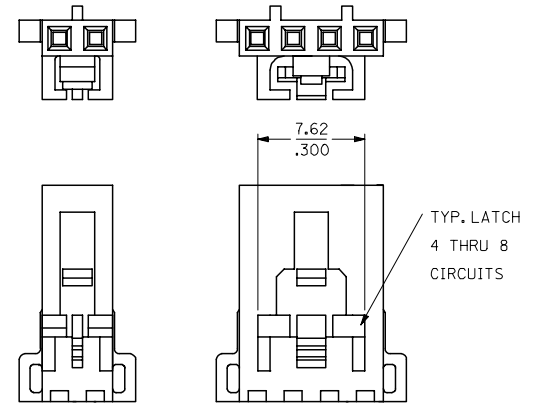


CKT SIZE	EDP. NUMBER	ENG. NUMBER	DIM. 'A'	DIM. 'B'	DIM. 'C'
2	050-57-9702	70066-0386	(5.00) / .197	(2.54) / .100	(8.26) / .325
3	050-57-9703	70066-0387	(7.54) / .297	(5.08) / .200	(10.80) / .425
4	050-57-9704	70066-0388	(10.08) / .397	(7.62) / .300	(13.34) / .525
5	050-57-9705	70066-0389	(12.62) / .497	(10.16) / .400	(15.88) / .625
6	050-57-9706	70066-0390	(15.16) / .597	(12.70) / .500	(18.42) / .725
7	050-57-9707	70066-0391	(17.70) / .697	(15.24) / .600	(20.96) / .825
8	050-57-9708	70066-0392	(20.24) / .797	(17.78) / .700	(23.50) / .925

TERMINAL POSITION ASSURANCE (TPA) OPTION "N"



2 CKT CONFIGURATION 4 THRU 8 CKT CONFIGURATION



- NOTES:
- 1) HOUSING, OPTION "N" FOR USE WITH TERMINAL RETENTION SUPPORT SERIES #73838 AND CONTACT SERIES NUMBERS 70058 AND 71851.
 - 2) REFER TO CHART FOR AVAILABLE CIRCUIT SIZES.
 - 3) MATERIAL: GLASS FILLED POLYESTER, .94V-0, COLOR: BLACK
 - 4) PACKAGE PER PK-70066-100.

ADD'D DIMENSION FCC NO: UCP2007-1403 DRAWN: DANIELLEY 2007/01/09 CHK'D: BARKER 2007/01/15 APPR: MILLER 2007/01/15 REVISIONS	QUALITY SYMBOLS 	GENERAL TOLERANCES (UNLESS SPECIFIED)		DIMENSION STYLE MM/IN		SCALE 4:1	DESIGN UNITS METRIC	THIRD ANGLE PROJECTION	
	4 PLACES ± .010 3 PLACES ± .015 2 PLACES ± .025 1 PLACE ± 0.38 ANGULAR ± 1/2°	mm INCH ± .010 ± .015 ± .025 ± .030 ± .038 ± .038	DRAWN BY RE ISDORF	DATE 12/23/1998	CHECKED BY RE ISDORF	DATE 12/23/1998	TITLE HOUSING, SL CRIMP FOR TERMINAL POSITION ASSURANCE, SALES DRAWING		
DRAFT WHERE APPLICABLE MUST REMAIN WITHIN DIMENSIONS		SEE TABLE		APPROVED BY BRINKMAN		DATE 12/23/1998	MATERIAL NO. SD-70066-386		SHEET NO. 1 OF 1
THIS DRAWING CONTAINS INFORMATION THAT IS PROPRIETARY TO MOLEX INCORPORATED AND SHOULD NOT BE USED WITHOUT WRITTEN PERMISSION									