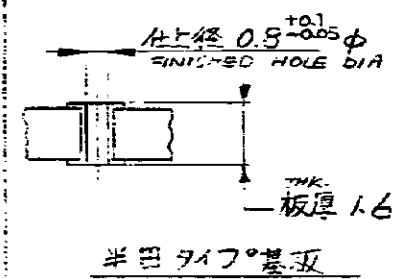
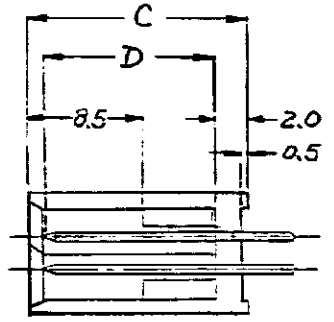
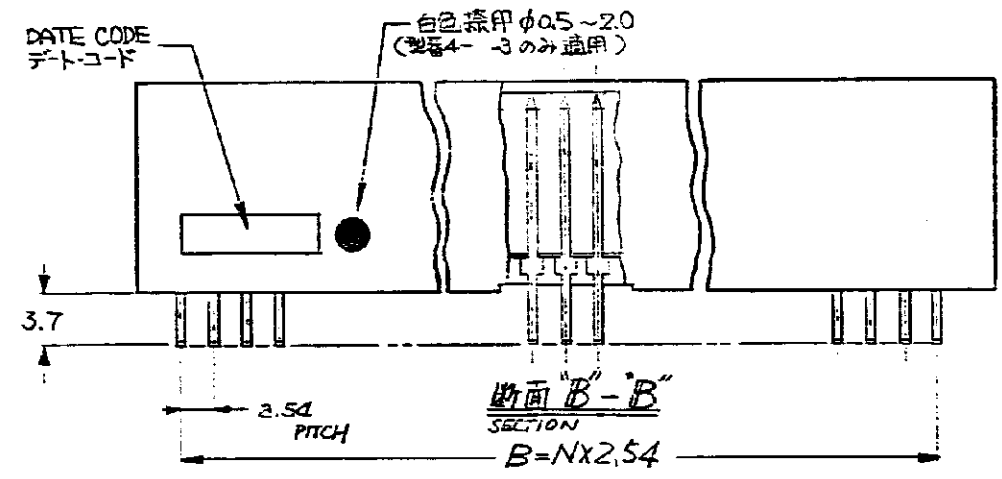
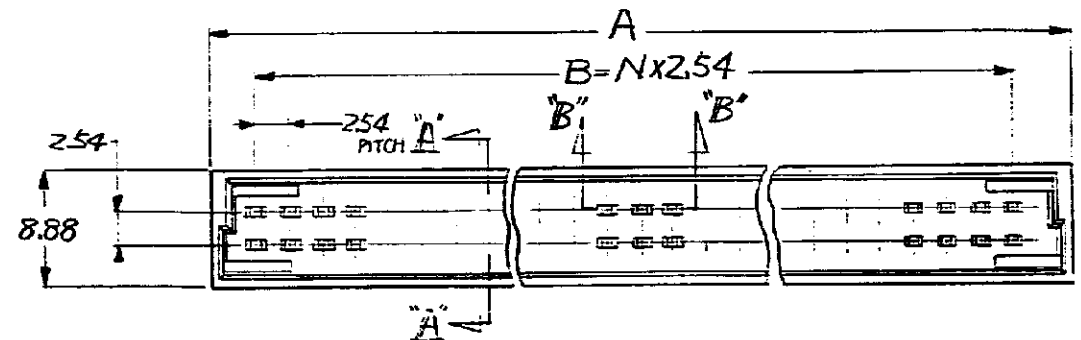


© 1985 AMP (Japan) Ltd. ALL RIGHTS RESERVED. AMP PRODUCTS COVERED BY PATENTS AND OR PATENTS PENDING.



REV.	REVISION RECORD	DR.	CHK.	DATE
E	REVISED (FJDO-0207-03)	K.R.	S.M.	19MAR '84
D	追加 J0981	J.S.	K.S.	19FEB '87
C	追加 3592	K.S.	J.S.	19FEB '86
B	変更 385-2272	K.S.	J.S.	19FEB '85
A	REDRAWN WITH CHANGE	K.S.	J.S.	19FEB '85

NOTE

- HSG MATERIAL; PBT (GLASS) UL94V-0, 3LK
- CONT MATERIAL; CA725 (Cu-Ni-Sn ALLOY)
- FINISH; CONTACT AREA --- 1.3μ MIN. NICKEL UNDER PLATING, 0.2μ MIN GOLD PLATING
POST --- 1.3μ MIN NICKEL UNDER PLATING, 2μ MIN TIN PLATING
- ALL DIMENSIONS SHOWN ARE FOR REFERENCE ONLY
- PRODUCT SPEC; 108-5197

△ FINISH ON CONTACT AREA OF P13-04-3; 1.3μ MIN. NICKEL UNDER PLATING, 0.5μ MIN. GOLD PLATING. ANOTHER PLATING SAME AS NOTE 3.

注記

- ハウジング材料; ガラス入 PBT UL94-V-0 黒
 - コンタクト材料; CA725 (Cu-Ni-Sn合金)
 - メッキ仕様;
 - コネクタ嵌合部: 1.3μ最小の下地Niの上
 - トの2μ最小の金メッキ
 - ポスト部: 1.3μ最小の下地Niの上に
 - 錫メッキ(2μ最小)
 - 全ての寸法は参考寸法である。
 - 製品規格 108-5197
- △ 3-0,4-3のコンネクタ嵌合部のめっき仕様; 1.3μ最小の下地Niの上に0.5μ最小の金メッキ, その他は3の仕様と同じ

△ 7.8	10.5	48.26	55.9	19	40	4-	-3
		40.64	48.3	16	34	4-	-2
		30.48	38.1	12	26	4-	-1
		73.66	81.3	29	60	4-	-0
		60.96	68.6	24	50	3-	-9
		48.26	55.9	19	40	3-	-8
11.4	16.1	35.56	43.2	14	30	3-	-7
		40.64	48.3	16	34	3-	-6
		30.48	38.1	12	26	3-	-5
		73.66	81.3	29	60	3-	-4
		60.96	68.6	24	50	3-	-3
		48.26	55.9	19	40	3-	-2
		35.56	43.2	14	30	3-	-1
△ 5.8	10.5	48.26	55.9	19	40	3-	-0
		40.64	48.3	16	34	2-	-9
		30.48	38.1	12	26	2-	-8
		73.66	81.3	29	60	2-	-7
		60.96	68.6	24	50	2-	-6
		48.26	55.9	19	40	2-	-5
13.4	16.1	35.56	43.2	14	30	2-	-4
		40.64	48.3	16	34	2-	-3
		30.48	38.1	12	26	2-	-2
		73.66	81.3	29	60	2-	-1
		60.96	68.6	24	50	1-	-0
		48.26	55.9	19	40	1-	-9
		35.56	43.2	14	30	1-	-8
7.8	10.5	35.56	43.2	14	30	1-173	-7

MATERIAL	TOLERANCE = 0.25 EXCEPT AS NOTED	tyco Electronics	Tyco Electronics AMP K.K. Kawasaki, Japan
FINISH	DR. 1-30-85 CK. K. Sawada	NAME POST HEADER, STACKING CONN ポスト・ヘッド スタッキングコネクタ	
	DE 11-30-85 APP 1-30-85	SIZE A3 J	LOC © 173/46
		SCALE	REV. E SHEET 1 OF 1