
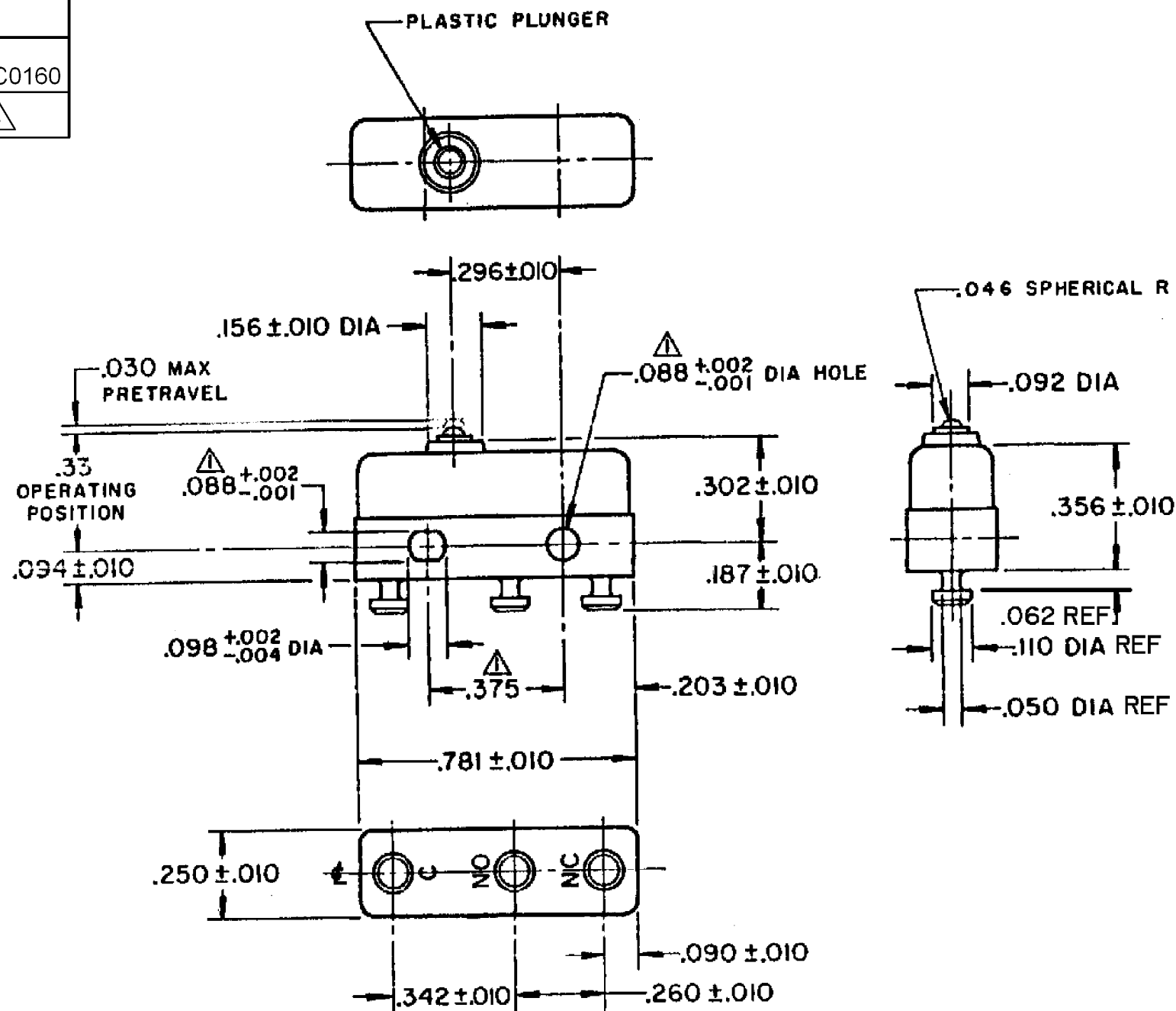




HONEYWELL PART NUMBER
41SM1-T
PRODUCT CODE TYC0160
FAA-PMA 

REV	DOCUMENT	CHANGED BY	CHECK
11	0038112	KVS 04JUN08	ASD






NOTES


- -MOUNTING HOLES WILL ACCEPT PINS OR SCREWS OF .087 MAX DIA ON .375 ±.002 CENTERS
- 2-TERMINALS ARE PLATED FOR SOLDERING
- 3-SWITCH WILL WITHSTAND TEMPERATURE OF 250° F
- -FOR MANUFACTURING DETAIL SEE ASSEMBLY DRAWING 41SM1-T FOR FAA-PMA

RELEASE NO. SR - 11353

REPLACES -

CHARACTERISTICS
OPERATING FORCE - - - - 3 - 5 OZ
RELEASE FORCE - - - - 1 OZ MIN
DIFFERENTIAL TRAVEL - - - .004 MAX
OVERTRAVEL - - - - - .005 MIN

ELECTRICAL DATA	
CONTACT ARRANGEMENT SPDT	
APPROVALS	KEMA, CE 11A 250V ~ T85 1E4 5A 30 Vdc T85 1E4 
	UL, CSA 11A 1/4 HP 125 250 VAC 5A 30 VDC 1/2 A 125 VDC   BRAND L 212
	AVIATION FAA - PMA BRAND

DESIGN UNITS: INCH
TOLERANCES UNLESS NOTED:
NO PLACE X ±
ONE PLACE .X ±
TWO PLACE .XX ±
THREE PLACE .XXX ±
FOUR PLACE .XXXX ±
ANGLES ±
THIRD ANGLE PROJECTION 

DRAWN	VK	24 OCT 07
CHECK	RJ	24 OCT 07
THIS DRAWING COVERS A PROPRIETARY ITEM AND IS THE PROPERTY OF HONEYWELL. THIS DRAWING IS NOT TO BE COPIED OR USED WITHOUT THE PERMISSION OF HONEYWELL.		
INTERPRET PER ANSI Y14.5M-1982 OTHER HONEYWELL ENGINEERING STANDARDS MAY APPLY		
RASTER		

Honeywell			
TITLE SWITCH - BASIC			
SIZE	TYPE	DRAWING NAME	REV
B	I	41SM1-T	11
SCALE	-	WEIGHT .006 LB MAX	SHEET 1 OF 1