

# BNC (Isolated) Style Connector (Panel Mounting Type)

## 31 Series



### FEATURES

- ◆ Panel mounting type BNC style receptacle connector.
- ◆ The outer conductor and mounting panel are isolated.
- ◆ The ground contact is installed along the outer conductor and united with insulator adjacent to the contact.

### APPLICATIONS

Computer, Communication and Medical equipments

### CONFORMING STANDARD

JIS-C-5412, MIL-C-39012

### SPECIFICATIONS

Characteristic Impedance	Unmatched
Dielectric Withstanding Voltage	1500V AC(r.m.s.) for 1 minute
Insulation Resistance	5000M $\Omega$ Min. at 500V DC
Contact Resistance	3m $\Omega$ max. (31-10-CF, 31-10-CAu-CF) 5m $\Omega$ max. (31-10T-D2)

\* The specifications are typical but may not apply to all connectors. Please check the specifications on each item with its drawing from us when you use.

### MATERIAL/FINISH



Item	Material / Finish
Contact(Female)	Copper Alloy / Ag or Au Plating
Outer Conductor	Zinc Alloy Diecast / Ni Plating
Insulator	PPO Resin (UL94V-0) / White

© Specifications and/or dimensions in this catalog are subject to change without notice.  
Your checking the latest specifications with our drawings would be highly appreciated.

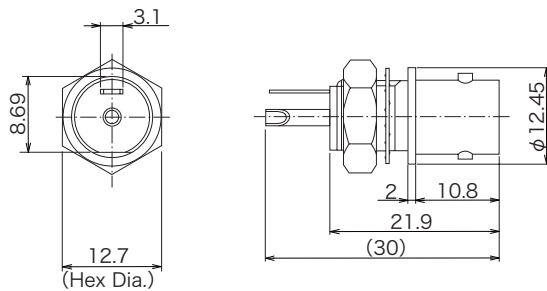
# ► BNC Style Receptacle

## 31-10-CF 31-10-CAu-CF

Round Pin Contact



Part Number	Contact	Outer Conductor
31-10-CF	Ag Plating	Ni Plating
31-10-CAu-CF	Au Plating	Ni Plating



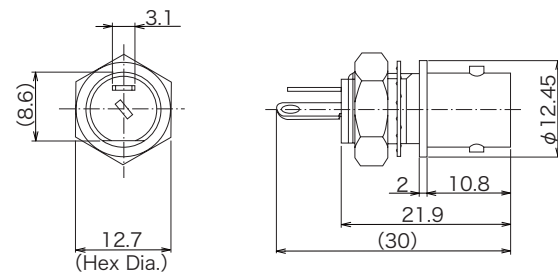
Panel Thickness : 4.3mm max.

## 31-10T-D2

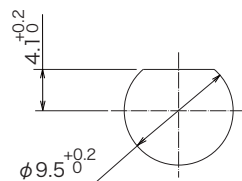
Tuning fork Contact  
(Low-cost Type : Press Contact)



Part Number	Contact	Outer Conductor
31-10T-D2	Ag Plating	Ni Plating



Panel Thickness : 4.3mm max.



Panel Mounting Dimensions

(Note) When mounting this connector as above, the stud pins are located up and below.