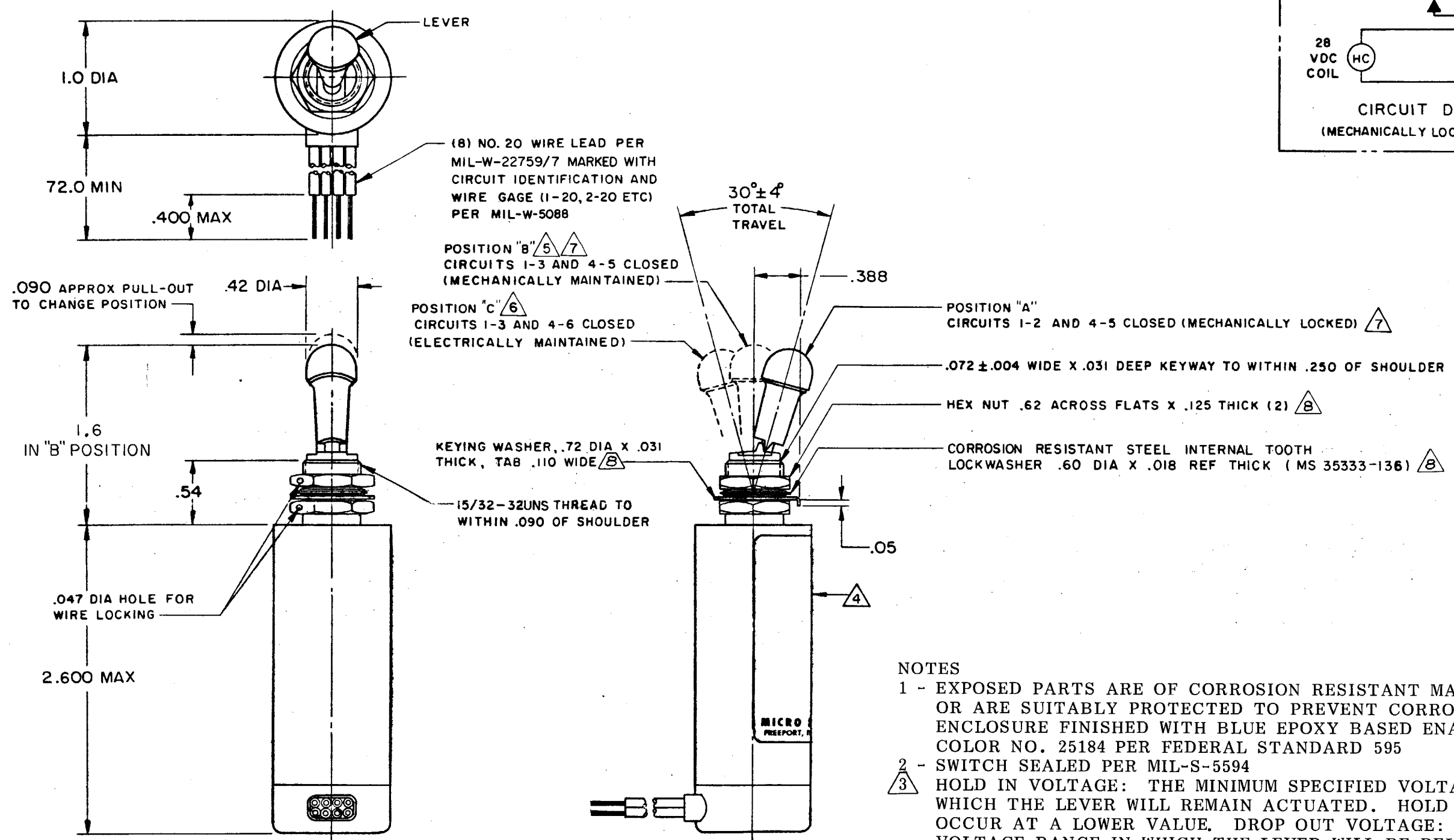
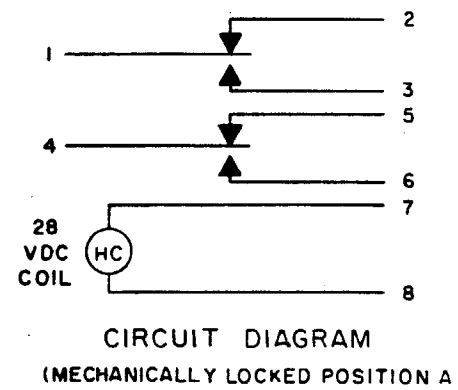


**MICRO SWITCH**

A DIVISION OF MINNEAPOLIS-HONEYWELL REGULATOR COMPANY  
FREEPORT, ILLINOIS  
FED. MFR. CODE 91929

**SWITCH - TOGGLE  
(MAGNETIC HOLD-IN)**

CATALOG LISTING  
**27ET2-6-P**



- NOTES**
- 1 - EXPOSED PARTS ARE OF CORROSION RESISTANT MATERIAL OR ARE SUITABLY PROTECTED TO PREVENT CORROSION ENCLOSURE FINISHED WITH BLUE EPOXY BASED ENAMEL COLOR NO. 25184 PER FEDERAL STANDARD 595
  - 2 - SWITCH SEALED PER MIL-S-5594
  - 3 - HOLD IN VOLTAGE: THE MINIMUM SPECIFIED VOLTAGE AT WHICH THE LEVER WILL REMAIN ACTUATED. HOLD IN MAY OCCUR AT A LOWER VALUE. DROP OUT VOLTAGE: THE VOLTAGE RANGE IN WHICH THE LEVER WILL BE RELEASED
  - 4 - CIRCUIT IDENTIFICATION IS SHOWN ON SWITCH
  - 5 - ENERGIZING THE SOLENOID WILL NOT BREAK CIRCUITS 1-3 AND 4-5
  - 6 - CIRCUITS 1-3 AND 4-6 CAN BE BROKEN MANUALLY
  - 7 - CONTACTS TRANSFER AS LEVER PASSES OVER UPPER FLAT PORTION OF LOCK-OUT PROTRUSION
  - 8 - HARDWARE MAY BE FURNISHED UNASSEMBLED PER MIL-S-5594

M27ET2-6-P  
 DRAWING NUMBER  
 ISSUE  
 REVISIONS  
 A CORR  
 J A H  
 25 SEP 72  
 B PR-4893  
 R E R  
 30 APR 75  
 C CO58196  
 K P K  
 3 FEB 77  
 D CO  
 50162  
 W J M  
 6 OCT 81  
 E CO51725-E  
 R J H  
 25 JAN 83  
 F CO53400  
 K A G  
 14 JUL 83  
 G CO53825  
 J A P  
 14 SEPT 83  
 H CO54089  
 J A P  
 8 DEC 83  
 J CO55800  
 T S K  
 31 AUG 84  
 D B W 20 APR 72  
 DRAWN  
 CHECK  
 L S W 20 APR 72  
 CHECK  
 PR-4893  
 RELEASE NO.

THIS DRAWING COVERS A PROPRIETARY ITEM AND IS THE PROPERTY OF MICRO SWITCH, A DIVISION OF MINNEAPOLIS-HONEYWELL REGULATOR CO. THIS DRAWING IS NOT TO BE COPIED OR USED WITHOUT THE APPROVAL OF MICRO SWITCH.

CHARACTERISTICS	ELECTRICAL DATA	SCALE FULL	
SOLENOID RATING AT 20° C	CONTACT ARRANGEMENT S P D T (2)	DO NOT SCALE PRINT	
STEADY STATE LIMITS - - - - 20-29 VDC	RATING IN AMPERES	UNLESS OTHERWISE SPECIFIED DIMENSIONS ARE IN INCHES <b>TOLERANCES ARE:</b>	
HOLD IN - - - - - 15 VDC			SEA LEVEL
DROP OUT - - - - - 0-15 VDC	INRUSH RES IND MOTOR		INRUSH RES IND MOTOR
COIL RESISTANCE - - - - - 220 OHM MIN	28 VOLTS DC		7 2
OPERATING FORCE - - - - - 7 LBS MAX			
OVERRIDE FORCE AT 29 VDC - - - - 10 LBS MAX			
			WEIGHT 14.0 OZ MAX