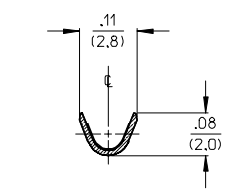
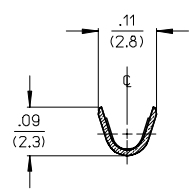
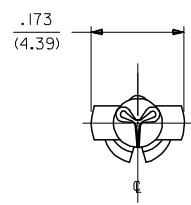
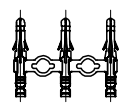


PART NO.	ENG. NO.
02-09-2136	2870-(P90)I
02-09-2137	2870-(P90)IL
02-09-2138	2870-(P90)II

CHAIN FORM
FULL SCALE



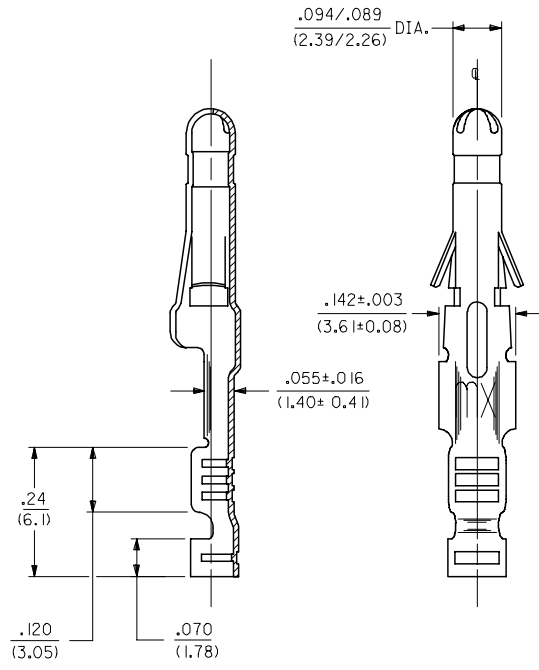
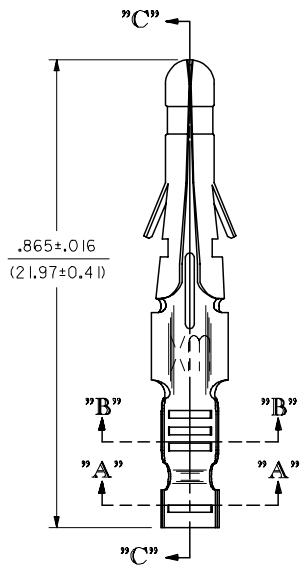
SECTION "A-A"

SECTION "B-B"

LEGEND

2870-(****)*

- P = PREPLATE
- BLANK = POSTPLATE
- FORM BLANK = CHAIN
- L = LOOSE
- I = WITH PAPER INTERLEAF
- FINISH CODE (SEE NOTE 2)



SECTION "C-C"

NOTES:

1. MATERIAL: CARTRIDGE BRASS
2. FINISH:
901 - HOT TIN DIP .000020/(0.00051) MIN.
3. PRODUCT SPECIFICATION: PS-02-09
4. TERMINAL FOR USE WITH .093/(2.36) SERIES HOUSINGS AND WILL ACCEPT 22 THRU 24 AWG WIRE.
5. INSERTION FORCE: 3.5 LBS. MAX. WHEN TERMINAL IS INSERTED INTO AN .093/(2.36) SERIES HOUSING.
6. RETENTION: 20 LBS. MIN. FROM HOUSING.

CORRECT DIMS. EC NO: UCP2005-2499 DRAWN: JONE 2005/07/06 CHKD: ADERR 2005/07/13 APPR: FSM TH 2005/07/14 REV: B1	DESCRIPTION QUALITY SYMBOLS ◻=0 ◻=0	GENERAL TOLERANCES (UNLESS SPECIFIED)		DIMENSION STYLE IN/MM		SCALE 6:1	DESIGN UNITS INCH	THIRD ANGLE PROJECTION	
		4 PLACES ± --- ± ---	mm	INCH	DRAWN BY	DATE	CRIMP TERMINAL, MALE .093/(2.36) DIA. FOR 22 THRU 24 AWG WIRE		
		3 PLACES ± --- ± .010			GWC	6/12/92			
		2 PLACES ± 0.25 ± .014			CHECKED BY	DATE	MOLEX INCORPORATED		
1 PLACE ± 0.35 ± ---			RW	6/12/92					
ANGULAR ±1/2°		APPROVED BY		DATE	MATERIAL NO. DOCUMENT NO. SHEET NO.				
DRAFT WHERE APPLICABLE MUST REMAIN WITHIN DIMENSIONS		GWF		6/12/92	SEE CHART		SD-2870-* 1 OF 1		
THIS DRAWING CONTAINS INFORMATION THAT IS PROPRIETARY TO MOLEX INCORPORATED AND SHOULD NOT BE USED WITHOUT WRITTEN PERMISSION									