

## For SD Memory Card SCDA Series

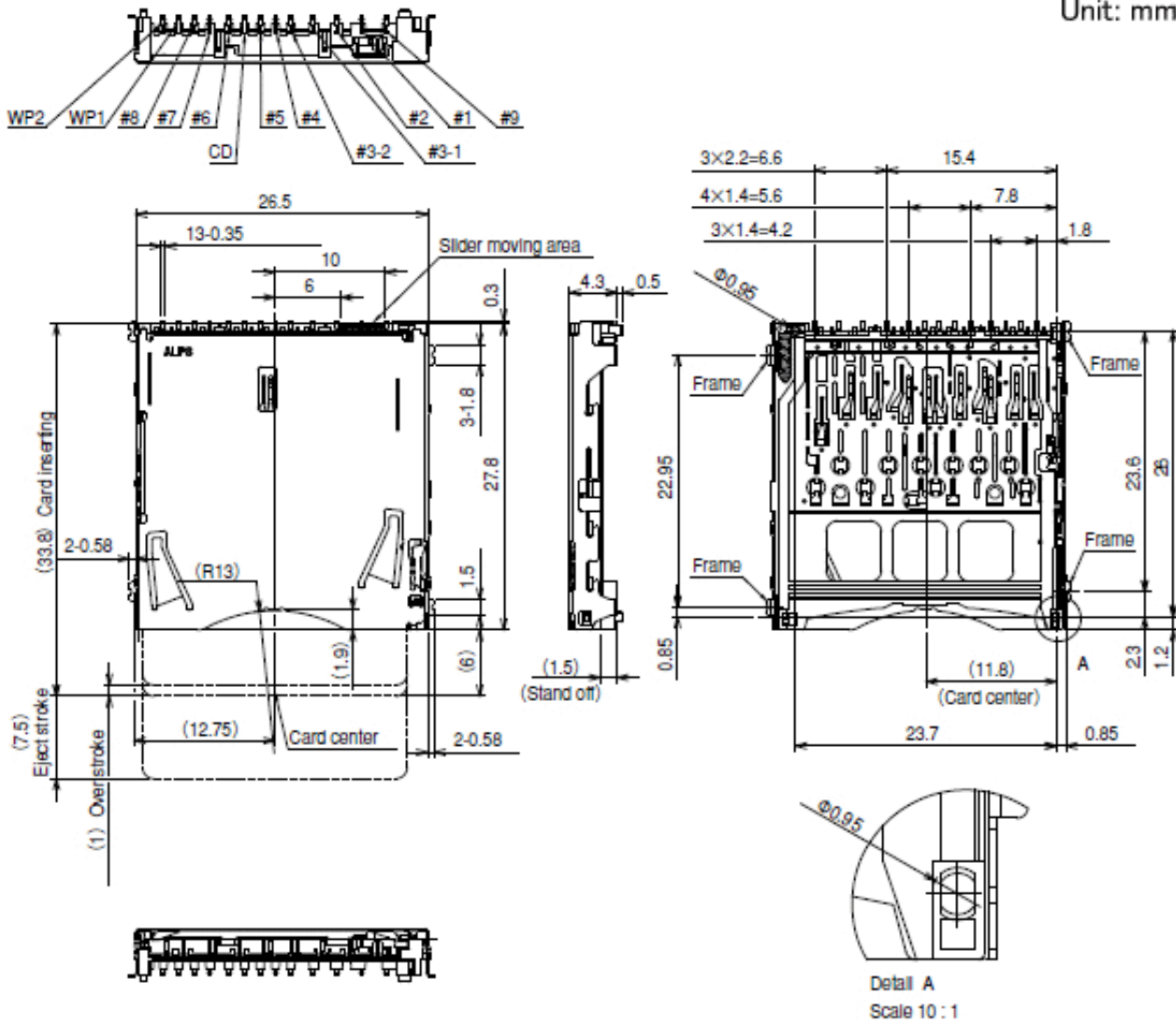
|                                 |                                       |            |
|---------------------------------|---------------------------------------|------------|
| Part number                     | <b>SCDABA0801</b>                     |            |
| Applicable media                | SD Memory Card<br>MultiMediaCard™     |            |
| Media ejection structure        | Push-push type                        |            |
| Mounting type                   | Surface mounting type                 |            |
| Mounting style                  | Standard mount                        |            |
| Features                        | Outer tail<br>Card eject stroke 7.5mm |            |
| Stand-off                       | 1.5mm                                 |            |
| Minimum order unit (pcs.)       | 350                                   |            |
| Operating temperature range     | -25°C to +60°C                        |            |
| Voltage proof                   | 100V AC 1 minute                      |            |
| Insulation resistance (Initial) | 1,000MΩ min.                          |            |
| Contact resistance (Initial)    | Connector contacts                    | 100mΩ max. |
|                                 | Detection Switch                      | 500mΩ max. |
| Insertion and removal cycle     | 10,000 cycles                         |            |

### Photo

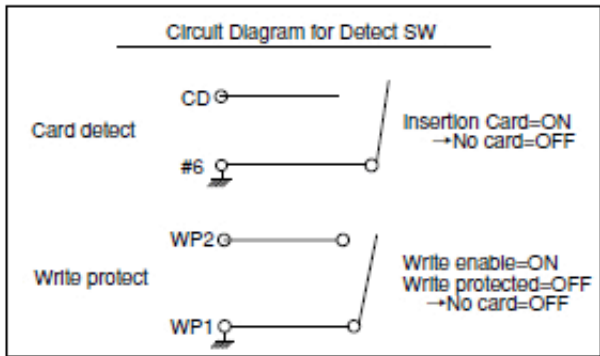


Dimensions

Unit: mm

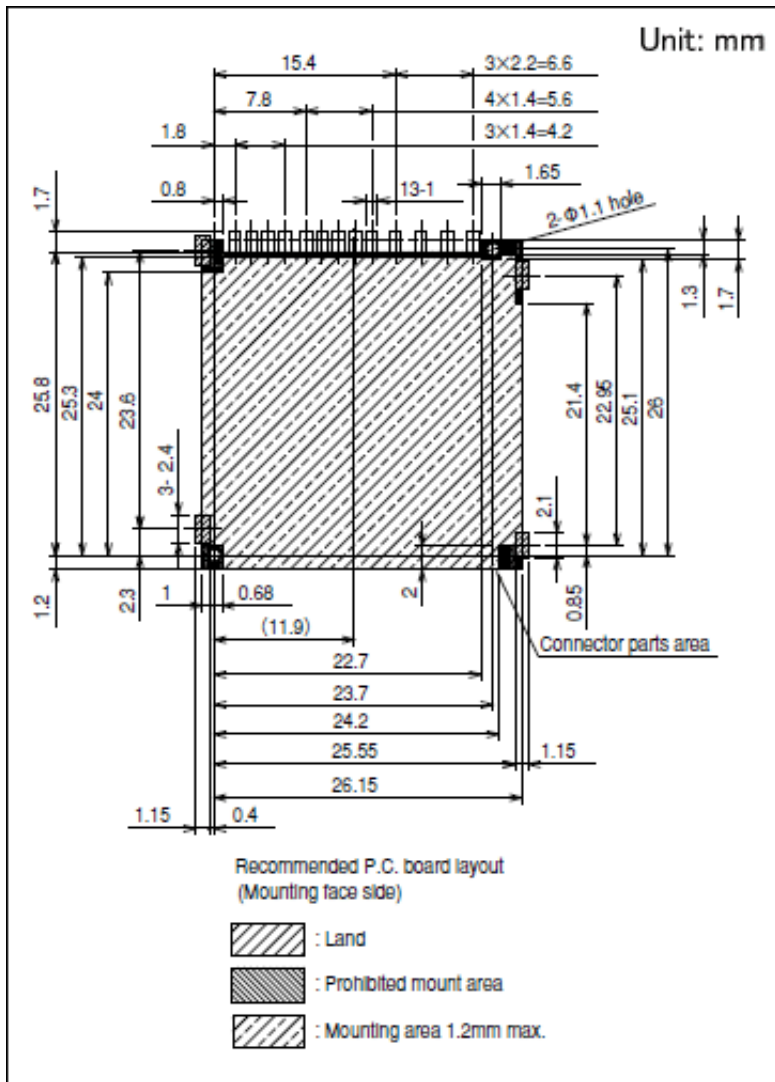


Detail A  
Scale 10 : 1



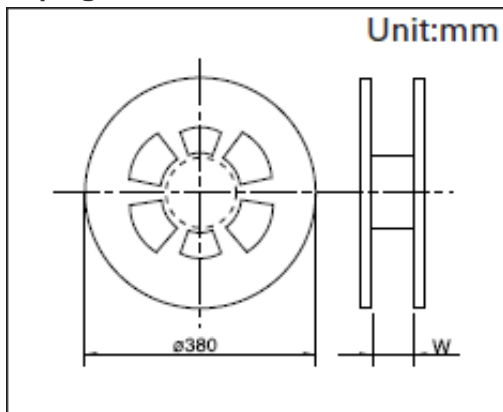
| Pin NO. | Pin NO. | Function                         |
|---------|---------|----------------------------------|
| NO.1    | #9      | DAT2                             |
| NO.2    | #1      | CD/DAT3                          |
| NO.3    | #2      | CMD                              |
| NO.4    | #3-1    | Vss                              |
| NO.5    | #3-2    | Vss                              |
| NO.6    | #4      | V <sub>DD</sub>                  |
| NO.7    | #5      | CLK                              |
| NO.8    | CD      | Card detect                      |
| NO.9    | #6      | Vss                              |
| NO.10   | #7      | DAT0                             |
| NO.11   | #8      | DAT1                             |
| NO.12   | WP1     | Write protect (Vss)              |
| NO.13   | WP2     | Write protect (V <sub>DD</sub> ) |
| NO.14   | Frame   | GND                              |
| NO.15   | Frame   | GND                              |
| NO.16   | Frame   | GND                              |
| NO.17   | Frame   | GND                              |

## Mounting Dimensions



## Packing Specifications

### Taping



|                                     |       |
|-------------------------------------|-------|
| Number of packages 1 reel<br>(pcs.) | 350   |
| 1 case / Japan                      | 700   |
| 1 case / export<br>packing          | 1,400 |

---

Tape width (mm) 44

---

Export package measurements (mm) 403×403×249

---

## Soldering Conditions

### Example of Reflow Soldering Condition (Reference)

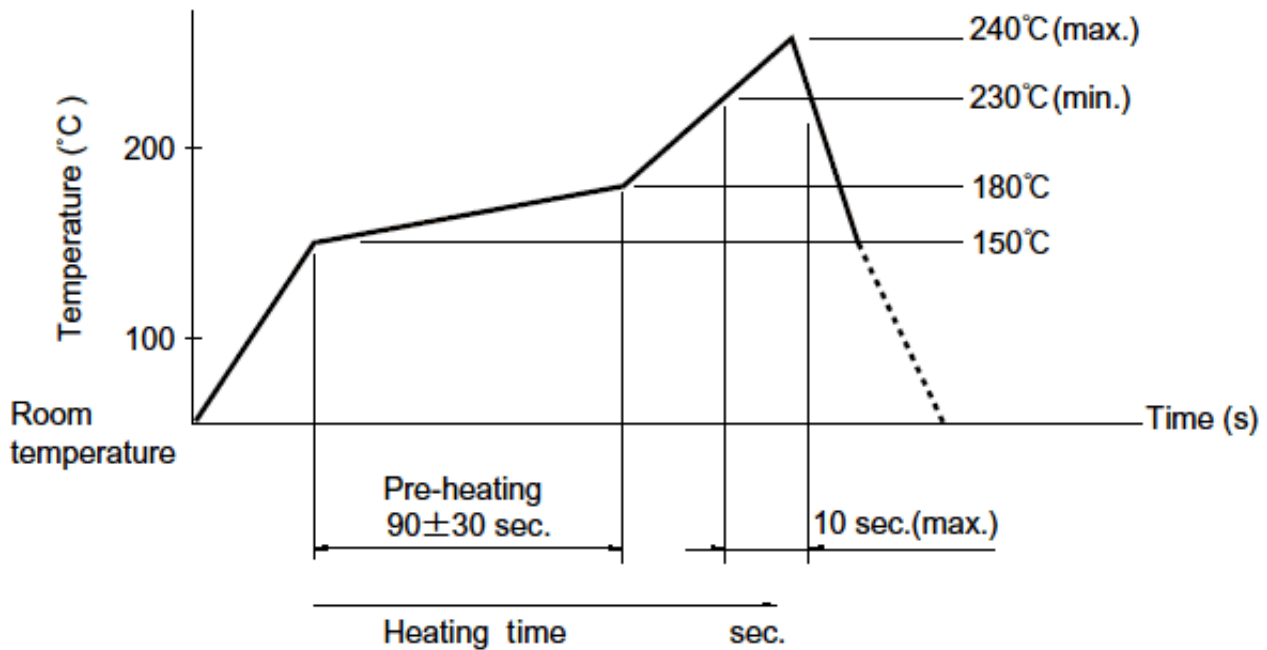
1. Heating method

Double heating method with infrared heater.

2. Temperature measurement

Thermocouple 0.1 to 0.2 Φ CA (K) or CC (T) at soldering portion.

3. Temperature profile.



Notes are common to this series/models.

1. This site catalog shows only outline specifications. When using the products, please obtain formal specifications for supply.
2. Please place purchase orders per minimum order unit (integer).