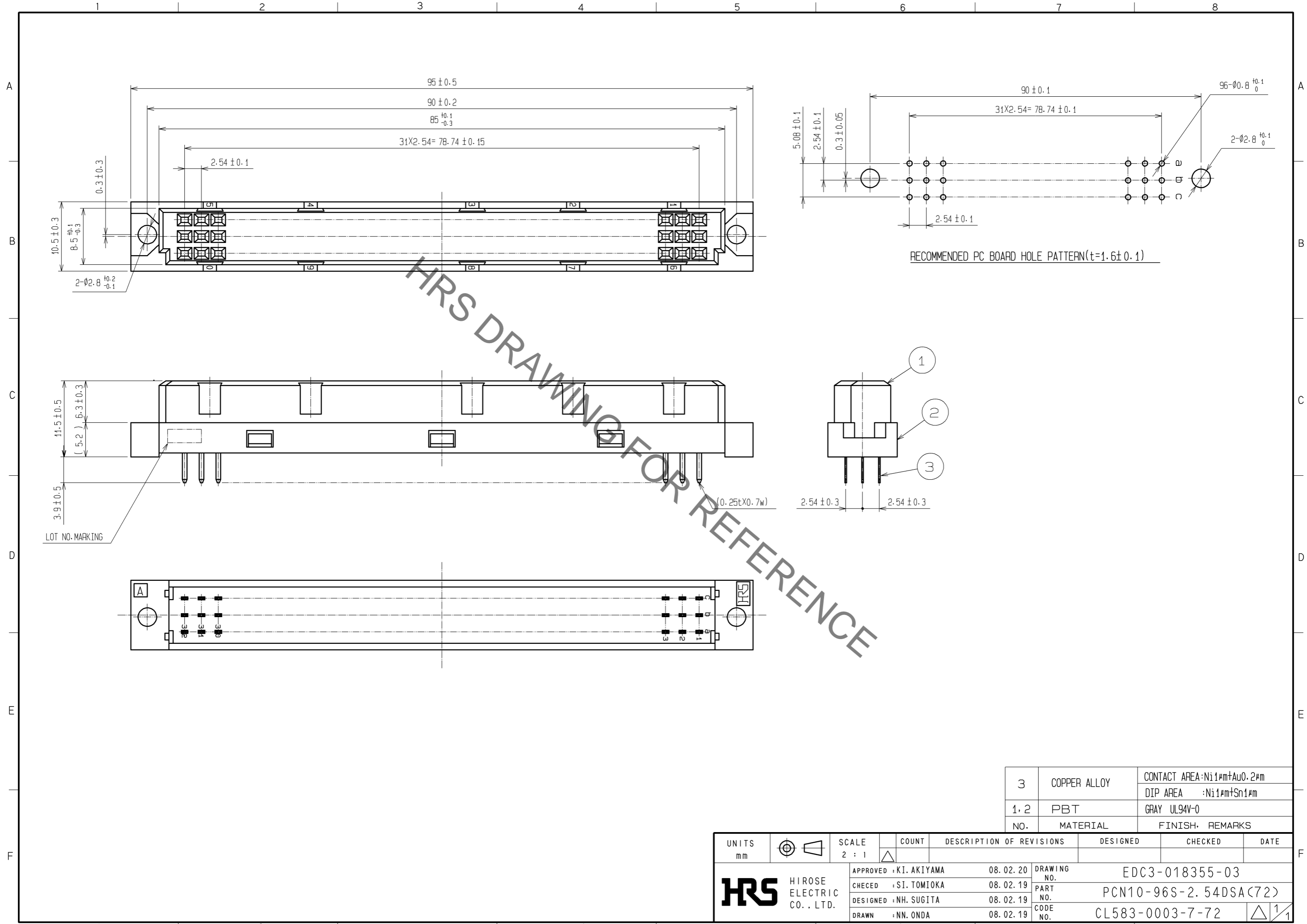


Jun.1.2019 Copyright 2019 HIROSE ELECTRIC CO., LTD. All Rights Reserved.
 In case of consideration for using Automotive equipment / device which demand high reliability, kindly contact our sales window correspondents.



HRS DRAWING FOR REFERENCE

3	COPPER ALLOY	CONTACT AREA: Ni1 μ m+Au0.2 μ m
1, 2	PBT	DIP AREA : Ni1 μ m+Sn1 μ m
NO.	MATERIAL	FINISH, REMARKS

UNITS mm		SCALE 2 : 1	COUNT Δ	DESCRIPTION OF REVISIONS	DESIGNED	CHECKED	DATE
HIROSE ELECTRIC CO., LTD.				APPROVED : KI. AKIYAMA	08.02.20	DRAWING NO. EDC3-018355-03	
				CHECED : SI. TOMIOKA	08.02.19	PART NO. PCN10-96S-2.54DSA(72)	
				DESIGNED : NH. SUGITA	08.02.19	CODE NO. CL583-0003-7-72	
				DRAWN : NN. ONDA	08.02.19	Δ 1/1	