

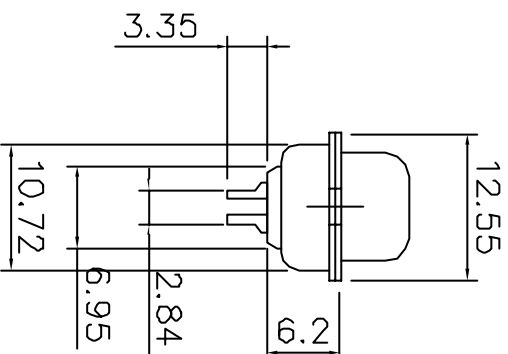
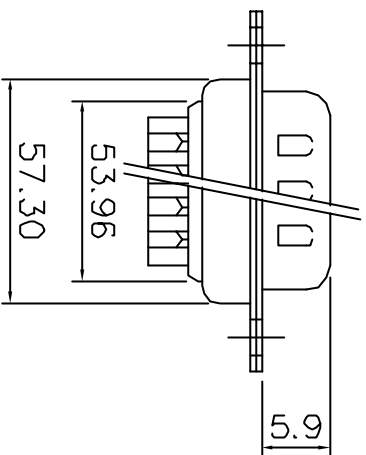
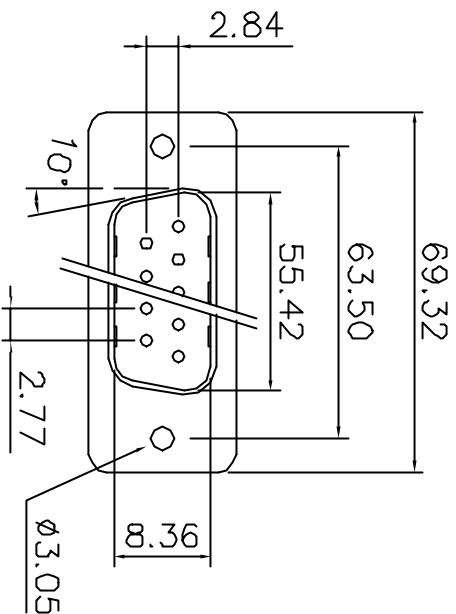
This document is the property of Amphenol Corporation and is delivered on the express condition that it is not to be disclosed, reproduced or used, in whole or in part, for the manufacture or sale by anyone other than Amphenol Corporation without its prior consent, and that no right is granted in disclosure or to use any information in this document.

MALE

Specifications

Contact Resistance: 30m ohms max. at DC 100mA
 Insulator Resistance: 1000M ohms min. at DC 500V
 Current Rating: 5 AMP
 Dielectric Withstanding Voltage: AC 1000V For 1 minute
 Operating Temperature: -55°C ~ +125°C
 Shell : steel, tin plated
 Contact: Brass , Selective gold { see table below }
 Termination : Tin over Nickel
 Housing: PBT & 30% Glass Fiber (UL 94V-0)

ROHS compliant
 MSL components : level 3



Drawing number	Contact plating
L717SDC37P	Gold flash
L777SDC37P	15µ inches
L717SDC37PC309	30µ inches

TOLERANCE	min	max	APPROVALS	DATE	TITLE
X	±0.05		GDU	06/03/06	SD SERIES D-SUB CONNECTORS SOLDER CUP PLUG
X.X	±0.1		J.F.L	06/03/06	
X.XX	±0.3		J.F.L	06/03/06	

UNIT: MM	SIZE: A4	DRAWING: L7-7SDC37P	REV: A
Scale N.A.		Sheet 1 of 1	
Dole Plant		AMPHENOL SOCAPEX	
AMPHENOL			