

This document is the property of Amphenol Corporation and is delivered on the express condition that it is not to be disclosed, reproduced or used, in whole or in part, for the manufacture or sale by anyone other than Amphenol Corporation without its prior consent, and that no right is granted to disclose or to use any information in this document.

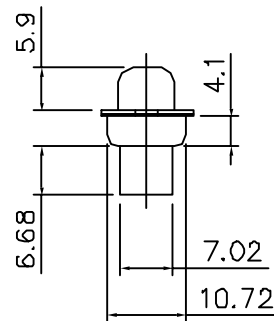
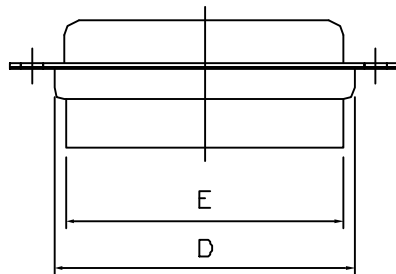
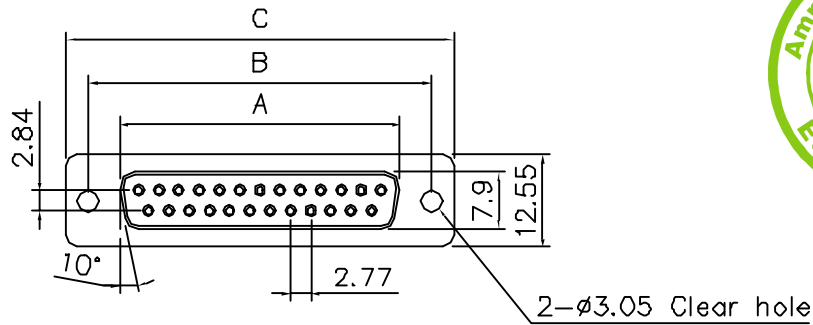


## D-SUB CRIMP TYPE

### Specifications

Contact Resistance:  $\leq 30m$  max. at DC  
 100mA  
 Insulator Resistance:  $\geq 1000M$  min. at DC  
 500V  
 Current Rating: 5 AMP  
 Dielectric Withstanding  
 Voltage: AC 1200V For 1 minute  
 Operating Temperature:  $-55^{\circ}C \sim +105^{\circ}C$   
 Housing: PBT & 30% Glass Fiber (UL  
 94V-0)  
 Shells : Brass  
 Plating : pure Tin over Nickel

ROHS compliant  
 MSL components : level 3



L177RR - - S

Shell size

Nber of cts

E = 09 ways  
 A = 15 ways  
 B = 25 ways  
 C = 37 ways

09-15-25-37

Dimension

cavities	A	B	C	D	E
9	16.33	24.99	30.81	19.20	15.45
15	24.99	33.32	39.14	27.70	24.45
25	38.38	47.04	53.04	41.10	38.00
37	54.84	63.50	69.32	57.30	53.96

TOLERANCE	m/m	APPROVALS	DATE	TITLE	AMPHENOL	
X.	0.05	DRAWN G.R	14/11/01	RR SERIES D-SUB CONNECTOR CRIMP VERSION PLUG	AMPHENOL SOCAPEX	
X.X	0.1	CHECKED J.F.L	14/11/01		Dale Plant	
X.XX	0.3	APPROVED J.F.L	14/11/01		Scale N.A. Sheet 1 of 1	
UNLESS OTHERWISE SPECIFIED				UNIT:  MM	SIZE: DRAWING N°	L177RR - - S
					REV. A	