

# IC149 Series (SMT)

# QFP/TQFP - 64 Pins (16x16) 0.8mm pitch

## Specifications

Insulation Resistance:	500MΩ at 150V DC
Withstanding Voltage:	100V <sub>eff</sub> to 700V <sub>eff</sub> for 1 minute
Contact Resistance:	30mΩ max. at 10mA and 20mV
Operating Temp. Range:	-25°C to +85°C
Reflow-soldering Temp.:	220°C for 60 seconds
Mating Cycles:	20 insertions maximum
Solvent Durability:	Freon
Allowable Torque (max.):	- for 1-time screw connection = max 0.147 Nm - for repetitive screw connection = min 0.078 Nm max 0.098 Nm

## Materials and Finish

Housing: Polyphenylenesulfide (PPS) glass filled UL94V-0  
 Contact: Beryllium Copper (BeCu)  
 Plating: Au 0.3μm min. over 2.5 ~ 4.5μm Ni = B5



## Part Number (Details)

**IC149 - 064 - \*08 - B5**

Series No.

No. of Contact Pins

Positioning Pins:

0 = Without Pins

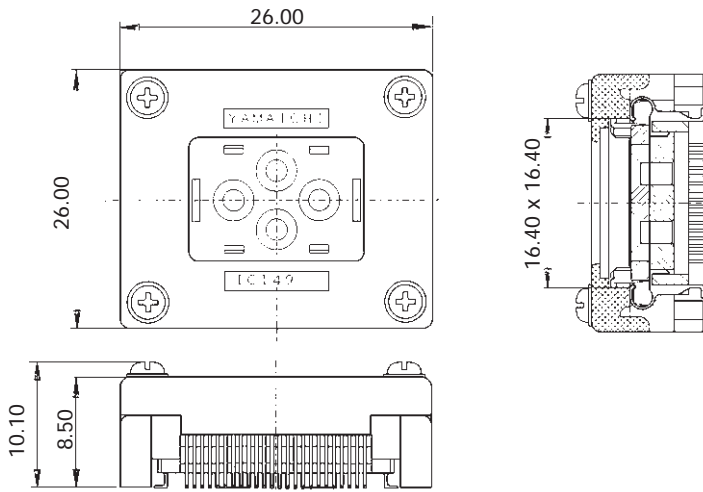
1 = With Pins

Contact Plating:

B5 =Au over Ni

## Compatible Emulation-Adapter ICP-064-2

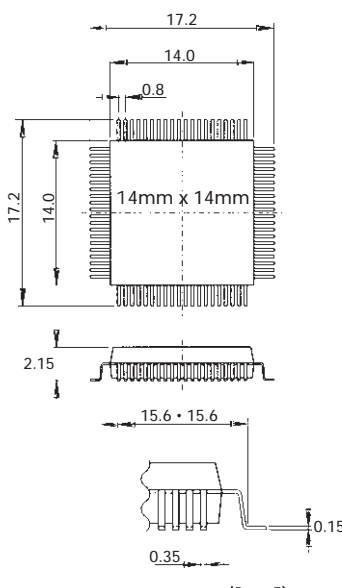
## Outline Socket Dimensions (Reference Only)



### Remarks

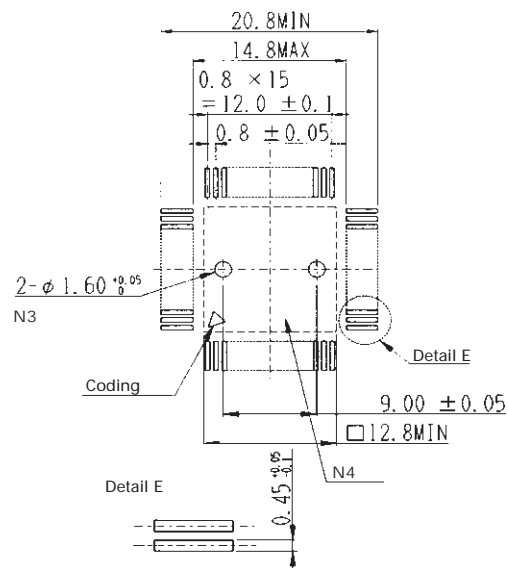
1. Ensure a clean contact area. Fluxes, dust and other impurities may cause corrosion and contact problems.
2. This Socket is not for automatic production. It is particularly suitable for the development of software stored in ROM and for testing LSI-IC's.
3. Careful attention must be taken when fixing the Socket, since it is entirely made from thermoplastic material. If the max. torque is exceeded, the Socket will be damaged beyond repair.
4. If using the Socket with an Adapter, please use the gold-plated Socket version.

## IC - Dimensions



## Socket PCB-Layout

Top View from Socket



### Notes

- N3: These holes are only necessary for use with positioning pins.  
 N4: The Socket may be glued to the PC Board within this area.