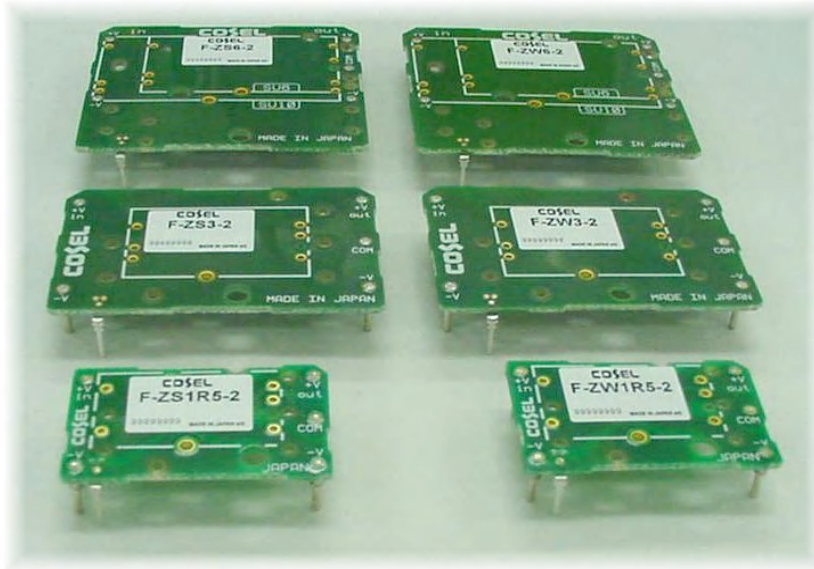


# Replacement PCB to SUCS/SUCW series from ZS/ZW series.



## ■ Application

For evaluation to substitute SUCS/SUCW series for ZS/ZW series.  
(Mountable SUCS and SUCW series is DIP type only.)

## ■ Outline

F - Z  $\square$   $\square$  - 2  
① ②

① Output S, or W

② Output wattage 1R5, 3, 6 (6[W] and 10[W] are common.)

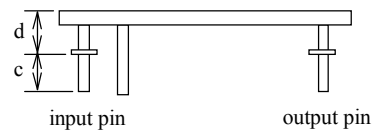
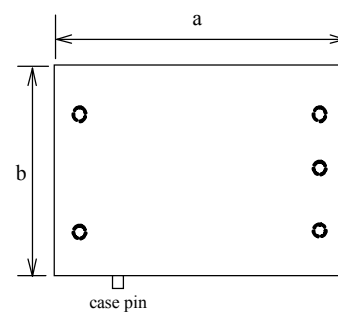
Output wattage	1R5	3	6
a [mm]	31.20	44.45	44.65
b [mm]	19.05	27.70	39.50
c [mm]	4.00	4.00	4.00
d [mm]	3.10	3.10	3.10

Tolerance 0.5[mm]

PCB thickness 1.0[mm]

\*Pin location is the same as ZS and ZW series.

External view of the attachments



## ■ Correspondence

Model	ZS1R5	ZW1R5	ZS3	ZW3	ZS6/ZS10	ZW6/ZW10
Attachment	F-ZS1R5-2	F-ZW1R5-2	F-ZS3-2	F-ZW3-2	F-ZS6-2	F-ZW6-2