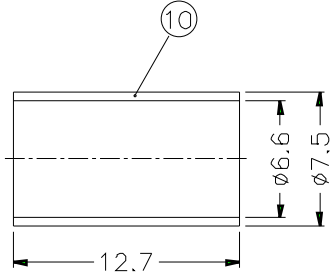
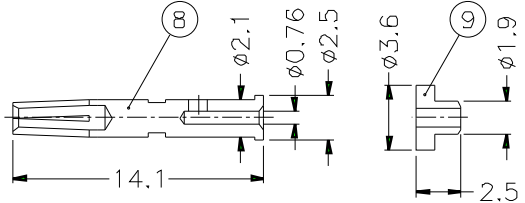
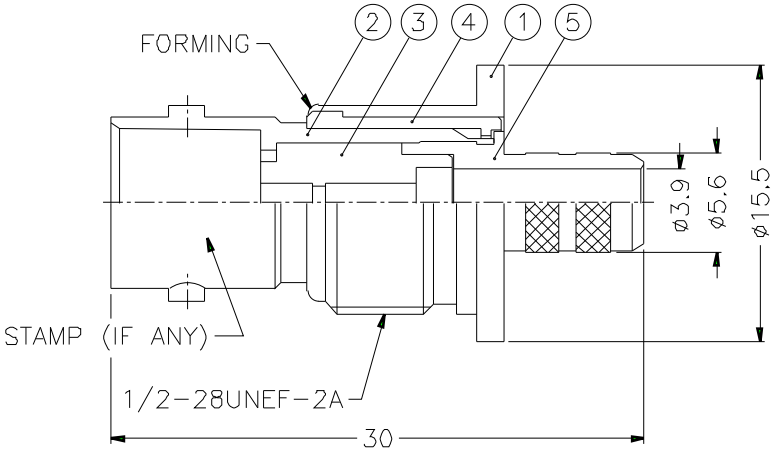
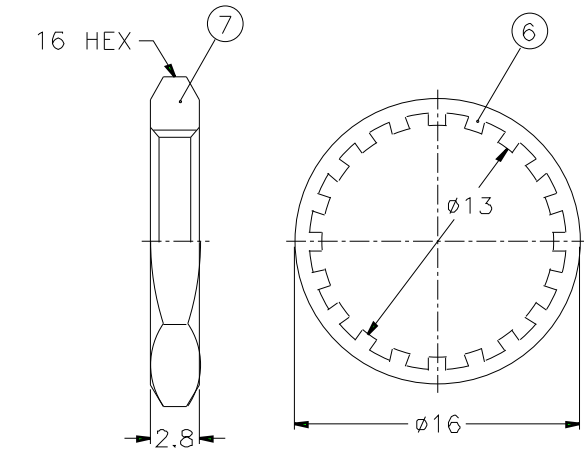


REVISIONS		
ISS	ZONE	DESCRIPTION\PER REQUEST\DATE

REMARK: BETWEEN NO.1 AND NO.2 MUST WITHSTAND 15 IN-LBS MIN. TORQUE AND 30 LBS MIN. PULL FORCE

RECOMMENDED CABLE STRIPPING DIM'S

RECOMMENDED MOUNTING HOLE



- NOTES: FINISH (PLATING THICKNESS IN MICRO-INCHES)
1. BRASS PER QQ-B-626
 2. BRASS PER QQ-B-613
 3. NICKEL PL. 100 MIN. THICK OVER COPPER STRIKE
 4. PHOSPHOR BRONZE PER QQ-B-750
 5. GOLD PL. 3 MIN. THICK OVER NICKEL PL. 100 MIN. THICK OVER COPPER STRIKE
 6. TEFLON MIL-P-19468
 7. JIS H 3250, C 2700

1. CRIMPED FERRULE
HEX CRIMP SIZE .255"
2. CRIMPED CONTACT PIN
HEX CRIMP SIZE .068"
3. MAX. PANEL THICKNESS=6mm

10	FERRULE	NOTE 7	NOTE 3	1	FR-75/66X127
9	INSULATOR	DEL RIN	NATURAL	1	B50000-11-36/1
8	CONTACT PIN	NOTE 4	NOTE 5	1	B74000-8-25/076
7	HEX NUT	NOTE 1	NOTE 3	1	HN16-1/2-28X28
6	LOCK WASHER	NOTE 2	NOTE 3	1	LW-16/13X05
5	BARREL	NOTE 1	NOTE 3	1	B74040-5-56/39
4	INSULATOR	DEL RIN	NATURAL	1	B74040-4
3	INSULATOR	NOTE 6	NATURAL	1	B74040-3T-75
2	BODY	NOTE 1	NOTE 3	1	B74040-2-B
1	HOUSING	NOTE 1	NOTE 3	1	RB6721E1-1-B
NO.	DESCRIPTION	MATERIAL	FINISH	Q'TY	DRAWING NO.

DIMENSIONS ARE IN MILLIMETERS		PART NO.	B6721A1-NT3G-3-75
UNLESS OTHERWISE SPECIFIED TOLERANCES		APPROVED	DATE
0.5-6 = ±0.2			10-11-01'
6-30 = ±0.4		CHECKED	DATE
30-120 = ±0.6			10-11-01'
120-315 = ±1		DRAWN	DATE
315-1000 = ±1.6			10-11-01'
1000-2000 = ±2.4		FILE NO.	

Amphenol	
TITLE	BNC BULKHEAD CRIMP JACK ISOLATED GROUND
DRAWING NO.	KJ-B6721A1-NT3G-62AU-75
ITEM NO.	