

## Precision Potentiometers



Single Turn

Model	3381	6137/38*	6163	6173
Resistor Element Type	Conductive Plastic	Conductive Plastic	Conductive Plastic	Conductive Plastic
Diameter, Inches	1-5/16"	7/8"	7/8"	7/8"
Mounting Style	Bushing	Bushing	Servo	Servo
Resistance Range, Ohms	1K to 300K	1K to 100K	1K to 100K	1K to 100K
Independent Linearity, Standard*	±0.5%	±1%	±1.0%	±0.5%
Power Rating, Watts	2.0 at 70°C	1.0 at 70°C	1.0 at 70°C	1.0 at 70°C
Rotational Life	10 Mil.	10 Mil.	5 Mil.	5 Mil.
RoHS Compliant	Yes	Yes	Yes	Yes

\* Designated for high side load applications.



Multiturn

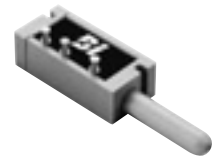
Model	A	C	7246	7276 (plastic shaft & bushing)
Resistor Element Type	Wirewound	Wirewound	Wirewound	Wirewound
Number of Turns	10	3	10	10
Diameter, Inches	1-13/16"	1-13/16"	7/8"	7/8"
Mounting Style	Bushing	Bushing	Bushing	Bushing
Resistance Range, Ohms	10 to 500K	5 to 100K	10 to 125K	100 to 100K
Independent Linearity, Standard*	±0.25% (<300W = ±0.50%)	±0.50%	±0.25%	±0.25%
Power Rating, Watts	5.0 at 40°C	3.0 at 40°C	2.0 at 25°C	2.0 at 25°C
Rotational Life	2 Mil.	2 Mil.	1 Mil.	500K
RoHS Compliant	Yes	Yes	Yes	Yes

Specifications subject to change without notice.

\*Non-standard linearities available. Consult factory.

### Typical Special Features: (Consult your factory representative for details and applicability.)

- Special Resistance Value and Tolerance
- Special Linearity
- Center Tap
- Rear Shaft Extension
- Shaft Flat
- Slotted Shaft
- Shaft Lock
- Special Testing
- Mechanical Stops (Standard on all Multiturn)



Linear Actuated/Spring Return

6187	6671/6673	5611/5613
Conductive Plastic	Conductive Plastic	Wirewound
7/8"	2"	2"
Bushing	Bushing/Servo	Bushing/Servo
1K to 100K	1K to 300K	15 to 80K
±1.0%	±0.25%	±0.5%
1.0 at 70°C	3.5 at 70°C	3.5 at 70°C
5 Mil.	5 Mil.	1 Mil.
Yes	Yes	Yes

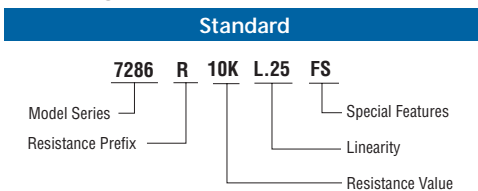
Model 404
Conductive plastic
Bracket/Servo
1K - 150K
±1.0%
5 Mil.
Yes



7283/7286/7288*	7383/7386/7388*	7483/7486/7488*	8136 (plastic shaft & bushing)	8143/8146/8148*
Wirewound	Wirewound	Wirewound	Hybrid	Hybrid
10	3	5	10	10
7/8"	7/8"	7/8"	7/8"	7/8"
Servo/Bushing	Servo/Bushing	Servo/Bushing	Bushing	Servo/Bushing
100 to 100K	100 to 30K	100 to 50K	1K to 100K	1K to 100K
±0.25%	±0.25%	±0.25%	±0.25%	±0.25%
2.0 at 70°C	1.5 at 70°C	1.5 at 70°C	2.0 at 25°C	2.0 at 70°C
1 Mil.	300K	500K	1 Mil.	5 Mil.
Yes	Yes	Yes	Yes	Yes

\* Models 7288, 7388, 7488, 8148 designated for high side load applications.

### Ordering Information



**Special Design Capability**

An extensive variety of special feature options are available for the standard models shown above. Your local BI Technologies representative can provide design assistance and recommendations. Factory application engineering support is also available to provide custom solutions for special requirements.