

## 1.25 mm [.049] FP Connectors (Continued)

### 1.25 mm Single-Row Post Headers for Vertical Mounting

#### Material and Finish

**Housing** — Polyphenylene sulfide, black, UL 94V-0 rated

**Contact** — 0.50 [.020] dia. brass rod, tin-lead plated

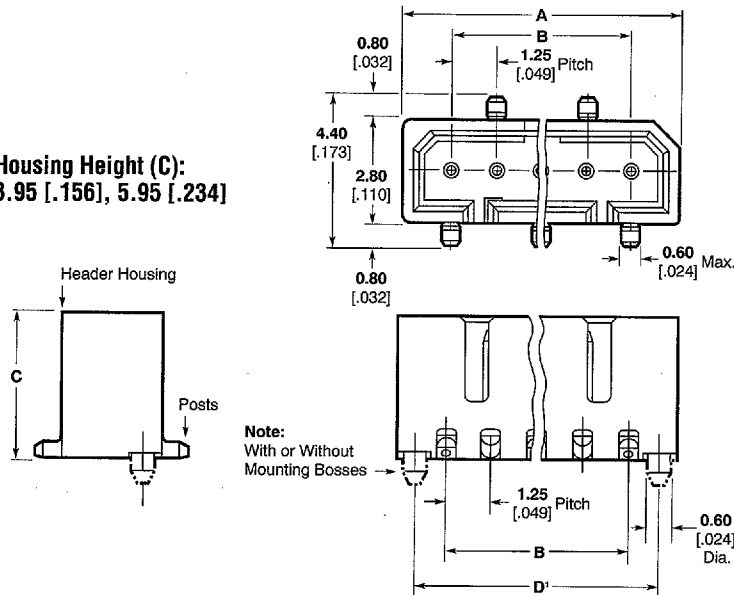
#### Related Product Data

**Mates with** — Receptacle Headers, pages 110 and 111

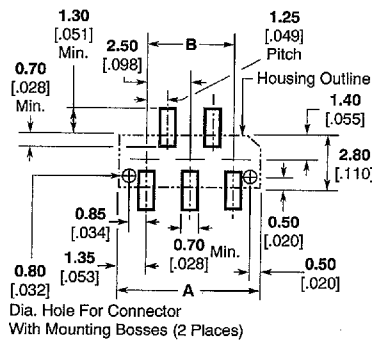
#### Packaging Quantities, Tube

- 4 Pos. — 75 Pcs./Tube
- 5 Pos. — 60 Pcs./Tube
- 6 Pos. — 50 Pcs./Tube
- 7 Pos. — 45 Pcs./Tube
- 8 Pos. — 40 Pcs./Tube
- 10 Pos. — 30 Pcs./Tube
- 20 Pos. — 15 Pcs./Tube

**Housing Height (C):**  
 3.95 [.156], 5.95 [.234]



**Note:**  
 With or Without Mounting Bosses



Recommended PC Board Layout

Board Connection Configuration		Dimensions	
Right-Angle		C = 3.95	H = 5.8
		C = 5.95	H = 7.8
	Tolerances		
		.156	.228
Parallel		C = 3.95	H = 5.0
		C = 5.95	H = 7.0
	Tolerances		
		.156	.197

No. of Pos.	Dimensions				Part Numbers			
	A	B	C	D'	With Mounting Bosses		Without Mounting Bosses	
					Loose Piece	Tube <sup>2</sup>	Loose Piece	Tube <sup>2</sup>
4	6.45 .254	3.75 .148	3.95 .156	5.45 .215	3-174820-4	3-175642-4	—	3-175634-4
5	7.70 .303	5.00 .197	3.95 .156	6.70 .264	—	3-175642-5	3-174644-5	3-175634-5
6	8.95 .352	6.25 .246	3.95 .156	7.95 .313	3-174820-6	3-175642-6	—	3-175634-6
7	10.20 .402	7.50 .295	3.95 .156	9.20 .362	3-174820-7	—	3-174644-7	3-175634-7
8	11.45 .451	8.75 .345	3.95 .156	10.45 .411	3-174820-8	3-175642-8	3-174644-8	3-175634-8
			5.95 .234	—	6-175642-8	6-174644-8	6-175634-8	
10	13.95 .549	11.25 .443	3.95 .156	12.95 .510	4-174820-0	4-175642-0	—	4-175634-0
17	22.70 .894	20.00 .787	5.95 .234	21.70 .854	7-174820-7	—	7-174644-7	—
20	26.45 1.041	23.75 .935	5.95 .234	25.45 1.002	8-174820-0	8-175642-0	—	—

<sup>1</sup>"D" dimension used only with Post Headers with Mounting Bosses.

**Packaging Quantities, Tube** — See chart at left.