

MICRO SWITCH

FREEMONT ILLINOIS, U.S.A
A DIVISION OF HONEYWELL
FED. MFG. CODE 91929

ASSEMBLY- TOGGLE SWITCH

CATALOG LISTING
23AT73-T2-D

MILITARY P/N
M8805/92-001

23AT73-T2-D
PAGE 1 OF 1

M

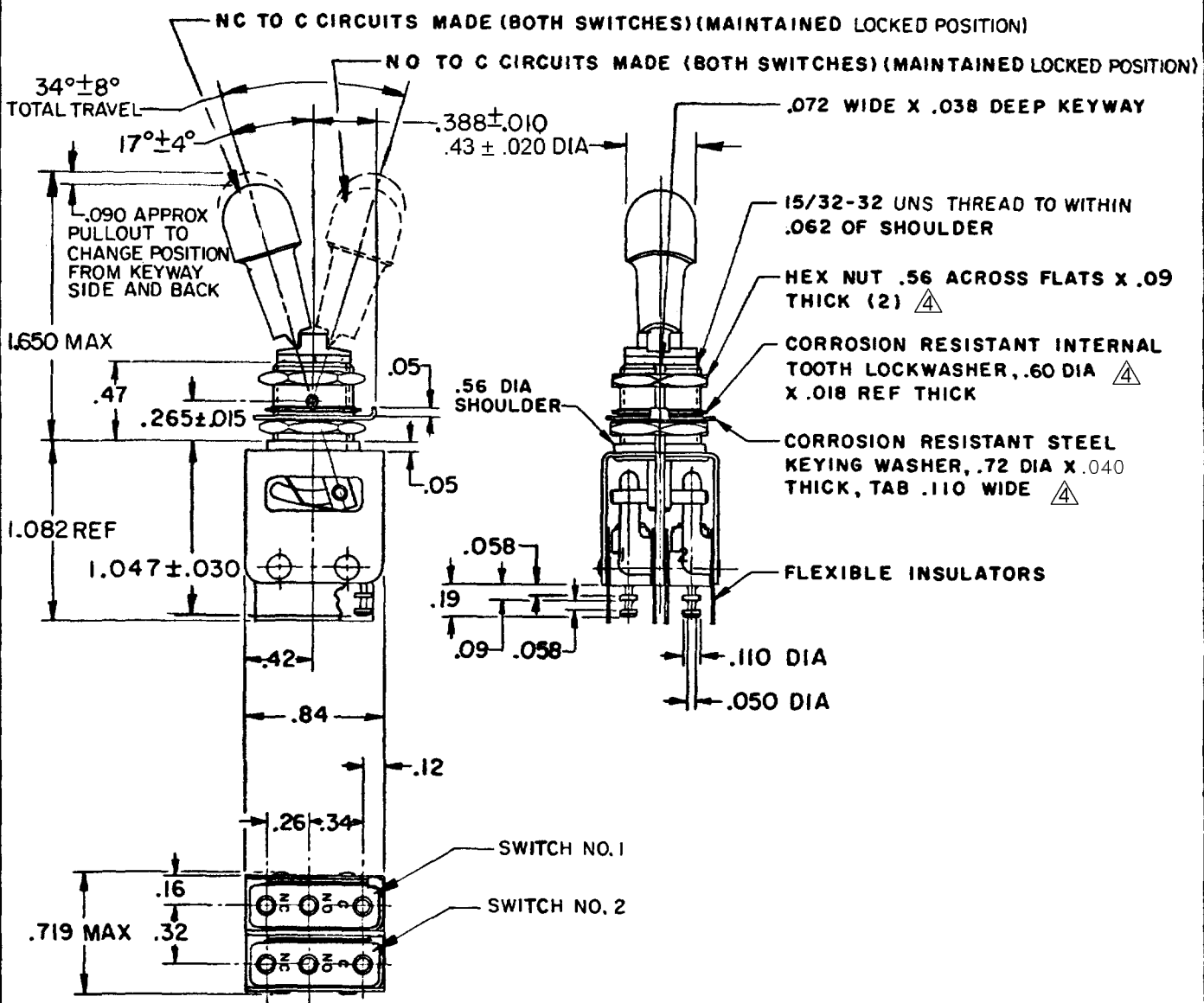
DRAWING
NUMBER

ISSUE
13

RELEASE NO. PR-10467
15OCT04
AK
CHECK
23 OCT 98
JAF
CHECK
7 AUG 81
81
T M M 7 AUG 81
DRAWN

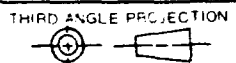
REVISIONS

A	C080402	JALA	11 APR 95
B	C093688	MPO	23 OCT 98
C	CO-92636	CCK	21 DEC 98
D	207069	MDM	19 DEC 02
E	0008575	KSR	15OCT04



- NOTES
- 1 UNIT INCLUDES CAT. LIST. 21SM284-T2 BASIC SWITCH
 - 2 (MS25085-2) (2) TERMINALS ARE PLATED FOR SOLDERING
 - 3 OPERATING POSITION SIMULTANEITY OF BOTH BASIC SWITCHES IS WITHIN 10° OF LEVER TRAVEL
 - △ HARDWARE FURNISHED ASSEMBLED WITH SWITCH OR IN PACKET PER MIL-PRF-8805
 - 5 REPLACEMENT MOUNTING HARDWARE PACKET 15PA311-AT

THIS DRAWING COVERS A PROPRIETARY ITEM AND IS THE PROPERTY OF MICRO SWITCH, A DIVISION OF HONEYWELL. THIS DRAWING IS NOT TO BE COPIED OR USED WITHOUT THE APPROVAL OF MICRO SWITCH.



CHARACTERISTICS

ELECTRICAL DATA

CONTACT ARRANGEMENT S P D T (2)			
	SEA LEVEL		50,000 Ft.
LOAD	28VDC	115VAC	28VDC
RESISTIVE	5	5	5
INDUCTIVE	3	5	2.5
LAMP	2.4	1.5	2.4

SCALE FULL

DO NOT SCALE PRINT

TOLERANCES
APPLY TO DESIGN UNITS. CONVERSIONS ARE ONLY FOR REFERENCE. UNLESS NOTED, TOLERANCES ARE ±

DIM.	TOL.	DIM.	TOL.
mm	mm/in	in	mm/in
NO PLACES	X	1/04	X X
ONE PLACE	X, X	0.010	X X
TWO PLACES	X, X, X	0.0010	X X X
THREE PLACES	X, X, X, X	0.0001	X X X X
ANGLES			

DESIGN UNITS SI METRIC US CUSTOMARY

WEIGHT .06 LB

RASTER