

# MICRO SWITCH

FREEPORT ILLINOIS, U.S.A  
A DIVISION OF HONEYWELL

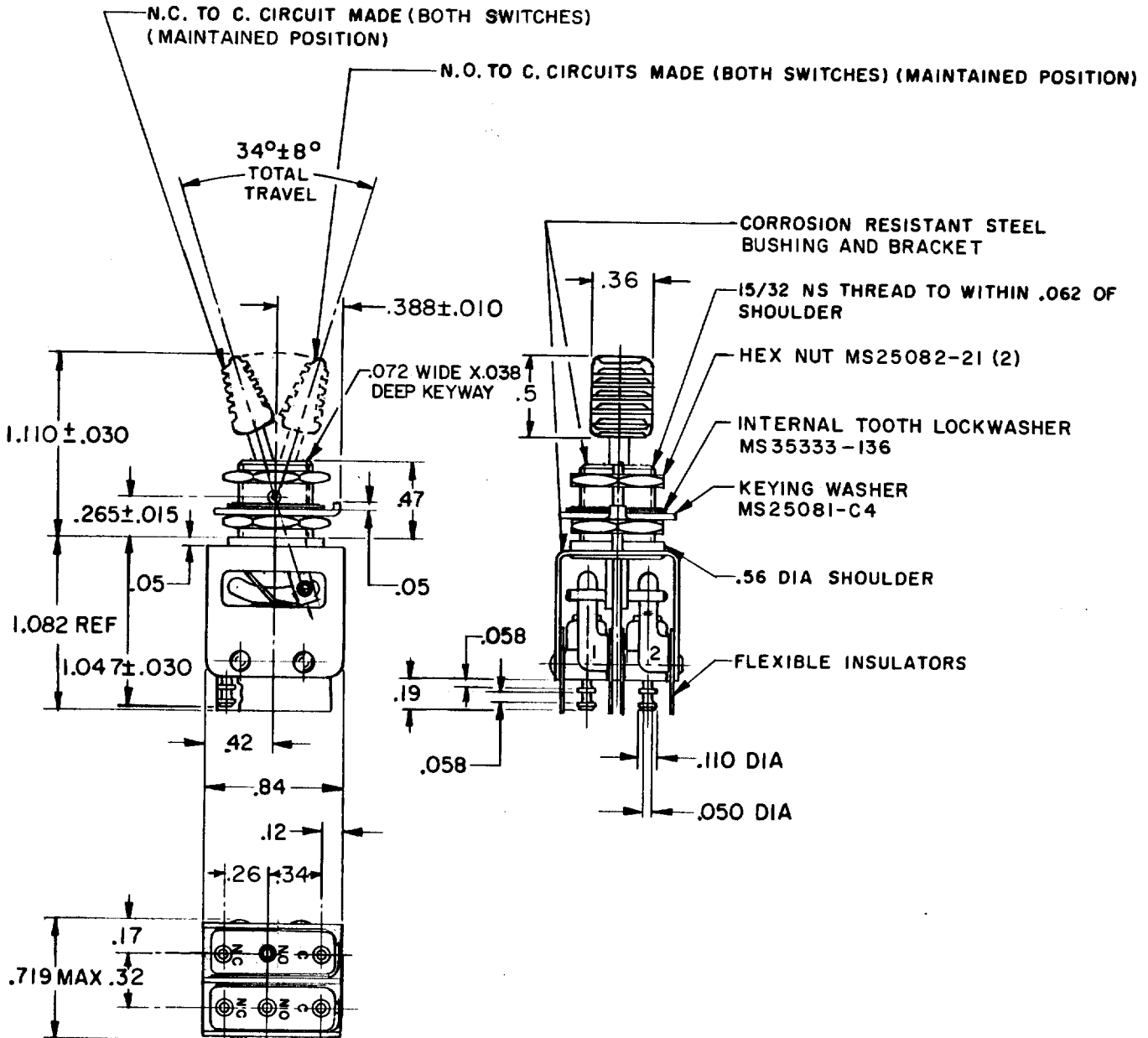
FED. MFG. CODE 91929

# ASSEMBLY- TOGGLE SWITCH

CATALOG LISTING

## 23AT473-T2

MILITARY P/N  
M8805/26-003



**NOTE -**

- 1-UNIT INCLUDES CAT. LIST.2ISM284-T2(MS25085-2) BASIC SWITCH (2)
- 2- TERMINALS ARE PLATED FOR SOLDERING
- 3- OPERATING POSITION SIMULTANEITY OF BOTH BASIC SWITCHES MUST BE WITHIN 10° OF LEVER TRAVEL

THIS DRAWING COVERS A PROPRIETARY ITEM AND IS THE PROPERTY OF MICRO SWITCH, A DIVISION OF HONEYWELL. THIS DRAWING IS NOT TO BE COPIED OR USED WITHOUT THE APPROVAL OF MICRO SWITCH.

### CHARACTERISTICS

### ELECTRICAL DATA

SCALE FULL

CONTACT ARRANGEMENT  
S P D T (2)

DO NOT SCALE PRINT

SEA LEVEL

50,000 Ft.

	SEA LEVEL	50,000 Ft.
Load	28 VDC	115 VAC
Resistive	5	5
Inductive	3	5
Lamp	2.4	1.5

UNLESS OTHERWISE NOTED  
DIMENSIONS ARE IN INCHES  
**TOLERANCES ARE:**  
ONE PLACE (.0) ±.030  
TWO PLACE (.00) ±.015  
THREE PLACE (.000) ±.005  
ANGLES ±

WEIGHT .075 LB MAX

23AT473-T2

M

DRAWING NUMBER

7

8

8

8

REPLACES

PR-1271

RELEASE NO.

CHECK

70

70

70

70

70

70

70

70

70

70

70

70

70

0-50378-1A

DRAWN

M B S 4 JUNE 70