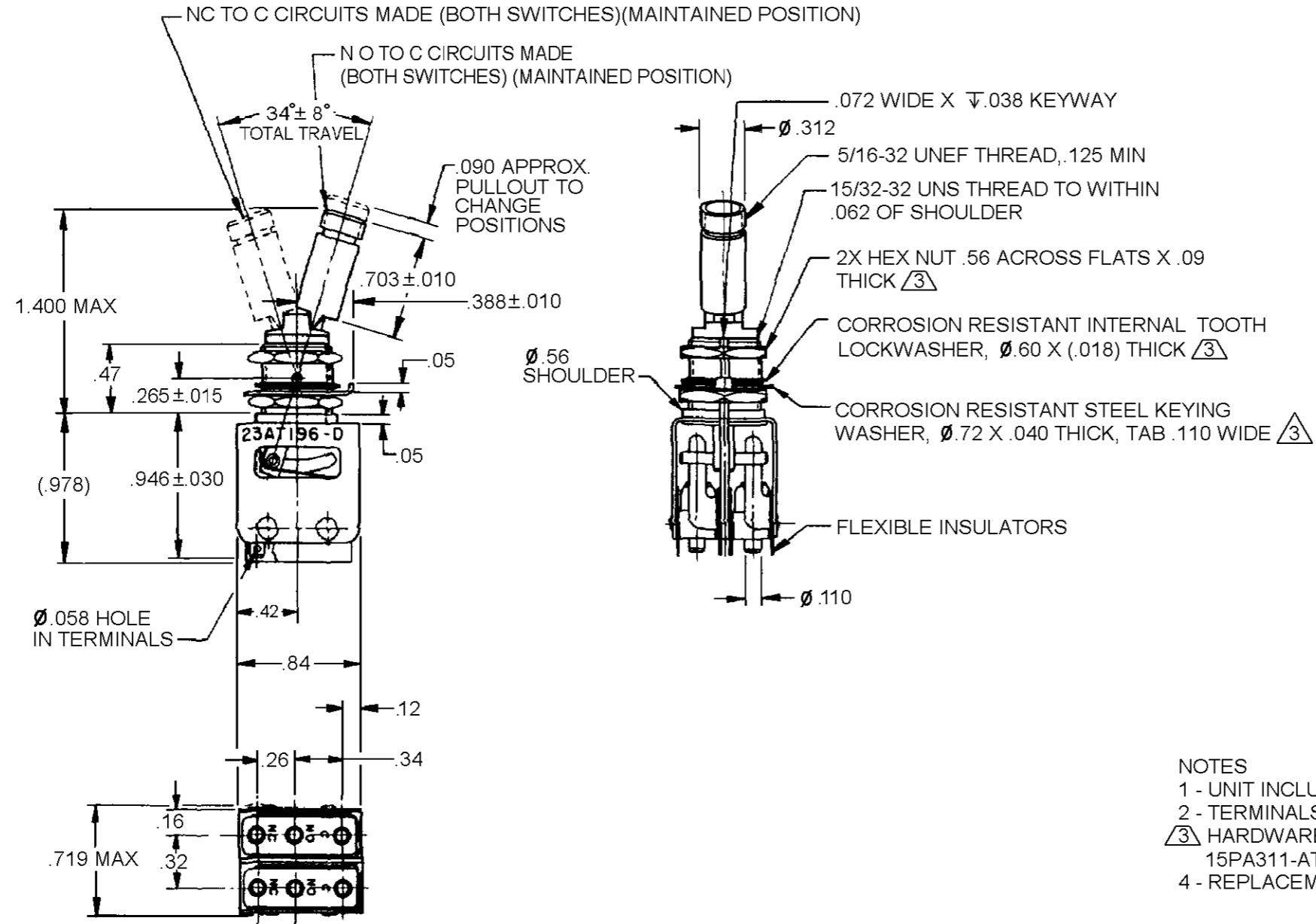


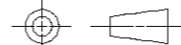
CATALOG LISTING  
**23AT196-D**  
PAGE 1 OF 1  
REPLACES PR-1829  
RELEASE NO.  
M  
ISSUE 6  
REVISIONS  
A 206069  
DLT 5 AUG 02  
CHECK  
S A V  
CHECK  
5 AUG 02  
CHECK  
5 AUG 02  
DRAWN  
DLT



- NOTES  
1 - UNIT INCLUDES 2X CAT. LIST. 21SM284 (MS25085-1) BASIC SWITCH  
2 - TERMINALS ARE PLATED FOR SOLDERING  
③ HARDWARE FURNISHED ASSEMBLED WITH SWITCH OR IN PACKET 15PA311-AT PER MIL-PRF-8805  
4 - REPLACEMENT MOUNTING HARDWARE PACKET 15PA311-AT

THIS DRAWING COVERS A PROPRIETARY ITEM AND IS THE PROPERTY OF MICRO SWITCH, A DIVISION OF HONEYWELL. THIS DRAWING IS NOT TO BE COPIED OR USED WITHOUT THE APPROVAL OF MICRO SWITCH

THIRD ANGLE PROJECTION



SCALE	FULL
DO NOT SCALE PRINT	
<b>UNLESS OTHERWISE SPECIFIED TOLERANCES ARE</b>	
ONE PLACE	(.0) ±.030
TWO PLACE	(.00) ±.015
THREE PLACE	(.000) ±.005
ANGLES	±
WEIGHT	

**CHARACTERISTICS**

**ELECTRICAL DATA**

CONTACT ARRANGEMENT  
**2X SPDT**

ANSI Y14.5M-1982 APPLIES