

**FEATURES AND SPECIFICATIONS**

**Features and Benefits**

- Sizes 2 to 15 circuits

**Reference Information**

Product Specification: PSX10-39

Packaging: Bulk

UL File No.: E29179SC

CSA File No.: LR19980

Mates With: 3001

Designed In: Inches

**Electrical**

Voltage: 250V

Current: 7.0A

Contact Resistance: 20mΩ max.

Dielectric Withstanding Voltage: 1500V

Insulation Resistance: 500K MΩ min.

**Mechanical**

Mating Force: 24 oz max.

Unmating Force: 4 oz min.

Normal Force: 350g

Durability: 25 cycles Tin

**Physical**

Housing: Nylon, UL 94V-2

Contact: Brass, 1.14mm (.045") square

Plating: 5μm Tin and 0.51μm Gold

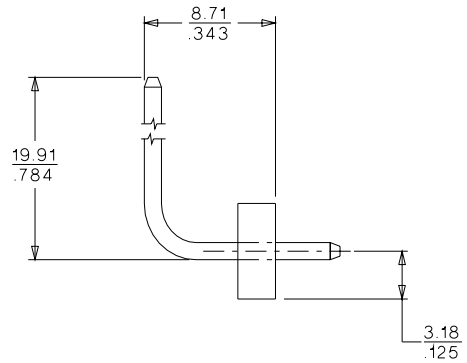
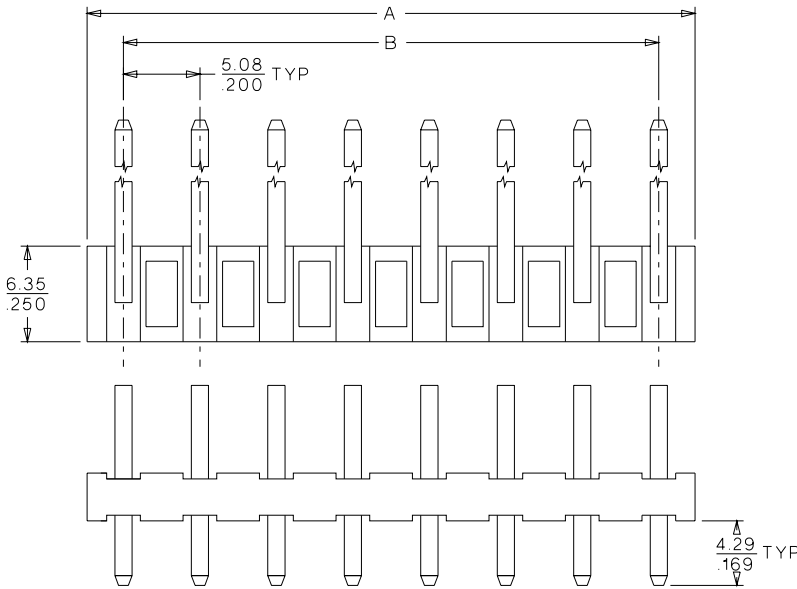
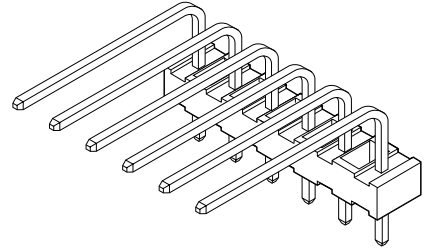
Temperature: -40 to +105°C

**molex® 5.08mm (.200") Pitch**

**KK® Header**

**3061**

**Right Angle Square Pin**



**ORDERING INFORMATION AND DIMENSIONS**

Circuits	Order No.		Dimension	
	Tin	Gold	A	B
2	10-06-1025	38-00-2012	9.91 (.390)	5.08 (.200)
3	10-06-1035	38-00-2013	14.99 (.590)	10.16 (.400)
4	10-06-1045	38-00-2014	20.07 (.790)	15.24 (.600)
5	10-06-1055	38-00-2015	25.15 (.990)	20.32 (.800)
6	10-06-1065	38-00-2016	30.23 (1.190)	25.40 (1.000)
7	10-06-1075	38-00-2017	35.31 (1.390)	30.48 (1.200)
8	10-06-1085	38-00-2018	40.39 (1.590)	35.56 (1.400)
9	10-06-1095	38-00-2019	45.47 (1.790)	40.64 (1.600)
10	10-06-1105	38-00-2020	50.55 (1.990)	45.72 (1.800)
11	10-06-1115	38-00-2021	55.63 (2.190)	50.80 (2.000)
12	10-06-1125	38-00-2022	60.71 (2.390)	55.88 (2.200)
13	10-06-1135	38-00-2023	65.79 (2.590)	60.96 (2.400)
14	10-06-1145	38-00-2024	70.89 (2.790)	66.04 (2.600)
15	10-06-1155	38-00-2025	75.95 (2.990)	71.12 (2.800)