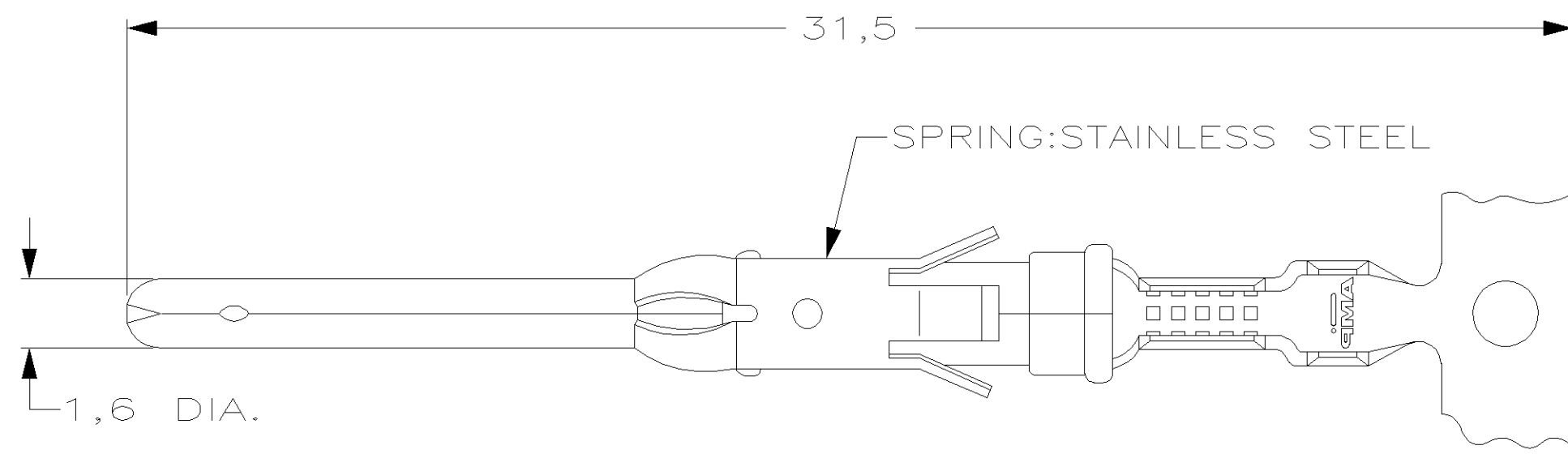
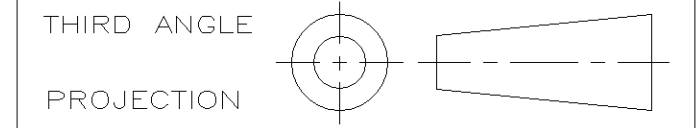
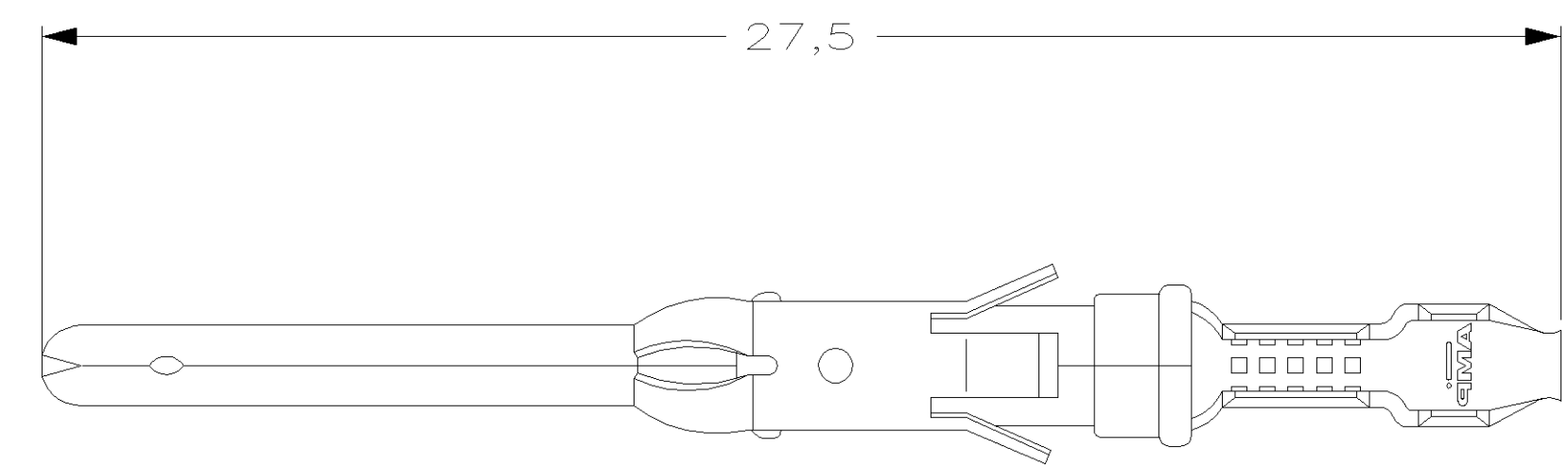


DO NOT SCALE
DIMENSIONS IN mm

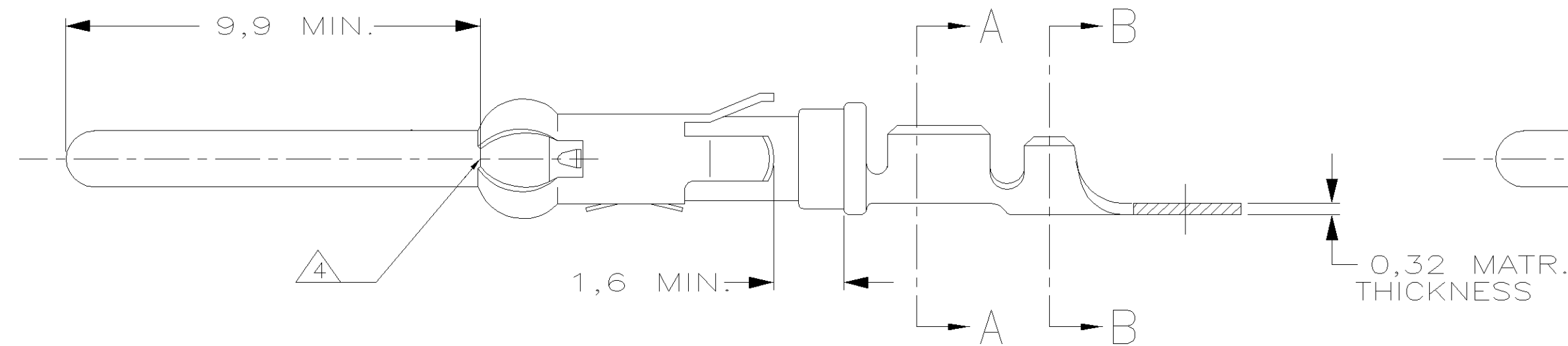
METRIC



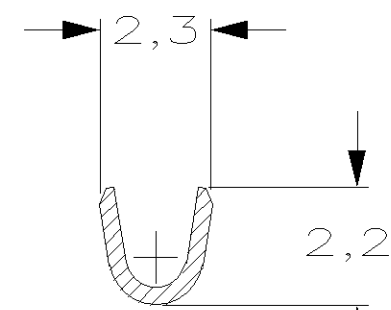
STRIP



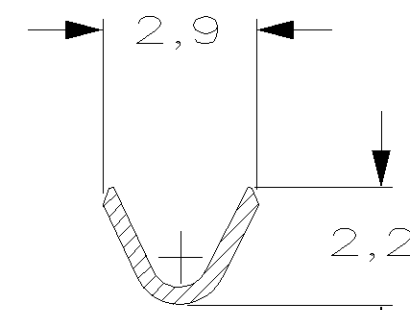
LOOSE-PIECE



COLOR CODE: YELLOW



SECTION A-A



SECTION B-B

WIRE RANGE : 0,20-0,50 mm? (24-20 AWG)
INSUL. RANGE : 1,1 -1,8 mm (.045-.070)

| | | | | | | | |
|------------|--------|----|------------|-------|-----------|-----|-----|
| 1-163085-4 | △1 | △A | 1-163086-1 | BRASS | EL.TIN | △31 | △20 |
| 1-163085-3 | | △A | 1-163086-3 | BRASS | BR. TIN | | △30 |
| 5-163085-3 | △5 | △C | | BRASS | ECON.GOLD | △21 | |
| 5-163085-2 | △1, △5 | △C | | BRASS | SEL.GOLD | △22 | |
| 5-163085-1 | △1, △5 | △C | | BRASS | EL.TIN | △20 | |
| 1-163085-2 | | △B | | BRASS | GOLD | △23 | |
| 1-163085-1 | | △A | | BRASS | ECON.GOLD | △21 | |
| 1-163085-0 | | △B | 1-163086-0 | BRASS | ECON.GOLD | △21 | |
| 163085-9 | | △A | | BRASS | EL.TIN | △20 | |
| 163085-8 | | △A | | BRASS | SEL.GOLD | △22 | |
| 163085-2 | △1 | △B | 163086-2 | BRASS | SEL.GOLD | △22 | |
| 163085-1 | △1 | △B | 163086-1 | BRASS | EL.TIN | △20 | |

| | |
|--------------------------------------|----|
| AMPOMATOR + MINI-APPL 107-3-FIG.1 | △A |
| 107-3-FIG.2 | △B |
| 107-3-FIG.4 | △C |

| NOTES | MATERIAL | THICKNESS | AREA |
|-------|-------------------------|--------------------|--------------------------------------|
| △20 | TIN | 2,0 μm | ALL OVER |
| △21 | NICKEL GOLD TIN | 0,8 μm | ALL OVER CONTACT AREA BARREL |
| △22 | NICKEL GOLD GOLD | 0,8 μm | ALL OVER CONTACT AREA ALL OVER |
| △23 | NICKEL GOLD GOLD | 1,2 μm | ALL OVER CONTACT AREA ALL OVER |
| △27 | NICKEL SILVER TIN | 2,5 μm | ALL OVER CONTACT AREA BARREL |
| △28 | SILVER | 0,5 μm | ALL OVER |
| △29 | SILVER | 2,5 μm | ALL OVER |
| △30 | NICKEL BRIGHT TIN | 1,27 μm 1,27 μm | ALL OVER ALL OVER |
| △31 | LUBRICATED | | |

| | | | | | |
|-------|-----------------|-------|------|-----------|---|
| AC | EBD0-0463-04 | RS | MG | 13/12/04 | |
| AB | EBD0-0335-04 | JMS | FWK | 02/08/04 | |
| V | EB00-0341-02 | PB | SS | 3 OCT 02 | |
| T1 | EH-1189-95 | D.K. | R.V. | 06 OCT 95 | |
| T | EH-0302-94 | JvL | MvD | 03-05-94 | |
| S | ECN H-9526 | MvD | RD | 06-02-92 | |
| R | ECN H-9192 | MvD | RD | 09-10-91 | |
| LTR. | REVISION RECORD | DR. | CHK. | DATE | |
| DR.: | - | CHK.: | - | APP.: | - |
| DATE: | - | DATE: | - | DATE: | - |

PARTNUMBER DIRECTION OF REEL LOOSE-PIECE MATERIAL PLATING

CUSTOMER DRAWING FOR REFERENCE ONLY
WILL NOT BE UPDATED

© COPYRIGHT 19 - BY AMP HOLLAND B.V.
ALL INTERNATIONAL RIGHTS RESERVED. AMP PRODUCTS MAY BE
COVERED BY U.S. AND FOREIGN AND/OR PATENTS PENDING.
THIS DRAWING IS UNPUBLISHED
RELEASED FOR PUBLICATION - ,19 -

AMP | AMP HOLLAND B.V.
's-Hertogenbosch,
The Netherlands.

NAME

TYPE_III_PIN_CONTACT
SIZE_16

DWG.No. 163085 REV.LTR. AC SHEET 1 OF 1 A3

NOTES :

- △1 U.L.RECONIZED UNDER FILE E28476 VOL.VI SEC.I
- 2 FOR CRIMPDETAILS SEE AMP-SPEC. 114-19.000 .
- 3 MEETS PRODUCTSPECIFICATION 108-10042.
- △4 0,40 MAX. GAP BETWEEN SPRING-NOSE AND CONTACT BODY.
- △5 SPECIAL REEL WITH 200 PCS FOR REEL-FED HAND-TOOL