

**MICRO SWITCH**  
 FREEPORT ILLINOIS U S A  
 A DIVISION OF HONEYWELL  
 FED MFG CODE 91829

**SWITCH-TOGGLE**

CATALOG LISTING  
**11TW47 SERIES**  
**CHART 1**

CATALOG LISTING

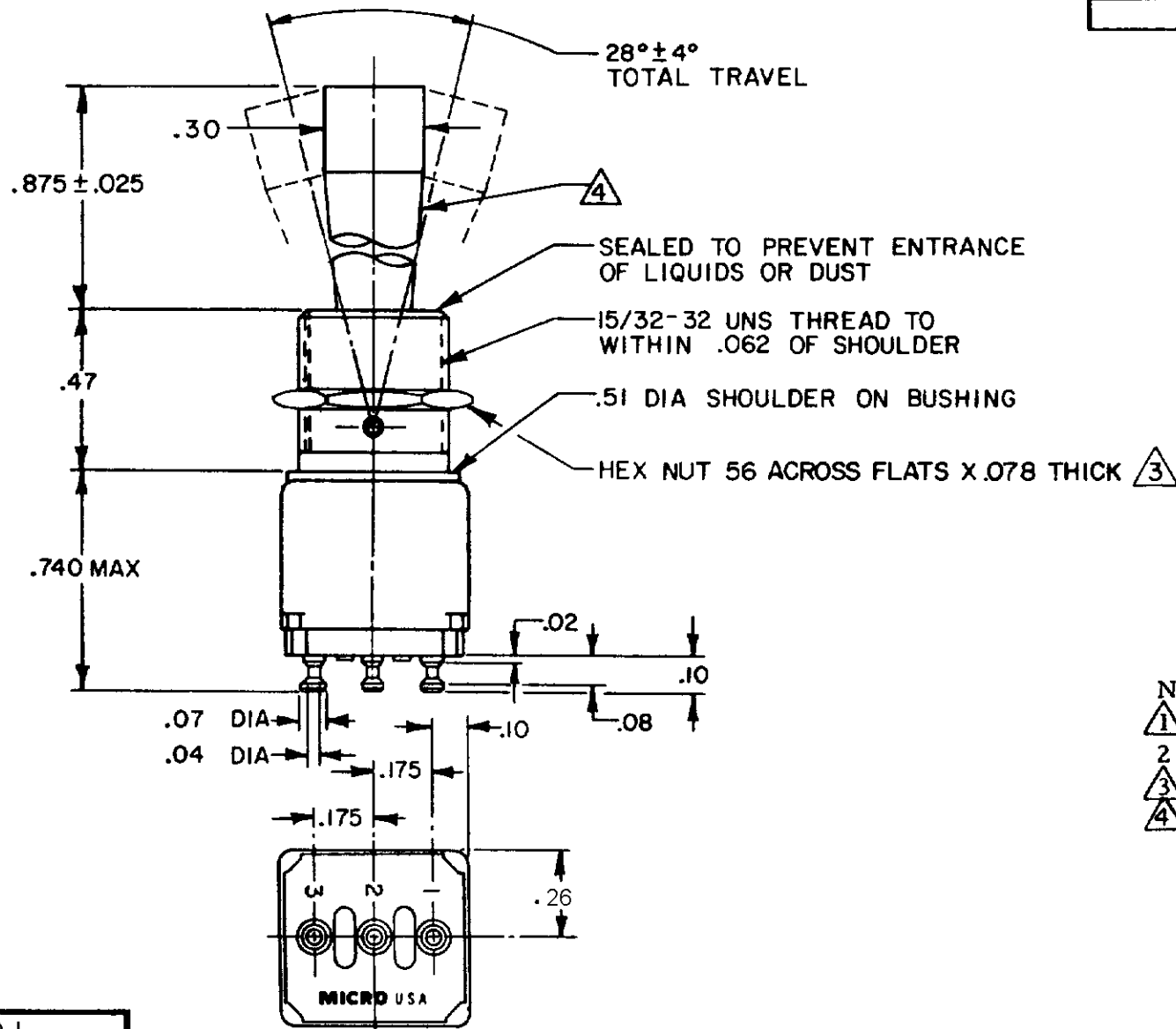
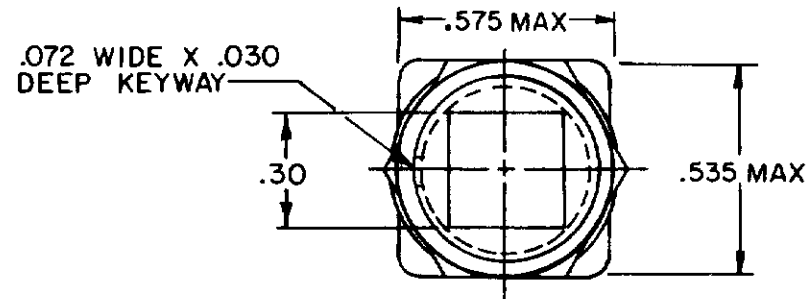
CIRCUIT MADE WITH TOGGLE LEVER IN  
 KEYWAY SIDE (1-2) CENTER (1-2) OPPOSITE KEYWAY (2-3)

ELECTRICAL RATING

THIS DRAWING COVERS A PROPRIETARY ITEM AND IS THE PROPERTY OF MICRO SWITCH. A DIVISION OF HONEYWELL THIS DRAWING IS NOT TO BE COPIED OR USED WITHOUT THE APPROVAL OF MICRO SWITCH.

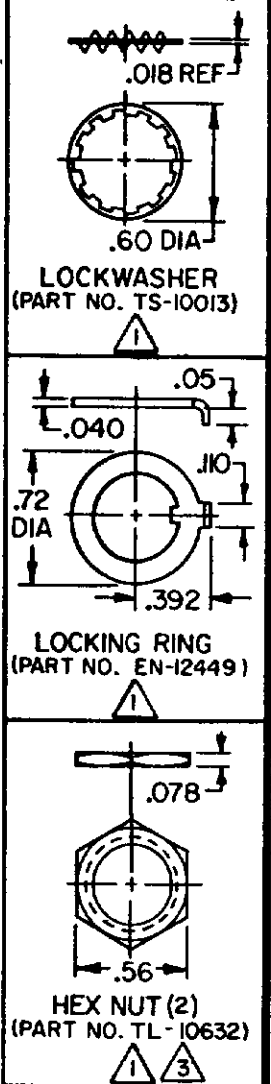
CATALOG LISTING	KEYWAY SIDE (1-2)	CENTER (1-2)	OPPOSITE KEYWAY (2-3)
11TW47-1	ON	OFF	ON
11TW47-2	OFF	NONE	ON
11TW47-3	ON	NONE	ON
11TW47-21	NONE	OFF	ON
11TW47-31	NONE	ON	ON
11TW47-4	MOM OFF	NONE	ON
11TW47-5	MOM ON	OFF	ON
11TW47-6	MOM ON	NONE	OFF
11TW47-7	MOM ON	OFF	MOM ON
11TW47-8	MOM ON	NONE	ON
11TW47-41	NONE	MOM OFF	ON
11TW47-51	NONE	ON	MOM ON
11TW47-61	MOM ON	OFF	NONE

-L 117- 5A-125 VAC



**NOTES**

- ① FURNISHED UNASSEMBLED
- ② - TERMINALS ARE PLATED FOR SOLDERING
- ③ MATTE FINISH
- ④ NON-GLOSSY LUSTERLESS WHITE



CATALOG LISTING 11TW47 SERIES CHART 1  
 PAGE 1 OF 1  
 ISSUE 2  
 REVISIONS  
 DRAWN L.J.F. 10 JUN 94  
 CHECK A.0016336  
 11TW47 SERIES  
 RELEASE NO CO-78465  
 REPLACES  
 BP  
 CHECK 25OCT05  
 VKR  
 CHECK  
 WEIGHT .020 LB MAX

SCALE 2 TO 1  
 DO NOT SCALE PRINT  
 UNLESS OTHERWISE NOTED  
 DIMENSIONS ARE IN INCHES  
**TOLERANCES ARE**  
 ONE PLACE ( ) ±.030  
 TWO PLACE (.00) ±.018  
 THREE PLACE (.000) ±.008  
 ANGLES  
 WEIGHT .020 LB MAX