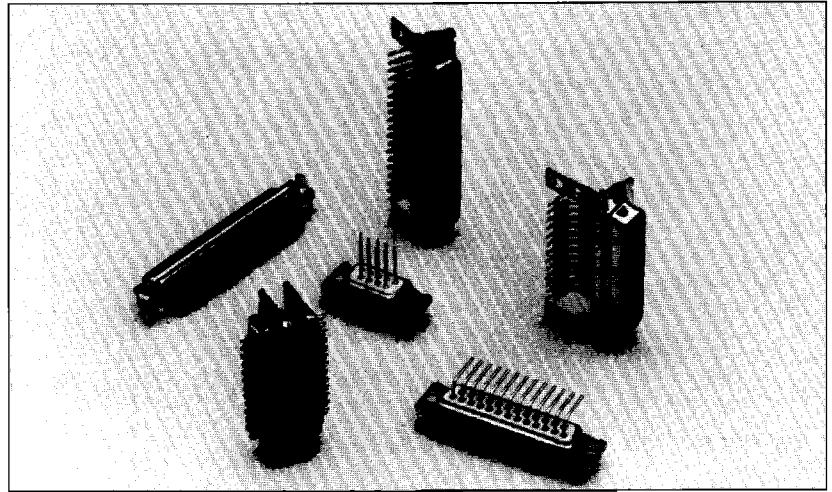


**AMPHENOL D-SUBMINIATURE  
FIXED MACHINED CONTACT INDUSTRIAL CONNECTOR**

**17D/117DF SERIES**

Amphenols 17D and 117DF series are a fixed contact heavier duty D-sub suitable for commercial or industrial use. The machined contacts provide stability and reliability.

Filter connectors available—  
contact factory.



**SPECIFICATIONS:**

**Temperature Range:**  
-55° C to +125° C

**Voltage Rating:**  
300 V RMS to 50Hz

**Current Rating:**  
7.5 Amp

**Cycles:**  
17D: 100 minimum  
117DF: 500 minimum

**Wire Size:**  
20 AWG

**Shells:**  
Steel/tin-plated, grounding indents on plug front shell or zinc/yellow chromate

**Dielectric:**  
Two-piece black thermoplastic UL 94 VO

**Dielectric Withstanding Voltage:**  
1000V RMS to 50Hz

**Contacts:**  
Male: screw machined brass  
Female: screw machined bronze

**Contact Plating:**  
Gold over Nickel

**Insertion Force:**  
4.3 oz. < F < 9.0 oz.  
per contact

**Contact Resistance:**  
< 5 milliohms

**Insulation Resistance:**  
> 5000 megaohms

**DIMENSIONS:**  
See page 47

**ORDERING INFORMATION:**

**17D - B - F - 25 - S - XXXX**

**Contact & Shell Plating Prefix**

Contact Plating	Shell Plating		
	Yellow Chromate	Tinned	Tinned & Indents
.000010" gold over nickel	17D	77D	717D
.000030" gold over nickel	117DF	177DF	777DF

\*plug only

**Code**

P	Pin
S	Socket

**Number of contacts**  
9, 15, 25, 37, 50

**Mounting Type**

Blank	.122 (3.1 ) dia. mounting holes
F	float bushings (front or rear mount)
G	M3 rear clinch nut
H	#4-40 rear clinch nut
K	.165 (4.2) dia. mounting holes

**Code**

Blank	solder cup
T	straight pc (see next page)
U	straight pc (see next page)
V	straight pc (see next page)
OL2	straight pc (see next page)
A	right angle pc (see next page)
C	right angle pc (see next page)
AJ3	right angle pc (see next page)
AJ4	right angle pc (see next page)
AM4	right angle pc (see next page)
AM4B	right angle pc (see next page)
1AON	right angle pc (see next page)
1AMN	right angle pc (see next page)
1APN	right angle pc (see next page)
1ATN	right angle pc (see next page)
1AUN	right angle pc (see next page)
F179	wire wrap (2 wrap)
F179A	wire wrap (3 wrap)

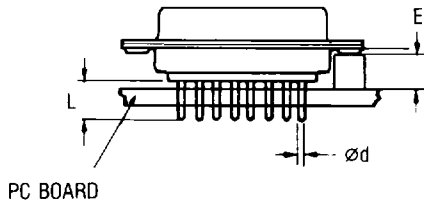
**Shell Size**

E (9)
A (15)
B (25)
C (37)
D (50)

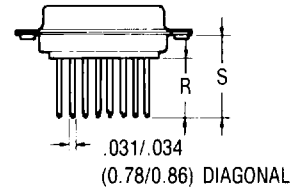
# AMPHENOL D-SUBMINIATURE FIXED MACHINED CONTACT INDUSTRIAL CONNECTOR

17D/17DF SERIES

## Printed Circuit Terminations



## Wire Wrap Terminations



Termination	Ø d	L	E
U	.024 (0.60)	.124 ( 3.2)	.185 (4.7)
V	.040 (1.02)	.093 (2.36)	.185 (4.7)
T	.024 (0.60)	.157 ( 4.0)	.185 (4.7)
OL2	.024 (0.60)	.217 ( 5.5)	.240 (6.1)

Termination Code	Number of Wraps	R	S
F179	2	.378 (9.6)	.591 (15)
F179A	3	.512 (13)	.709 (18)

## Right Angle Printed Circuit

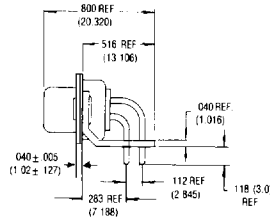
### TERMINATION

### CODE

### PC TAIL DIA. Inches (mm)

### DESCRIPTION OF MOUNTING OPTIONS

figure 1 .283 Footprint

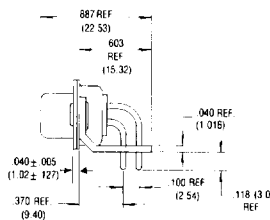


- A
- C
- AJ3
- AJ4
- AM4

- .040 (1.02)
- .040 (1.02)
- .040 (1.02)
- .024 (0.60)
- .024 (0.60)

- with metal bracket
- without bracket
- with plastic bracket
- with plastic bracket
- with metal bracket

figure 2 .370 Footprint

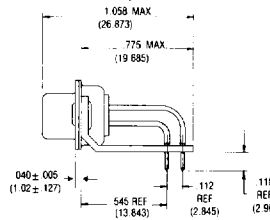


- 1AON
- 1AMN
- 1APN
- 1ATN
- 1AUN

- .024 (0.60)
- .024 (0.60)
- .024 (0.60)
- .024 (0.60)
- .024 (0.60)

- without bracket
- with riveted metal bracket
- with riveted plastic bracket
- with metal bracket and non-removable 4-40 front clinch nut
- with plastic bracket and non-removable 4-40 front clinch nut

figure 3 .545 Footprint

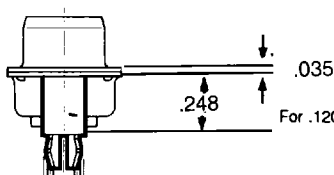


- AM4B

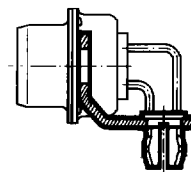
- .024 (0.60)

- with metal bracket

## Grounding Tab Options



For .120 (3,2 mm) Dia. Hole: Add Suffix "(RM5)" for Straight P.C. Mount  
For Tin-Plated Shells Only  
Must be ordered with "OL2" termination:  
77DXXXS-OL2 (RM5)  
717DXXXP-OL2 (RM5)



For .120 (3,2 mm) Dia. Hole:  
Add Suffix "(RM6)" for Right Angle P.C. Mount  
For Tin-Plated Shells & Metal Bracket Only  
77D or 717D Prefix