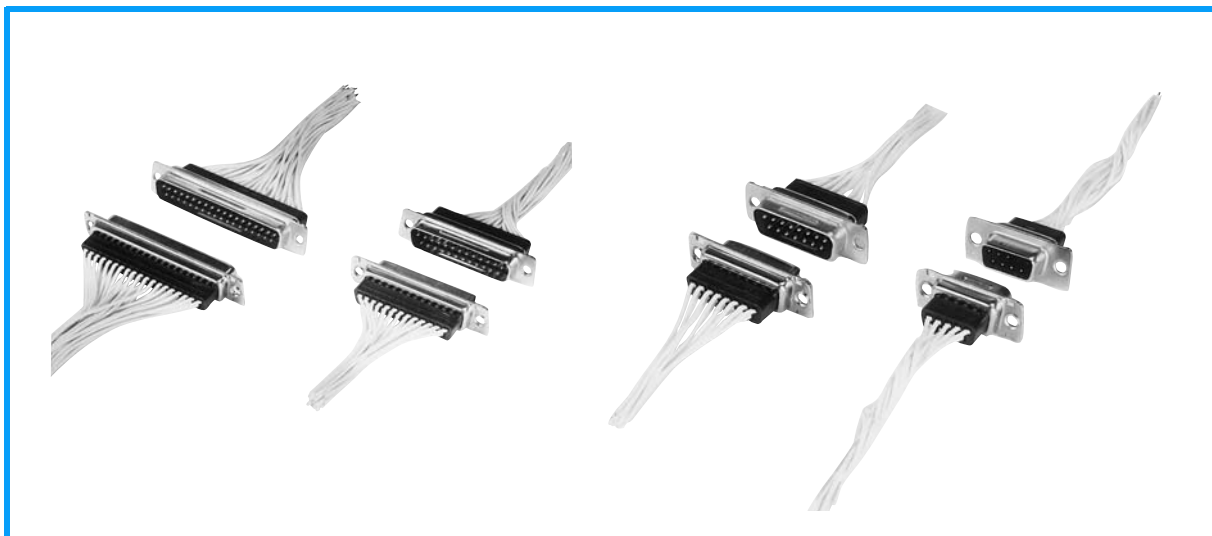


Crimp Type



FEATURE

- Connector for crimp-wiring equipped with crimp-type press-contacts (compatible with AWG 22 to 30)
- Number of contacts : 9, 15, 25 and 37
- Ni-plated metal shell surface; beat-process to plug-connector shell
- Connection of cable and plug can be shielded by a metalize-finished hood, improving resistance against EMI.

J

17DE

SPECIFICATION

| | |
|---------------------------------|--|
| Voltage Rating | 300V AC (r.m.s.) |
| Current Rating | 3A/Contact |
| Dielectric Withstanding Voltage | 1,000V AC (r.m.s.) for 1 minute |
| Insulation Resistance | 1,000M Ω min. at 500V DC |
| Contact Resistance | 20m Ω max. |
| Wire Accommodation | Stranded wire of AWG22, 24, 26, 28, 30 Outer diameter of insulator : ϕ 0.8 to ϕ 1.4 |
| Temperature | -25 $^{\circ}$ C to +85 $^{\circ}$ C |

MATERIAL/FINISH

| P/N | MATERIAL/FINISH |
|---------|---------------------------------------|
| Block | PBT resin/(UL94V-0) color black |
| Shell | Steel/Nickel Plating |
| Contact | Copper alloy/Gold over Nickel plating |
| Eyelet | Brass/Nickel Plating |

■ Crimp-Type Connector

17DE-13250-C

CONNECTOR STYLE

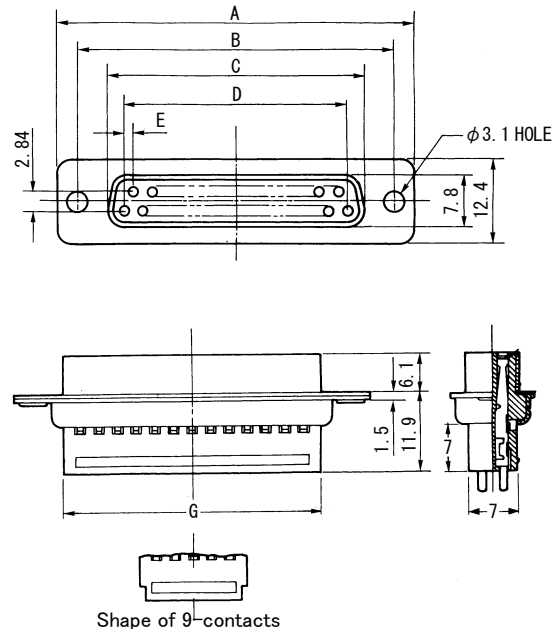
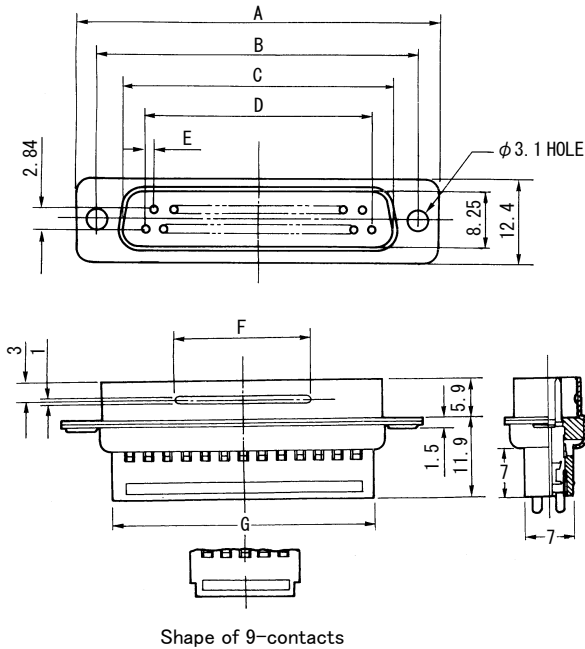
 13 : Socket connector
 23 : Pin connector

NO.OF.CONTACTS

09, 15, 25, 37

17DE-23□□0-C

17DE-13□□0-C



J
17DE

| No. of Contacts | P/N | A | B | C | D | E | F | G |
|-----------------|--------------|------|-------|-------|-------|--------|----|------|
| 9 | 17DE-23090-C | 30.7 | 24.99 | 16.80 | 10.98 | (1.37) | 8 | 16.0 |
| 15 | 17DE-23150-C | 39.0 | 33.32 | 25.12 | 19.20 | (1.37) | 12 | 24.4 |
| 25 | 17DE-23250-C | 52.9 | 47.04 | 38.84 | 33.12 | (1.38) | 20 | 38.1 |
| 37 | 17DE-23370-C | 69.2 | 63.50 | 55.30 | 49.68 | (1.38) | 20 | 54.5 |

| No. of Contacts | P/N | A | B | C | D | E | G |
|-----------------|--------------|------|-------|-------|-------|--------|------|
| 9 | 17DE-13090-C | 30.7 | 24.99 | 16.30 | 10.98 | (1.37) | 16.0 |
| 15 | 17DE-13150-C | 39.0 | 33.32 | 24.65 | 19.20 | (1.37) | 24.4 |
| 25 | 17DE-13250-C | 52.9 | 47.04 | 38.35 | 33.12 | (1.38) | 38.1 |
| 37 | 17DE-13370-C | 69.2 | 63.50 | 54.80 | 49.68 | (1.38) | 54.5 |

■ Crimp-Type Contact

17D-203PCR(R10000)

CONTACT PLATING

2 : Mating area : Gold ($0.4 \mu\text{m}$) over Nickel Plating
 Crimp area : Gold Flash over Nickel Plating
 3 : Gold Flash over Nickel Plating

APPLICABLE WIRE

03 : AWG26~30 (standard wire)
 Outer diameter of insulator : $\phi 0.8 \sim \phi 1.2$
 04 : AWG22~24 (standard wire)
 Outer diameter of insulator : $\phi 1.1 \sim \phi 1.4$

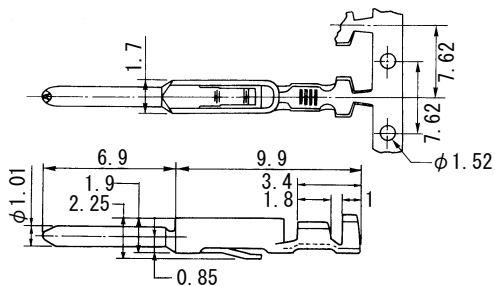
S : Socket contact
 P : Pin contact

No. OF CONTACTS

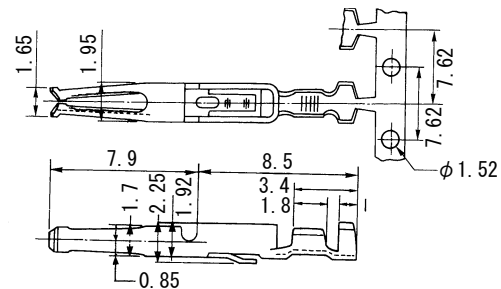
R10000 : Reel contacts, 10000/reel
 P500 : Bulk contacts, 500/pack

Rear-release type

● Pin contact



● Socket contact



J
17DE

| P/N | Surface finishing | |
|----------------|--|--------------------------------|
| | Connecting section | Wiring section |
| 17D-2□□PCR(□□) | Gold ($0.4 \mu\text{m}$) over Nickel Plating | Gold Flash over Nickel Plating |
| 17D-3□□PCR(□□) | Gold Flash over Nickel Plating | Gold Flash over Nickel Plating |

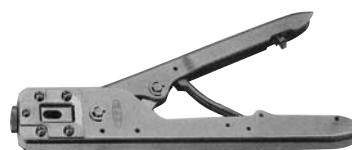
| P/N | Surface finishing | |
|----------------|--|--------------------------------|
| | Connecting section | Wiring section |
| 17D-2□□SCR(□□) | Gold ($0.4 \mu\text{m}$) over Nickel Plating | Gold Flash over Nickel Plating |
| 17D-3□□SCR(□□) | Gold Flash over Nickel Plating | Gold Flash over Nickel Plating |

Tools

● Manual wiring tool

P/N : 357J-10422 (For 17D-□□3□CR Contact type)

P/N : 357J-15475 (For 17D-□□4□CR Contact type)



● Tool for inserting/removing contact

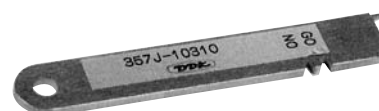
P/N : 357J-10309



● Tool for erecting contact ratch

Designation : 357J-10310

Used to erect ratch after removing contact inserted into insert-block by error.



● Semi-automatic crimping machine

Stripper crimper

Designation : AP-A10424 (including press unit)

Power supply : AC100V (0.2kW)

Weight : 88kg

Crimper

Designation : AP-A10423 (including press unit)

Power supply : AC100V

Weight : 45kg

