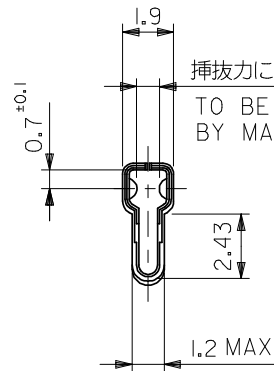
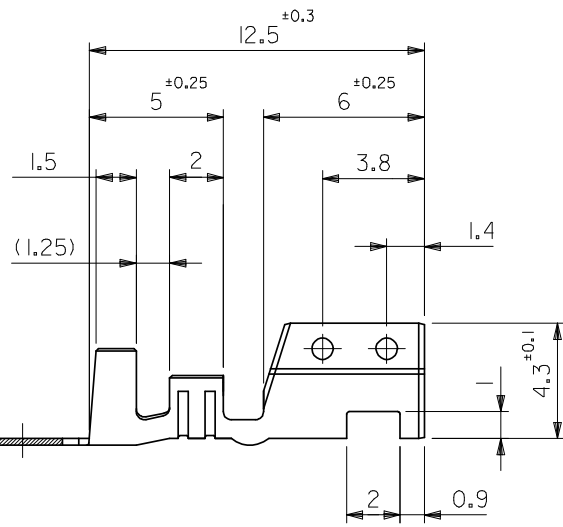


断面 A-A
SECT. A-A

断面 B-B
SECT. B-B



挿抜力により管理
TO BE CONTROLLED
BY MATING FORCE

注記
NOTES

1. 適合ハウジング : 5195-N* , 5196-N*
APPLICABLE HOUSING 5197-N* , 5198-N*
5199-N*

材料	表面処理	EDP NO.	ENG. NO.	端子形状
錫メッキ済リン青銅	Sn : 0.9 μ MIN	39-00-0022	5194PBT	バラ状 LOOSE
PRE-TINNED PHOSPHOR BRONZE		39-00-0021	5194PBT	連鎖状 CHAIN
錫メッキ済黄銅	Sn : 0.9 μ MIN, Cu : 0.5 μ MIN	08-70-1030	5194TL	バラ状 LOOSE
PRE-TINNED BRASS		08-70-1031	5194T	連鎖状 CHAIN
MATERIAL	FINISH	EDP NO.	ENG. NO.	端子形状 FORM

材料	表参照 SEE TABLE
MATERIAL	板厚: 0.254 (t=0.254)
仕上げ	表参照 SEE TABLE
FINISH	
適用電線範囲	AWG #18 - #24
WIRE RANGE	
被覆外径	ϕ 1.3 - ϕ 3.2
INS. RANGE	

REVISED EC NO: J2008-3351 DRWN:WABEI 2008/03/24 CHKD:THARUYAMA 2008/03/24 APPR:NUKITA 2008/03/24	GENERAL TOLERANCES (UNLESS SPECIFIED)	10 UNDER ± 0.2	10 OVER 30 UNDER ± 0.25	30 OVER ± 0.3	ANGULAR $\pm 3^\circ$	DRAFT WHERE APPLICABLE MUST REMAIN WITHIN DIMENSIONS
	DIMENSION STYLE	MM ONLY				
	DRAWN BY	DATE	TITLE			
	CHECKED BY	DATE	SPOX CRIMP RECEPTACLE			
	APPROVED BY	DATE	MOLEX MOLEX INCORPORATED			
DESCRIPTION	MATERIAL NO.		DOCUMENT NO.		SHEET NO.	
J	SEE TABLE		SD-5194-001		1 OF 1	

SCALE	DESIGN UNITS	THIRD ANGLE PROJECTION
5:1	METRIC	
DRAWN BY: K. HASHIMOTO DATE: '96/05/21		
CHECKED BY: S. KUNISHI DATE: '98/07/07		
APPROVED BY: M. FUKUSHIMA DATE: '98/07/07		
THIS DRAWING CONTAINS INFORMATION THAT IS PROPRIETARY TO MOLEX INCORPORATED AND SHOULD NOT BE USED WITHOUT WRITTEN PERMISSION		